

*Chanute is an exceptional community creating opportunities by investing in the future, while
building on our successes*

**CHANUTE CITY COMMISSION
REGULAR MEETING
MONDAY, NOVEMBER 24, 2025
6:30 P.M.**

AGENDA

- 1. Call To Order**
- 2. Pledge of Allegiance**
- 3. Invocation**
- 4. Approval of Agenda**
- 5. Consent Agenda**
 - Minutes – City Commission – November 10, 2025
 - Warrant Register dated November 10, 2025
 - Warrant Register dated November 19, 2025
 - A) Review Various Board and Committee Minutes and Reports
 - B) Main Street Chanute Request to Block Certain City Streets in Order to Hold 34th Annual Christmas Parade of Lights
- 6. Public Comments**
- 7. City Manager's Report**
- 8. New Business**
 - A) 2025 Budget Amendment – Publish Notice of Public Hearing
 - B) City Boundary Resolution
- 9. Commission Comments**
- 10. Adjournment**

**CHANUTE CITY COMMISSION
REGULAR MEETING
MONDAY, NOVEMBER 24, 2025**

CONSENT AGENDA – 5

The Consent Agenda is used by cities to approve non-controversial or routine matters by a single motion and vote of the City Commission. Examples of such items include approval of minutes, payment of claims, routine renewal of leases, routine resolutions, and certain staff reports. If any Commissioner wants to discuss any item on the Consent Agenda, that item is separated and considered at a later time on the agenda.

MINUTES

Minutes – City Commission – November 10, 2025

Warrant Register dated November 10, 2025

Warrant Register dated November 19, 2025

- A) **Review Various Board and Committee Minutes and Reports**
See attached information.

- B) **Main Street Chanute Request to Block Certain City Streets in Order to Hold 34th Annual Christmas Parade of Lights**
See attached information.

CALL TO ORDER – PLEDGE OF ALLEGIANCE

Mayor Jacob LaRue presided and called the meeting to order at 6:30 p.m., the Pledge of Allegiance was recited.

Commissioners Present: Mayor Jacob LaRue and Commissioners Kevin Berthot, Tim Egner, Tim Fairchild, and Larry Taylor.

Staff Present: Todd Newman, City Manager; Ryan Follmer, Assistant City Manager; Tina Bailey, City Clerk; David Brake, City Attorney; Cory Kepley, Chief Finance Officer; Chris Pefley, Police Chief; and Justin Franks, Sanitation Supervisor.

INVOCATION

The invocation was given by Commissioner Larry Taylor.

AGENDA

The Agenda was approved on motion by Commissioner Taylor, seconded by Commissioner Egner. Voting Aye: All. Motion carried unanimously.

CONSENT AGENDA

The Consent Agenda is used to approve non-controversial or routine matters by a single motion and vote. The Consent Agenda consisted of the following:

- Minutes – City Commission – October 27, 2025
- Warrant Register dated October 29, 2025
- Warrant Register dated November 5, 2025
- Review Various Board and Committee Minutes and Reports

Motion made by Commissioner Egner, seconded by Commissioner Berthot, to approve the consent agenda. Voting Aye: All. Motion carried unanimously.

RECOGNITION OF CITY'S 911 DISPATCH CENTER – 5 YEAR ANNIVERSARY

Jacob LaRue, Mayor of the City of Chanute, delivered a speech which recognized and celebrated the Chanute 911 Dispatch Center and the men and women that work at the center.

Chanute 911 Dispatch Center Executive Director Matthea Hendrickson presented years of service pins to the following Chanute 911 Dispatch Center employees:

5-Year Pin: Director Matthea Hendrickson, Chirstine Mendoza Tovar, Ashley Joyce, and Judy Greer.

20-Year Pin: Alicia Myers (20-year pin & 5-year pin) and Kim Wilson (25-year pin & 5-year pin).

Mayor LaRue thanked all our dispatches, past and present for their commitment and ensuring the community's safety.

PUBLIC COMMENTS

Doyle Angleton, 717 South Rutter commented on taxes, the 911 Dispatch Center, and the Solar Farm.

General discussion was made. Comments were made by City Manager Todd Newman and City Attorney David Brake.

Amy Jensen, Chanute Chamber of Commerce and Office of Tourism Executive Director distributed a copy of the 2026 Official Travel Guide for Kansas to the Commissioners. She reported that the guide feature's areas located in Southeast Kansas, including Chanute.

CITY MANAGER'S REPORT

City Manager Todd Newman gave his report on City activities and operations. Items reported on included an update on the Storm Drain Project located north of the Central Park Pavilion and also upcoming holiday hours for city office.

City Manager Newman provided a brief overview of the Chanute 911 Dispatch Center operations and budget.

General discussion was made. Comments were made by City Manager Newman and Police Chief Chris Pefley.

OLD BUSINESS

REINVESTMENT HOUSING INCENTIVE DISTRICT FOR CHANUTE HOUSING, LLC – REPEAL ORDINANCE NO. S-580

On August 25, 2025, after a public hearing, the Chanute City Commission passed Ordinance S-580 establishing a Reinvestment Housing Incentive District to support the construction of 32 new units of housing in the City of Chanute. On September 23, 2025, the Neosho County Commission passed a Resolution finding that the creation of a reinvestment housing district to support 32 units of new housing, along with a new Development Plan for the district, would have an adverse effect on Neosho County, Kansas.

Because of the action taken by the Neosho County Commission the Chanute City Commission is required pursuant to K.S.A. 19-101 et seq., to repeal Ordinance S-580.

General discussion was made. Comments were made by City Manager Todd Newman, City Attorney David Brake, and Chanute Housing, LLC representative Darrin Lueberring.

Motion made by Commissioner Taylor, seconded by Commissioner Egner, to pass AN ORDINANCE REPEALING CHANUTE ORDINANCE NO. S-580 ESTABLISHING A REINVESTMENT HOUSING INCENTIVE DISTRICT WITHIN THE CITY OF CHANUTE. Voting Aye: All. Motion carried unanimously.

The Ordinance was assigned: No. S-585

Commission consensus was for the City Manager to work with Chanute Housing, LLC staff and continue discussions to relocate their RHID project to the City's RHID property located in the Osa Martin Heights Subdivision.

NEW BUSINESS

REVISIONS TO GARBAGE AND TRASH ORDINANCES

City staff is presenting changes to the current Garbage and Trash Ordinances. Purchase of new trash trucks and carts have required City staff to make the proposed changes to curbside pickup.

General discussion was made. Comments were made by City Manager Todd Newman, Sanitation Supervisor Justin Franks, and Assistant City Manager Ryan Follmer.

Motion made by Commissioner Taylor, seconded by Commissioner Egner, to pass AN ORDINANCE AMENDING AND ADDING TO CHANUTE MUNICIPAL CODE SECTION 8.80 PERTAINING TO REFUSE AND TRASH COLLECTION BY THE CITY OF CHANUTE. Voting Aye: All. Motion carried unanimously.

The Ordinance was assigned: No. 2676

COMMISSION COMMENTS

Commissioner Taylor reported that he attended the SEK Inc. Housing Conference and provided a brief overview of the conference.

General discussion was made. Comments were made by City Manager Todd Newman.

Mayor LaRue requested that City staff research physical addresses for city parks and recreation areas that could assist out of town visitors when trying to map and locate a specific park or recreation area.

General discussion was made. Comments were made by City Manager Todd Newman and City Attorney David Brake.

ADJOURNMENT

Motion made by Commissioner Fairchild, seconded by Mayor LaRue, to adjourn. Voting Aye: All. Motion carried unanimously. Meeting adjourned at 7:40 p.m.

Tina L Bailey, CMC
City Clerk

**CHANUTE CITY COMMISSION
REGULAR MEETING
MONDAY, NOVEMBER 24, 2025**

CONSENT AGENDA ITEM – 5A

ITEM: Consent Agenda

SUBJECT: Review Various Board and Committee Minutes and Reports

<u>Boards and Committees</u>	<u>Meeting Date</u>	<u>Minutes/Reports</u>
Chanute Land Bank Board (Commissioners Berthot & Fairchild)		N/A
Chanute Main Street Board (Mayor or Appointee & Commissioner Egner)		N/A
CRDA Board of Directors (Commissioner Egner)		N/A
CRDA Executive Committee (Mayor or Appointee)		N/A
Economic Development Committee (Mayor & Commissioner Taylor)		N/A
Golf Course Advisory Committee (Commissioner Taylor)		N/A
Grow Neosho County (Mayor)		N/A
Housing Authority Board (Commissioner Fairchild)		N/A
Library Board (Mayor)		N/A
Parks Advisory Board (Commissioner Egner)		N/A
Planning Commission (Commissioner Egner)		N/A
Recreation Commission (Commissioner Berthot)		N/A
Tourism & Convention Committee (Commissioner Taylor)		N/A

RECOMMENDATION: Review various Board and Committee Minutes and Reports.

**CHANUTE CITY COMMISSION
REGULAR MEETING
MONDAY, NOVEMBER 24, 2025**

CONSENT AGENDA ITEM – 5B

ITEM: Consent Agenda

SUBJECT: Main Street Chanute Request to Block Certain City Streets in order to hold 34th Annual Christmas Parade of Lights

ANALYSIS: Attached is a letter from Ruthann Boatwright, Executive Director, Main Street Chanute, requesting permission to block Main Street from Katy Park to Forest in order to hold the 34th Annual Christmas Parade of Lights. The parade is scheduled Thursday, December 4, 2025 at 6:30 p.m.

Parade entries will line up at Katy Park and travel West on Main Street to Forest. Parade MC's will be stationed at the northwest corner of the center of the Google Earth mural announcing parade participants using outdoor audio system. In addition to temporarily blocking City streets the request also includes that the City street sweeper follow at the end of the parade to remove any horse droppings from Main Street.

FINANCIAL CONSIDERATION: None

LEGAL CONSIDERATION: None

CONSIDERATION: Approve Main Street Chanute request to block Main Street from Katy Park to Forest in order to hold 34th Annual Christmas Parade of Lights December 4, 2025 at 6:30 p.m. as presented.

110 E. Main, P. O. Box 22
Chanute, KS 66720



director@chanutemainstreet.com
620-431-0056

RECEIVED
NOV 17 2025

November 13, 2025

Dear Commissioners:

The 34th annual Christmas Parade of Lights, with a theme this year of "All I Want for Christmas" kicks off our Christmas season, and will be held Thursday, December 4th at 6:30 pm with floats and entrants lining up at Katy Park.

We, Main Street Chanute, Inc., would like to request that the streets be blocked off so that the parade can run West on Main Street starting at Katy Park and ending at Forest Street. We would also like to request the street sweeper follow at the end of the parade to remove any horse droppings from the parade route.

Our MC's will be stationed at the northwest corner of the Center of Google earth street mural using our Outdoor Audio System announcing the parade participants.

Thank you in advance for your help in making this day a wonderful event for the entire Chanute community.

Sincerely,

Ruthann Boatwright

Ruthann Boatwright
Executive Director
Main Street Chanute, Inc.

**CHANUTE CITY COMMISSION
REGULAR MEETING
MONDAY, NOVEMBER 24, 2025**

AGENDA ITEM – 8A

ITEM: New Business

SUBJECT: 2025 Budget Amendment – Publish Notice of Public Hearing

INITIATOR: Chief Finance Officer, Cory Kepley

BACKGROUND: It is customary for the City to amend its annual budget before the end of each fiscal year. As is typical, we have fund modifications that will require an amendment to be conducted. Budget Amendment – Pursuant to K.S.A. 79-2929, we are obligated to provide a 10-day notice, from date of publication, for purposes of conducting a budget hearing. This will allow year-end financial wrap up.

ANALYSIS: Various municipal activities will require the budget to be amended. Revenue and unencumbered cash will support the proposed modifications.

FINANCIAL CONSIDERATION: Increasing the limit on these funds pursuant to Kansas Statute. This action will allow the City to remain compliant with State of Kansas budgetary restrictions.

LEGAL CONSIDERATION: No issue of liability, unless the budget amendment cannot be conducted in accordance with statutory terms. Budget violations can impact bond rating and other terms associated with bond compliance. Comply with provisions relating to statutory budget law.

RECOMMENDATION: Take formal action in placing the budget hearing on the December 8, 2025 Agenda.

2025

**Notice of Budget Hearing for Amending the
2025 Budget**

The governing body of

City of Chanute

will meet on the day of 12/8/2025 at 6:30 PM at Chanute Commission Room, Municipal Building for the purpose of hearing and answering objections of taxpayers relating to the proposed amended use of funds.

Detailed budget information is available at City Clerks Office
and will be available at this hearing.

Summary of Amendments

Fund	2025 Adopted Budget			2025 Proposed Amended Expenditures
	Actual Tax Rate	Amount of Tax that was Levied	Expenditures	
City Roof Repair			0	193,572
Depot Building			80,000	1,850,000
Special Highway Improv.			600,250	700,250
City Infrastructure			0	217,231
Electric Utility			29,910,695	31,910,695
Gas Utility			7,254,409	8,254,409
Refuse Utility			1,706,539	1,781,539
Fiber Utility			1,615,845	2,156,736
Elec/Wtr/Gas Bond/Int.			1,018,600	1,701,833
			0	0

Jacob LaRue
Official Title: Mayor

2025 Amended Budget Notes

110-City Roof Repair– West Complex, Rec Commission Roof - \$193,572

219-Depot Building– HVAC Project - \$1,770,000

223-Special Highway- Osa Martin Option B - \$100,000

361-City Infrastructure – Osa Martin Option B - \$217,231

501-Electric Fund – Purchase Power - \$2,000,000

503-Gas Fund – Precautionary Prediction, colder temperatures in late months, make sure there is sufficient room for Gas Purchases. - \$1,000,000

504-Refuse Fund – Equipment Repair/Rental - \$75,000

506-Fiber Fund – Fiber Pon 13 - \$540,891

511-Ele/Wtr/Gas – 2024A and 2025A Bond Payments - \$683,233

2025

**Amended
Certificate
For Calendar Year 2025**

To the Clerk of Neosho, State of Kansas
We, the undersigned, duly elected, qualified, and acting officers of
City of Chanute
certify that: (1) the hearing mentioned in the attached publication was
held;(2) after the Budget Hearing this Budget was duly approved and
adopted as the maximum expenditure for the various funds for the year.

			2025 Amended Budget		
			Amount of 2024 Tax that was Levied	Adopted 2025 Expenditures	Proposed Amended 2025 Expenditures
Table of Contents:		Page No.			
Fund	K.S.A.				
City Roof Repair		2			193,572
Depot Building		3		80,000	1,850,000
Special Highway Improv.		4		600,250	700,250
City Infrastructure		5			217,231
Electric Utility		6		29,910,695	31,910,695
Gas Utility		7		7,254,409	8,254,409
Refuse Utility		8		1,706,539	1,781,539
Fiber Utility		9		1,615,845	2,156,736
Elec/Wtr/Gas Bond/Int.		10		1,018,600	1,701,833
Totals		XXXXXXXX	0	42,186,338	48,766,265
Summary of Amendments		11			

Attested date: _____

County Clerk

Assisted by: _____

Address: _____

Email: _____

Governing Body

CPA Summary

City of Chanute

2025

Adopted Budget

City Roof Repair	2025 Adopted Budget	2025 Proposed Budget
Unencumbered Cash Balance January 1	193,572	193,572
Receipts:		
Ad Valorem Tax		
Delinquent Tax		
Motor Vehicle Tax		
Recreational Vehicle Tax		
16/20M Vehicle Tax		
Interest on Idle Funds		
Total Receipts	0	0
Resources Available:	193,572	193,572
Expenditures:		
Contractual		193,572
Total Expenditures	0	193,572
Unencumbered Cash Balance December 31	193,572	0

CPA Summary

Depot Building	2025 Adopted Budget	2025 Proposed Budget
Unencumbered Cash Balance January 1	51,200	13,795
Receipts:		
Ad Valorem Tax		
Delinquent Tax		
Motor Vehicle Tax		
Recreational Vehicle Tax		
16/20M Vehicle Tax		
Taxes and Shared Receipts		
Rents and Royalties	38,400	38,400
Transfers		1,490,144
Contributions & Donations		311,198
Interest on Idle Funds		
Total Receipts	38,400	1,839,742
Resources Available:	89,600	1,853,537
Expenditures:		
Contracual Services	80,000	1,850,000
Total Expenditures	80,000	1,850,000
Unencumbered Cash Balance December 31	9,600	3,537

CPA Summary

City of Chanute

2025

Adopted Budget

Special Highway Improv.	2025 Adopted Budget	2025 Proposed Budget
Unencumbered Cash Balance January 1	205,818	642,062
Receipts:		
Ad Valorem Tax		
Delinquent Tax		
Motor Vehicle Tax		
Recreational Vehicle Tax		
16/20M Vehicle Tax		
State of Kansas Gas Tax	244,660	244,660
Reimbursements	150,000	110,822
Interest on Idle Funds		
Total Receipts	394,660	355,482
Resources Available:	600,478	997,544
Expenditures:		
General Government		
Personal Services	99,175	99,175
Contractual	8,000	8,000
Commodities	23,500	23,500
Capital Outlay	436,000	536,000
Debt Service		
Principal	31,283	31,283
Interest	2,292	2,292
Total Expenditures	600,250	700,250
Unencumbered Cash Balance December 31	228	297,294

CPA Summary

City of Chanute

2025

Adopted Budget

City Infrastructure	2025 Adopted Budget	2025 Proposed Budget
Unencumbered Cash Balance January 1	217,139	217,139
Receipts:		
Ad Valorem Tax		
Delinquent Tax		
Motor Vehicle Tax		
Recreational Vehicle Tax		
16/20M Vehicle Tax		
Reimbursements	0	92
Interest on Idle Funds		
Total Receipts	0	92
Resources Available:	217,139	217,231
Expenditures:		
Contractual	0	217,231
Total Expenditures	0	217,231
Unencumbered Cash Balance December 31	217,139	0

CPA Summary

City of Chanute

2025

Adopted Budget

Electric Utility	2025 Adopted Budget	2025 Proposed Budget
Unencumbered Cash Balance January 1	5,664,403	2,412,508
Receipts:		
Ad Valorem Tax		
Delinquent Tax		
Motor Vehicle Tax		
Recreational Vehicle Tax		
16/20M Vehicle Tax		
Taxes and Shared Receipts		
Electric Sales	26,990,000	28,000,000
Service Fees	560,000	740,000
Franchise Fees	335,000	335,000
Use of Money and Materials		
Sale of Property and Materials	5,000	5,000
Other Receipts		
Claims		
Recovery of Bad Debt	2,500	2,500
Miscellaneous	22,500	22,500
Refunds & Reimbursements	25,000	25,000
Security Deposit Returned		
Generation Reimbursement	2,000,000	2,000,000
Interest on Idle Funds		
Total Receipts	29,940,000	31,130,000
Resources Available:	35,604,403	33,542,508
Expenditures:		
Production		
Personal Services	1,842,258	1,842,258
Contractual Services	870,300	870,300
Commodities	13,785,500	15,785,500
Capital Outlay	110,000	110,000
Distribution		
Personal Services	1,685,334	1,685,334
Contractual Services	152,850	152,850
Commodities	780,750	780,750
Capital Outlay	575,000	575,000
Administration and General		
Personal Services	154,355	154,355
Contractual Services	2,036,707	2,036,707
Street and Special Lighting		
Contractual Services	110,000	110,000
Operating Transfers to:		
General Fund	4,250,000	4,250,000
Capital Improvement #1 Fund	200,000	200,000
Capital Improvement #2 Fund		
General Obligation Bond & Interest Fund	1,358,470	1,358,470
Equipment Reserve Fund	300,000	300,000
Electric, Water, & Gas Bond & Interest Fund	164,171	164,171
Ash Grove Franchise Fee to General Fund	335,000	335,000
Other Transfer	1,200,000	1,200,000
Total Expenditures	29,910,695	31,910,695
Unencumbered Cash Balance December 31	5,693,708	1,631,813

CPA Summary

City of Chanute

2025

Adopted Budget

Gas Utility	2025 Adopted Budget	2025 Proposed Budget
Unencumbered Cash Balance January 1	1,886,388	2,448,057
Receipts:		
Ad Valorem Tax		
Delinquent Tax		
Motor Vehicle Tax		
Recreational Vehicle Tax		
16/20M Vehicle Tax		
Gas Sales	7,241,500	7,241,500
Service Fees	2,000	2,000
Use of Money and Property		
Sale of Property and Materials	5,000	5,000
Other Receipts		
Claims		
Recovery of Bad Debts	500	500
Refunds		
Transfer From Electric		
Miscellaneous	1,500	1,500
Interest on Idle Funds	5,500	5,500
Total Receipts	7,256,000	7,256,000
Resources Available:	9,142,388	9,704,057
Expenditures:		
Gas Supply		
Transportation	1,000,000	1,000,000
Natural Gas	4,000,000	5,000,000
Distribution		
Personal Services	818,765	818,765
Contractual Services	141,350	141,350
Commodities	151,900	151,900
Capital Outlay	179,000	179,000
Administration and General		
Personal Services	122,196	122,196
Contractual Services	291,198	291,198
Operating Transfers to:		
General Fund	350,000	350,000
Capital Improvement #1 Fund	100,000	100,000
Capital Improvement #2 Fund		
General Obligation Bond & Interest Fund		
Equipment Reserve Fund	100,000	100,000
Total Expenditures	7,254,409	8,254,409
Unencumbered Cash Balance December 31	1,887,979	1,449,648

CPA Summary

City of Chanute

2025

Adopted Budget

Refuse Utility	2025 Adopted Budget	2025 Proposed Budget
Unencumbered Cash Balance January 1	822,001	1,074,417
Receipts:		
Ad Valorem Tax		
Delinquent Tax		
Motor Vehicle Tax		
Recreational Vehicle Tax		
16/20M Vehicle Tax		
Taxes and Shared Receipts		
Utility Collections	1,332,500	1,332,500
Landfill Fees	375,000	375,000
Use of Money and Property		
Sale of Property and Materials		
Other Receipts		
Recovery of Bad Debt	200	200
Refuse Licenses & Permits	1,000	1,000
Miscellaneous		
Interest on Idle Funds		
Total Receipts	1,708,700	1,708,700
Resources Available:	2,530,701	2,783,117
Expenditures:		
Collections		
Personal Services	377,717	377,717
Contractual Services	9,850	9,850
Commodities	27,450	27,450
Refuse Landfill		
Personal Services	318,478	318,478
Contractual Services	94,960	94,960
Commodities	164,950	239,950
Capital Outlay	9,000	9,000
Landfill Closing Reserve Fund	10,000	10,000
Administration and General		
Personal Services	137,693	137,693
Contractual Services	233,426	233,426
Commodities		
Operating Transfers To:		
General Fund	50,000	50,000
Capital Improvement #2 Fund		
General Obligation Bond & Interest Fund	33,015	33,015
Equipment Reserve Fund	20,000	20,000
Landfill Bond and Interest Fund		
Other Transfer	220,000	220,000
Total Expenditures	1,706,539	1,781,539
Unencumbered Cash Balance December 31	824,162	1,001,578

CPA Summary

City of Chanute

2025

Adopted Budget

Fiber Utility	2025 Adopted Budget	2025 Proposed Budget
Unencumbered Cash Balance January 1	203,867	724,266
Receipts:		
Ad Valorem Tax		
Delinquent Tax		
Motor Vehicle Tax		
Recreational Vehicle Tax		
16/20M Vehicle Tax		
Communications - Services		
Comm. Services	1,500	1,500
Fiber- Residential Sales	1,225,000	1,225,000
Fiber- Commercial Sales	370,000	370,000
Fiber- Industrial Sales	45,000	45,000
Reconnect Fee		
Reimbursements	2,000	2,000
Transfer		
Recovery of Bad Debt		
Sale of Property		
Interest on Idle Funds		
Total Receipts	1,643,500	1,643,500
Resources Available:	1,847,367	2,367,766
Expenditures:		
Personal Services	253,109	394,000
Contractual Services	447,700	847,700
Commodities	450,500	450,500
Capital Outlay	464,536	464,536
Debt Service		
Total Expenditures	1,615,845	2,156,736
Unencumbered Cash Balance December 31	231,522	211,030

CPA Summary

City of Chanute

2025

Adopted Budget

Elec/Wtr/Gas Bond/Int.	2025 Adopted Budget	2025 Proposed Budget
Unencumbered Cash Balance January 1	1,384,209	1,568,614
Receipts:		
Ad Valorem Tax		
Delinquent Tax		
Motor Vehicle Tax		
Recreational Vehicle Tax		
16/20M Vehicle Tax		
Taxes and Shared Receipts		
Electric Utility Fund	164,171	164,171
Water Utility Fund	587,078	587,078
Gas Utility Fund		
Refuse Utility Fund	33,015	33,015
Bonds Proceeds		
Interest on Idle Funds		
Total Receipts	784,264	784,264
Resources Available:	2,168,473	2,352,878
Expenditures:		
Debt Service		
Bond Pricipal	585,000	585,000
Bond Interest	183,600	866,833
Bond Issuance Cost	250,000	250,000
Total Expenditures	1,018,600	1,701,833
Unencumbered Cash Balance December 31	1,149,873	651,045

CPA Summary

City of Chanute

2025

Adopted Budget

	2025 Adopted Budget	2025 Proposed Budget
Unencumbered Cash Balance January 1		
Receipts:		
Ad Valorem Tax		
Delinquent Tax		
Motor Vehicle Tax		
Recreational Vehicle Tax		
16/20M Vehicle Tax		
Interest on Idle Funds		
Total Receipts	0	0
Resources Available:	0	0
Expenditures:		
Total Expenditures	0	0
Unencumbered Cash Balance December 31	0	0

Page No.

**CHANUTE CITY COMMISSION
REGULAR MEETING
MONDAY, NOVEMBER 24, 2025**

AGENDA ITEM – 8B

ITEM: New Business

SUBJECT: City Boundary

INITIATOR: City Manager

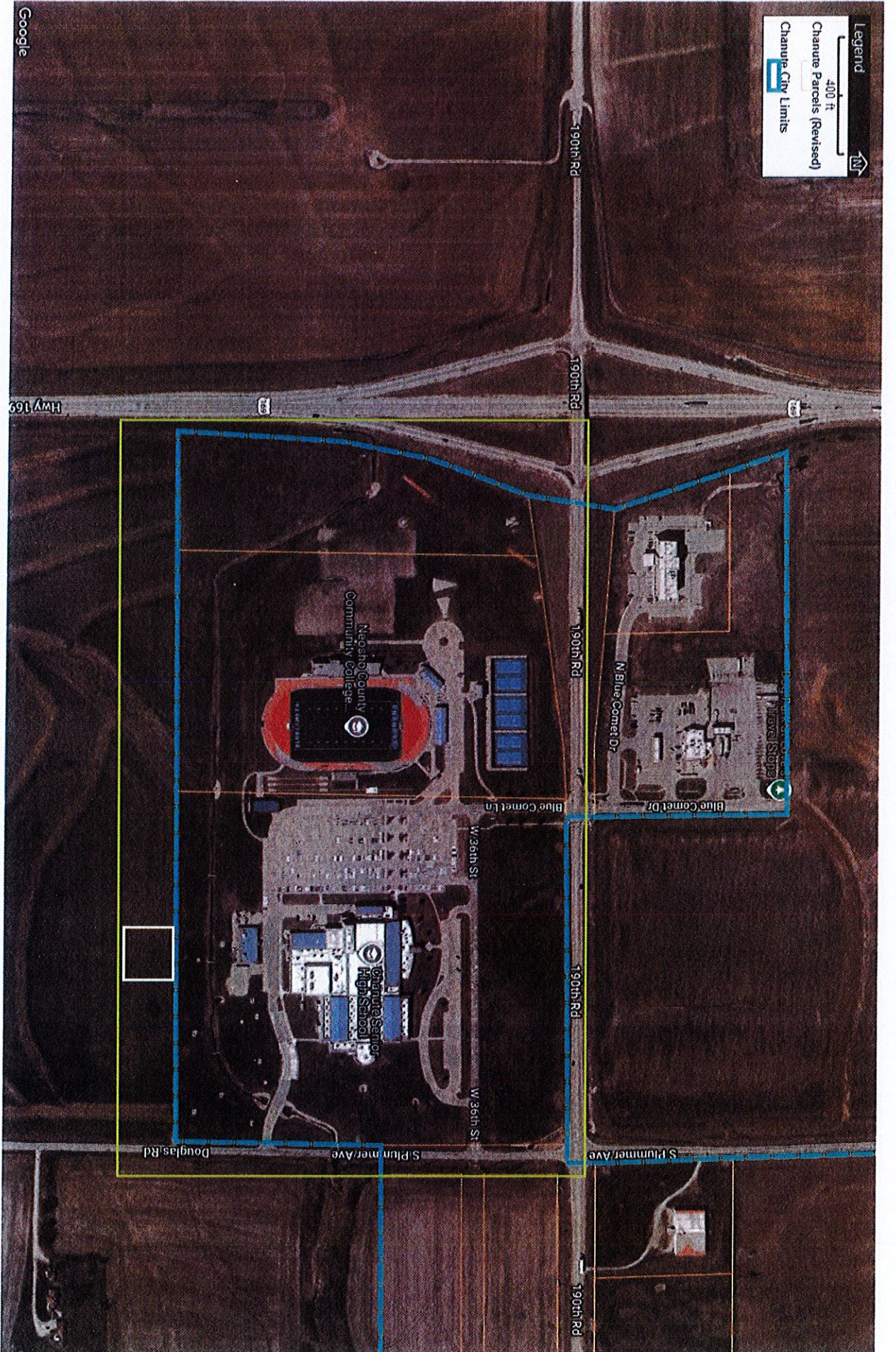
BACKGROUND: Annually, if there have been any changes in the City's boundaries, the City is required by State law to adopt a Resolution defining the revised boundaries.

ANALYSIS: The Resolution reflects the changes to the City's boundaries in 2025. K.S.A. 12-517 requires adopting and filing with the County Clerk, Register of Deeds, and the State Transportation Engineer of the State of Kansas. Map with annexations highlighted is attached.

FINANCIAL CONSIDERATION: None

LEGAL CONSIDERATION: Adopt Resolution.

RECOMMENDATION: Adopt Resolution.



RESOLUTION NO. _____

A RESOLUTION DECLARING BOUNDARIES OF THE CITY OF CHANUTE, KANSAS.

BE IT RESOLVED BY THE GOVERNING BODY OF THE CITY OF CHANUTE:

SECTION 1. Pursuant to K.S.A. 12-517, as amended Boundaries of the City of Chanute, Kansas, are hereby declared, to be as follows, as of November 24, 2025 to wit:

A. Commencing at the Northeast (NE) corner of the West Half (W/2) of the Southwest Quarter (SW/4) of Section Sixteen (16), Township Twenty-seven (27) South Range Eighteen (18) East of the Sixth Principal Meridian, Neosho county, Kansas; thence North thirty (30) feet to the North line of Ash Grove Road Extended:

B. Thence West and parallel to Ash Grove Road to the West right-of-way line of the North Santa Fe Road (North Santa Fe Avenue); thence South along the West line of North Santa Fe Road to the intersection of the center line of West Hickory Street and Twenty-five (25) feet North of the Northeast (NE) Corner of Block One (1), Grantwood Addition;

C. Thence West along said center line of West Hickory Street, Thence North Forty (40) feet to the Northeast Corner of Block 2, Rutter's Third Fairview Addition to the City of Chanute, Thence North three hundred (300) feet; thence west three hundred four (304) feet; thence South two hundred (200) feet; thence East one hundred fifty two (152) feet; thence South one hundred forty (140) feet; thence West along said centerline of West Hickory Street, to the point where such line intersects the center line of Kansas Avenue;

D. Thence North along the center line of Kansas Avenue to the Northeast (NE) corner of the Southwest Quarter (SW/4) of Section Seventeen (17), Township Twenty-seven (27) South, Range Eighteen (18) East, of the Sixth Principal Meridian, Neosho County, Kansas;

E. Thence East along the Half Section Line for a distance of eight hundred twenty-three and eight-tenths (823.8) feet +/-; thence South to a point on the South right-of-way line of Ash Grove Road,

said point being the Northwest Corner of Power Plant No. 2 property; thence South four hundred seventy-eight (478) feet; thence East three hundred ten (310) feet; to the West Right-of-Way line of North Garfield, thence East sixty (60) feet to the East Right-of-Way line of North Garfield thence South two hundred forty two (242) feet, thence East one hundred sixty (160) feet, thence North seven hundred sixty five (765) feet to the Northeast corner of the West half of the Southeast quarter of Section 17, T-27-S, R-1-18-E, thence Easterly along the Half Section Line to the Northeast corner of the Southeast Quarter (SE/4) Section Seventeen (17), Township Twenty-seven (27) South, Range Eighteen (18) East; thence North along the East Section Line of Section Seventeen (17), Township Twenty-seven (27) South; Range Eighteen (18) East to centerline of abandoned MKT Railroad right-of-way; thence Northwesterly along the centerline of Railroad right-of-way to a point which is two thousand four hundred seventy (2,470) feet North of the South line of said Northeast Quarter (NE/4) Section Seventeen (17); thence West to a point Two thousand ninety (2,090) feet West of the East line of said Northeast Quarter (NE/4) Section Seventeen (17); thence South Six hundred seventy (670) feet; thence West One thousand eight hundred seventy-three and ninety-one hundredths (1873.91) feet; thence South one thousand eight hundred (1800) feet to the Southeast (SE) Corner of the Southwest (SW/4) Quarter of the Northwest Quarter (NW/4) of Section Seventeen (17); thence West along the North Line of the Southwest Quarter (SW/4) to the Northwest (NW) Corner of said 1/4 section.

F. Thence South along the East line of Section Eighteen (18) to a point eight hundred, eighty-four and eight-tenths (884.8) feet North of the Southeast (SE) Corner of said Section Eighteen (18); thence North eighty-nine (89) degrees, eight (8) minutes West, thirteen hundred, forty-eight and six-tenths (1348.6) feet; thence South zero (0) degrees, forty (40) minutes West, eight hundred, eighty-seven and five-tenths (887.5) feet to the South line of said Section Eighteen (18); thence South eighty-nine (89) degrees, twenty-two (22) minutes East, nine hundred, twelve and sixty nine one-hundredths (912.69) feet to a point four hundred, thirty (430) feet Westerly of the Southeast Corner of said Section Eighteen (18);

G. Thence Southerly on a line four hundred, thirty (430) feet West of and parallel to the East line of Section Nineteen (19) to a point six hundred, twelve and fifty-four one-hundredths (612.54) feet South and four hundred thirty (430) feet West of the Northeast (NE) Corner of Section Nineteen (19), Township Twenty-seven (27) South, Range Eighteen (18) East of the Sixth Principal Meridian, Neosho County, Kansas,

H. Thence West one hundred thirty six and five tenths (136.5) feet, thence South two hundred seventy five (275) feet, thence East three hundred forty eight and five tenths (348.5), thence South eight hundred thirty five (835), thence West four hundred forty two (442), thence South one hundred ninety eight (198) feet, to a line which is 660' North of the South line of the Northeast Quarter (NE/4) of Section Nineteen (19);

I. Thence West parallel to the South line of the Northeast

Quarter (NE/4), Section Nineteen (19), Township Twenty-seven (27) south, Range Eighteen (18) East, to the West line of the East Half (E/2) of said Northeast quarter (NE/4); thence south twenty-two (22) feet; thence West two hundred, thirty-one (231) feet; thence South three hundred, eight (308) feet; thence West ninety-nine (99) feet; thence South to a point thirty-five (35) feet North of the South line of said Northeast (NE) Quarter; thence West parallel to and thirty-five (35) feet North of the South line of said Quarter, six hundred, sixty (660) feet; thence South thirty-five (35) feet to a point three hundred, thirty (330) feet East of the Northwest (NW) Corner of the Southeast Quarter (SE/4) of said Section Nineteen (19);

J. Thence South six hundred, sixty (660) feet; thence east three hundred (300) feet to a point on the West right-of-way line on Ronda Lane; thence South three hundred, thirty-two (332) feet along said right-of-way line to a point 15' North of South right-of-way of West Second Street thence West 300' thence; South 330' feet;

K. Thence South-westerly eighty-eight (88) degrees, thirty-seven (37) minutes and thirty (30) seconds West, to the Southeast corner of Lot 48, Sunset Addition; thence North zero (0) degrees, thirty-nine (39) minutes West, six-hundred, fifty-seven (657) feet; thence East two hundred, eighty(280)feet; thence North two hundred, seventy (270)feet, West two hundred, eighty five (285) feet; thence South two hundred, seventy (270) feet, South eighty-eight (88) degrees, thirty-seven (37) minutes and thirty (30) seconds West, nine hundred ninety (990) feet, thence North three hundred sixty (360) feet, thence West two hundred fifty (250) feet, thence North three hundred (300) feet, thence West one hundred, twenty eight (128) feet, South one hundred, fifty (150)feet; thence West one hundred, fifty (150)feet; thence South five hundred, ten(510) feet.

L. Thence South eighty-eight (88) degrees, thirty-seven (37) minutes, thirty (30) seconds West, one hundred and seventy three and eight tenths (173.8) feet; thence North three hundred thirty (330) feet; thence West to the West line of said Section Nineteen

(19); thence North three hundred twenty-nine and five tenths (329.5) feet to the Northeast Corner of the Southeast Quarter (SE/4) of Section Twenty-four (24); thence West 169 feet; thence North two hundred forty-four (244.0) feet; thence East one hundred forty-four (144.0) feet; thence North eighty-six (86.0) feet to a point, said point being three hundred thirty (330.0) feet North and twenty-five (25.0) feet West of the Northeast (NE) Corner of the Southeast quarter (SE/4), Section twenty-four (24); thence West one thousand two hundred ninety-five (1,295.0) feet; thence South three hundred thirty (330.0) feet; thence East one hundred sixty-three and six tenths (163.6) feet; thence South one hundred sixty-four and five tenths (164.5) feet; thence West four hundred forty-six (446.0) feet; thence South twenty-one (21) degrees, fifty-four (54) minutes, thirty (30) seconds West, six hundred eighty-nine (689.0) feet; thence South three hundred twenty and five tenths (320.5) feet; thence South forty-seven (47) degrees, thirty-eight (38) minutes West, a distance of one hundred forty-five (145.0) feet; thence West fifteen (15.0) feet; thence South four (4) degrees, fifty-six (56) minutes, fifteen (15) seconds, West, for a distance of eighty (80.0) feet; thence South twenty-nine (29) degrees, twenty-eight (28) minutes West, for a distance of one hundred five and six tenths (105.6) feet; thence South fifty-nine (59) degrees, thirty-six (36) minutes West, for a distance of one hundred four and five tenths (104.5) feet; thence South parallel to the Quarter Section Line one thousand, one hundred fifty-two (1,152.0) feet; thence East on the South Section Line two thousand one hundred seventy-two and two tenths (2,172.2) feet to the Southwest Corner of Section Nineteen (19); thence South along the West line of Section thirty (30) to the North right-of-way line of the Atchison, Topeka and Santa Fe Railway Company; thence Northeasterly along the North line of said railway right-of-way to the East line of the West Half of the Southwest Quarter (W/2 of SW/4) of said Section Thirty (30); thence North along the East line of said West Half of the Southwest Quarter (W/2 of SW/4) to a point one thousand (1000) feet South of the Northwest (NW) Corner of said East half of the Southwest Quarter (E/2 of SW/4); thence East parallel to the North line of the East Half of the Southwest Quarter (E/2 of SW/4), a distance of one thousand (1000) feet; thence North parallel to the West line of the East Half of the Southwest Quarter (E/2 SW/4), one thousand (1000) feet to the North line of the South Half of said Section Thirty (30); thence East one thousand, five hundred, ninety-nine and five-tenths (1599.5) feet more or less to the Southwest (SW) Corner of the Southeast Quarter (SE 1/4) of the Northeast Quarter (NE/4) of said Section Thirty (30); thence South 577.5' along the West line of the vacated street as originally platted lying West of lots 1,3,4,5,6 and 7, Block 1, Glover's Suburbans, a sub-division;

thence East One thousand, one hundred thirty eight and thirteen hundredths (1,138.13) feet; thence South 87'; thence East 41'; thence South 28'; thence East 139' to the center line of Plummer Avenue; thence North along said center line 32'; thence East 675'; thence North 158.54'; thence West 464.98'; thence North 92.92'; thence West 210.12' to the center line of Plummer Avenue; thence North along said center line to the South line (extended) of the North Half (N/2) of the North Half (N/2) of the Northwest Quarter (NW/4) of the Southwest Quarter (SW/4), Section Twenty-nine (29), Township Twenty-seven (27) South, Range Eighteen (18) East; thence Easterly along said South line just mentioned to the Westerly line of Sunnyside Addition.

M. Thence South along the West side of Lots Seven (7), Block Two (2) and Lot D of Sunnyside Addition to the Southwest (SW) Corner of Lot D; thence Northeasterly along the North right-of-way line along the Atchison, Topeka, and Santa Fe Railway Company, also being the Southeasterly side of Lots D, C, B, & A to the Southeast (SE) Corner of Lot A of Sunnyside Addition; also being a point on the West line of the Southeast Quarter (SE/4) of said Section Twenty-nine (29); thence South to a point said point being the North line of the South Half of the Southeast Quarter of the Southwest Quarter; Thence West Eight hundred, eighty nine and two hundredths (889.02) feet +/-; Thence South Six hundred, thirty seven and seventy one hundredths (637.71) feet +/-; Thence East Eight hundred, ninety one and three hundredths (891.03) feet +/- to a point, said point being twenty five (25) North of the Southeast Corner of the Southwest Quarter of Section 29, T-27-S, R-18-E; Thence South fifty (50) to a point which is twenty five (25) feet, South of the Northeast Corner of the Northwest Quarter, Section 32, T-27-S, R-18-E.

N. Thence West two-hundred-fifty (250) feet, thence South two-hundred-fifty (250) feet, thence East two-hundred-fifty (250) feet, to the West line of the East Half (E/2) of Section Thirty-two (32), Township Twenty-seven (27) south, Range Eighteen (18) East;

O. Thence South along the West line of the East Half (E/2) of Section Thirty-two (32), Township Twenty-seven (27) South, Range Eighteen (18) East of the Sixth Principal Meridian, Neosho county, Kansas, to the Easterly right-of-way of the Atchison, Topeka and Santa Fe Railway Company; thence Southwesterly along East side of said right-of-way line to a point, said point being Seven hundred, twenty (720) feet North of and parallel to the South line of Section 32, T-27-S, R-18-E; Thence West One thousand, two hundred forty five and forty three hundredths (1245.43) feet to a point, said point being seven hundred twenty (720) feet North of the Southwest

Corner of the East half of the Southwest Quarter of Section 32, T-27-S, R-18-E; Thence North Six hundred (600) feet, thence West One thousand, three hundred twenty (1320) feet to the West line of Section 32. T-27-S, R-18-E thence South on said line One thousand, three hundred twenty (1320) feet, to the Southwest Corner of Section 32, T-27-S, R-18-E; Thence South on the east line of Section 6, Sixty (60) feet; Thence West One thousand, ninety three and eight hundredths (1,093.08) feet parallel with the North line of the Northeast Quarter of Section 6, T-28-S, R-18-E on an assumed bearing of South(90)degrees 00 minutes 00 seconds West; Thence North(84) degrees 17 minutes 22 seconds West for a distance of One hundred and fifty hundredths(100.50) feet; Thence South 90 degrees 00 Minutes 00 Seconds West for a distance of Two hundred (200.00) feet; Thence South 83 degrees 34 minutes 52 seconds West for a distance of Eight hundred, five and five hundredths (805.05) feet; Thence South 24 degrees 16 minutes 43 seconds West for a distance of Three hundred, fifty one and fifty five hundredths(351.55) feet; Thence South 11 degrees 52 minutes 38 seconds West for a distance of 305.94'; Thence South 04 degrees 22 minutes 53 seconds West for a distance of 599.73' to a point on the south line of the North Half of the Northeast Quarter of said Section 6, T-28-S, R-18-E; Thence on an assumed bearing of North 89 degrees 57 minutes 39 seconds East along said south line for a distance of 1639.43 feet, more or less; thence South 01 degrees 05 minutes 08 seconds West a distance of 150.00 feet; thence North 89 degrees 57 minutes 39 seconds East a distance of 150.00 feet; thence North 01 degrees 05 minutes 08 seconds East a distance of 150.00 feet to a point on said South line; thence North 89 degrees 57 minutes 39 seconds East a distance of 592.00 feet to the Southeast corner of said North Half of the Northeast Quarter said section 6, said point being 1381.49 feet south of the Northeast corner of said section 6; Thence on an assumed bearing of North 01 degrees 05 minutes 08 seconds East to a point which is 660 feet South of the Northeast Corner of the Northeast Quarter of Section 6, T-28-S, R-18-E; Thence in a Easterly direction and parallel to the North line of the Northwest Quarter of Section 5, T-28-S, R-18-E, to a point of intersection with the East right-of-way line of the SKO Railroad, said point is also 660' South of the North line of section 5, T-28-S, R-18-E; Thence Southwesterly along East side of said right-of-way line to a point, said point being 454' North of the South line of the Northwest Quarter of Section 5, T-28, R-18. Thence West approximately 1,939.42 +/- to the East right-of-way line of Plummer Street. Thence South along the East right-of-way of Plummer Street for a distance of approximately 1344.83' thence East approximately 1,522.95' to the East right-of-way line of the S.K.O. Railroad. Thence left through a deflection angle of ninety degrees (90), thirty-seven minutes (37), and forty-five seconds (45), a distance

of one thousand, one hundred, twenty-six and four-tenths (1126.4) feet; to the West line of the Southeast (SE) corner of the Southeast quarter (SE/4) of Section 5, Township Twenty-eight (28) South, Range Eighteen (18) East; thence South along West line of Southeast (SE) corner of the Southeast quarter (SE/4) to a point twenty (20) feet North of the Southwest (SW) corner of the Southeast quarter (SE/4); thence Easterly along a line twenty (20) feet North of South line of said quarter a distance of one thousand four hundred twenty five and thirty eight hundredths (1425.38) feet; thence North at a left deflection angle of eighty eight (88) degrees, fifty eight (58) minutes, twenty (20) seconds a distance of six hundred fifty (650) feet; thence Easterly at a right deflection angle of ninety one (91) degrees, nine (9) minutes, forty (40) seconds, a distance of 1169.15' to a point. Said point being 670' North and 50' West of the Southeast corner of the Southeast Quarter, of Section 5, T-28-, R-18. Thence North 350', thence East 50' to the East Section Line of said Section five (5); thence North along said Section Line, nine hundred, eleven and seven-tenths (911.7) feet, thence West three hundred, twenty-seven (327) feet to the Southeast (SE) Corner of Lot 5, Safari Industrial Park II; thence North along the East Lot Line for two hundred, fifty (250) feet; thence East seven (7) feet; thence North along said East Lot Line a distance of five hundred, ninety-seven (597.0) feet to the Northeast (NE) Corner of Lot 5; thence West along the North Lot Lines of Lots 4 and 5, Safari Industrial Park II, to the Southeast (SE) Corner of Lot 10, Safari Industrial Park; thence North zero (0) degrees East along the East line of the West Half (W/2) of the Northeast Quarter (NE/4), one thousand, three hundred, fifty-seven and sixty-two hundredths feet (1357.62) to the Southwest (SW) Corner of the Northeast Quarter (NE/4) of the Northeast Quarter (NE/4) of Section Five (5); thence North eighty-nine (89) degrees, twenty-six (26) minutes, zero (0) seconds, east one thousand, three hundred, thirteen and seventy hundredths (1313.70) feet to the East line of said Section 5; thence North zero (0) degrees six (6) minutes, zero (0) seconds east, Twenty-five and Forty-nine hundredth (25.49) feet; thence East parallel to the North Section Line Two hundred eighty (280) feet; thence North parallel to Section Line One hundred seventy-two (172) feet; thence East One thousand thirty-nine and seventy-one hundredths (1039.71) feet to the Quarter Section Line of Section Four (4), Township Twenty-eight (28) South, Range Eighteen (18) East;

P. Thence North along Quarter Section Line One thousand one hundred fifty-five (1155) feet to the Northeast (NE) Corner of the Northwest Quarter (NW/4); Northwest Quarter (NW/4); thence West along North said Section Line Eight hundred forty and ninety-six hundredths (840.96) feet; thence South Four hundred ninety-eight

and fifty hundredth (498.50) feet; thence West Four hundred seventy-four and eighty-three hundredths (474.83) feet; thence North along said Section Line two hundred seventy (270.0) feet; thence East two hundred seventy-three and eighty-six hundredths (273.86) feet; thence North two hundred twenty-nine and thirteen hundredths (229.13) feet; thence East along the South Line of Section Thirty-three (33) a distance of one thousand forty-four and eleven hundredths (1,044.11) feet to a point thirty (30) feet South of the Southeast (SE) Corner of Lot Ten (10), Block Two (2) of the Earl Heminger Tract; said point being the Southwest (SW) corner of the Southeast Quarter (SE/4) of the Southwest Quarter (SW/4) Section Thirty-three (33), Township Twenty-seven (27) South, Range Eighteen (18) East; thence North along Quarter Section Line to the Northeast (NE) Corner of the South Half of the Northwest Quarter of the Southwest Quarter of Section 33, Township 27 South, Range 18 East; thence West along the North line of said South Half of the Northwest Quarter of the Southwest Quarter (S/2 of NW/4 of SW/4) to a point seven hundred eighty-five (785) feet East of the West Section Line of Section Thirty-three (33), Township Twenty-seven (27) South, Range Eighteen (18) East; thence North parallel with the West Section Line, three hundred, seventeen and seventy six hundredths (317.76) feet; thence East Five hundred thirty-five (535) feet; thence North Three hundred thirty (330) feet to the Half Section Line of Section Thirty-three (33), Township Twenty-seven (27) South, Range Eighteen (18) East; thence West Three hundred sixty-six and ninety-nine hundredths (366.99) feet; thence North Nine Hundred seventy-nine and twenty -five hundredths (979.25) feet; thence West approximately three hundred and twenty (320) feet; thence north parallel to the west line of Section 33 two hundred and twenty (220) feet to a point that is 1371.2 feet south and 633 feet East of the Northwest corner of Section 33, T-27-S, R-18-E; thence east forty three and two tenths (43.2) feet; thence north four hundred three and fifty seven hundredths (403.57) feet.

Q: Thence northeasterly 884.07', thence southeasterly and parallel to the old, abandoned Railroad Right-of-Way 1345' to a point on the east line of the Northwest Quarter of Section 33, Township 27 South, Range 18 East, thence south along said east line 1460.02', thence Easterly 2600' into the Northeast Quarter of Section 33, T-27, R-18,

thence North 1,020' to a point. Said point being 1,645' South, and 30' West of the Northeast Corner of the Northeast Quarter of Section 33, T-27, R-18. Thence West a distance of 1,105.82', thence Southwesterly 50', thence Northwesterly 961.86', thence Southwesterly a distance of 100', thence Northwesterly a distance

of 627.99' to the Quarter Section line. Thence North along the Section line to the Southeast corner of the South West Quarter, of Section 28. Township 27 South, Range 18 East.

R. Thence East to the Southeast (SE) corner of the Memorial Park Cemetery;

S. Thence North to the North line of Fourteenth Street; thence East three hundred, three and forty-seven hundredths (303.47) feet; thence North Two (2) degrees, fifty-eight (58) minutes West a distance of seven hundred, eighty-five (785.0) feet; thence South eighty-seven (87) degrees, zero (0) minutes West, four hundred, sixty-seven and seventy-six hundredths (467.76) feet; thence North six hundred thirty-nine (639.0) feet; thence North eighty-eight (88) degrees, twenty-nine (29) minutes East, eight hundred, seventy-seven and five-tenths (877.5) feet to the Southeast (SE) Corner of the Northwest Quarter (NW/4) of the Northeast Quarter (NE/4); thence North one hundred, seventy-two (172.0) feet to the Westerly right-of-way line of the Missouri, Kansas, and Texas Railroad; thence North twenty-two (22) degrees, sixteen (16) minutes, thirty (30) seconds West, five hundred ninety-one and seven tenths (591.7) feet; thence South eighty-six degrees, fifty-three (53) minutes West, nine hundred, fifty-three and one tenth (953.1) feet; thence North one hundred sixty-two and eight-tenths (162.8) feet; thence West one hundred, fifty (150.0) feet to the West line of said Northeast Quarter (NE 1/4) of Section Twenty-eight (28); thence North one hundred, thirty and eight-tenth (130.8) feet; thence East seventy (70.0) feet; thence North one hundred, forty-two (142.0) feet to the North Section Line of Section Twenty-eight (28), Township Twenty-seven (27) South, Range Eighteen(18) East, thence East Fifty-four (54) feet; thence North and parallel to the West line of the Southeast Quarter Section Twenty-one (21), Township Twenty-seven (27), South, Range Eighteen (18), East One hundred sixteen (116) feet; thence West and parallel to the South line of said quarter section one hundred twenty-four (124) feet; thence North along the West line of the Southeast Quarter (SE/4) of Section Twenty-one (21) to a point thirty-five (35) feet North of the North line of Sixth Street extended;

T. Thence East two hundred, eighty-five (285.0) feet; thence South sixty (60) feet; thence East to the West line of the right-of-way of the Missouri, Kansas, and Texas Railroad Company; thence Northwesterly along said line to its intersection with the West line of the Southeast Quarter (SE/4) of Section Twenty-one (21);

U. Thence North to the Northwest (NW) Corner of the Southeast Quarter (SE/4) of Section Twenty-one (21); thence East along the South line of the Northeast Quarter (NE/4) of Section Twenty-one

(21), six hundred, ninety-six (696.0) feet; thence North five hundred, eighty (580.0) feet; thence West along the North line of Foster's Addition one hundred, seventeen and one half (117.5) feet; thence North one hundred, eighty seven and one hundredth (187.01) feet; thence Northwesterly two hundred, thirty-nine and 58 hundredths (239.58) feet; thence West-Northwesterly three hundred, sixty three and fourteen hundredths (363.14) feet; thence West twenty and sixty-two hundredths (20.62) feet to a point on the West line of the Northeast Quarter of Section 21; thence North along the West line of the Northeast Quarter (NE/4) of Section Twenty-one (21) three hundred, seventy (370.0) feet to the Northeast (NE) Corner of New Chicago, a plat of the Original town site;

V. Thence West to the East line of the right-of-way of the Missouri, Kansas, and Texas Railroad Company, thence Northwesterly along the East line of said right-of-way to a point where the East line of the West half (W/2) of the Southwest Quarter (SW/4) of Section Sixteen (16), Township Twenty-seven (27) South, Range Eighteen (18) East, crosses said right-of-way;

W. Thence North along the East line of the West Half (W/2) of the Southwest Quarter (SW/4) of Section Sixteen (16), to the point of Beginning; all in Neosho County, Kansas.

Also the following tracts:

TRACT 1. Beginning at a point Nine hundred sixty-nine and forty hundredths (969.4) feet North and fifty (50) feet East of the Southwest (SW) Corner of the Southwest Quarter (SW/4) of the Northwest Quarter (NW/4) of Section Four (4), Township Twenty-eight (28) South, Range Eighteen (18) East; Neosho County, Kansas, thence Northerly on said Section Line Two hundred twenty-five (225) feet; thence Easterly parallel to the North line of said Section Line Five hundred (500) feet; thence Southerly parallel to the West Section Line Two hundred twenty-five (225) feet; thence Westerly five hundred (500) feet to point of beginning.

TRACT 2. All of the North Twelve (12) acres of the South Half of the Southwest Quarter of the Northwest Quarter (S/2 SW/4 NW/4) of Section Four (4), Township Twenty-eight (28) South, Range Eighteen (18) East of the Sixth p.m., Neosho County, Kansas, excepting the highway right-of-way along the West Line thereof.

TRACT 3. The North Half of the Northwest Quarter of the Southwest Quarter (N/2 NW/4 SW/4) of Section Four (4), Township Twenty-eight (28) South, Range Eighteen (18) East of the Sixth p.m., Neosho County, Kansas, less and excepting therefrom a tract lying in the

Southwest Quarter (SW/4) of said Section commencing at the Northwest (NW) Corner of said Southwest Quarter (SW/4); thence East Fifty (50) feet; thence South Six hundred ninety-five and five tenths (695.5) feet; thence West Fifty (50) feet to the section line; thence North along the section line to the place of beginning.

TRACT 4. A tract beginning at a point 1976 feet West and 465' North of the Southeast Corner of the Northwest Quarter of Section Nineteen (19), T-27-S, R-18-E, of the Sixth P.M. thence North One hundred thirty-five (135) feet, thence West One hundred thirty-two (132) feet, thence South One hundred thirty-five (135) feet, thence East One hundred thirty-two (132) feet, to the point of beginning.

TRACT 5. A tract of land beginning 187.84 feet East and 25 feet North of the Southwest Corner of the Southeast Quarter of the Southwest Quarter of Section 29, Township 27 South, Range 18 East, Neosho County, Kansas; thence North 184 feet; thence West 194.24 feet; thence North 448.67 feet; thence East 258.32 feet; thence South 638 feet; thence West 70 feet to point of beginning.

TRACT 6. A tract beginning 690' East of the Southwest Corner of the Northwest quarter of section 4, Township 28, Range 18, Neosho County, Kansas. Thence North 140', thence East 642.16', thence South 140', thence West 643' to the point of beginning. Contains 2.07 acres.

Tract 7. A tract of land beginning 1505.03' East and 47.13' North of the Southwest corner of the Southeast Quarter of Section 31, Township 27 South, Range 18 East of the 6th principal meridian, Neosho County, Kansas; thence North 75°44'39" West, along the Northeasterly right-of-way line of highway 169 a distance of 44.81 feet; thence continuing along said right-of-way line South 87°33'21" West, a distance of 200.00 feet; thence continuing along said right-of-way line North 87°26'39" West, a distance of 803.10 feet; thence continuing along said right-of-way line North 19°45'39" West, a distance of 612.90 feet, thence North 87°33'21" East, parallel with the South line of the Southeast Quarter, a distance of 1225.40 feet; thence South 02°26'39" East; a distance of 667.99 feet to the point of beginning. Containing 16.274 acres, more or less.

Tract 8. A tract of land beginning at the Southeast corner of the Southwest Quarter of Section 30, Township 27 South, Range 18 East of the 6th principal meridian, Neosho County, Kansas; Thence North 00°53'29" West along the East line of said Southwest Quarter a

distance of 662.74 feet to the South right of way line of the railroad; thence South 80°06'33" West along said South right of way line a distance of 1683.17 feet; Thence South 01°09'24" East a distance of 434.96 feet to the South line of said Southwest Quarter; Thence North 87°53'00" East along said South line a distance of 1660.82 feet to the point of beginning. Except the County road right of way along the south line thereof.

SECTION 2. The City Clerk shall forthwith file a certified copy of this Resolution, with each of the following officers: The County Clerk of Neosho County, Kansas; the Register of Deed of Neosho County, Kansas; and the State Transportation Engineer of the State of Kansas.

PASSED AND ADOPTED THIS _____ DAY OF NOVEMBER, 2025.

Jacob LaRue, Mayor

ATTEST:

Tina Bailey, City Clerk

11/10/2025 11:00 AM

REGULAR DEPARTMENT PAYMENT REPORT

PAGE: 1

VENDOR SET: 01 CITY OF CHANUTE

BANK: AP

FUND : 101 GENERAL

DEPARTMENT: N/A NON-DEPARTMENTAL

INVOICE DATE RANGE: 1/01/1998 THRU 99/99/9999

PAY DATE RANGE: 11/10/2025 THRU 11/10/2025

BUDGET TO USE: CB-CURRENT BUDGET

VENDOR	NAME	ITEM #	G/L ACCOUNT	NAME	DESCRIPTION	CHECK #	AMOUNT
01-0278	PETTY CASH	I-10444	101 21911.09.000	Building Depo: Central Park - Barnh	126151		50.00
01-0278	PETTY CASH	I-10445	101 21911.09.000	Building Depo: Central Park - Wheel	126151		50.00
						VENDOR 01-0278 TOTALS	100.00
				DEPARTMENT	NON-DEPARTMENTAL	TOTAL:	100.00

BANK: AP

VENDOR	NAME	ITEM #	G/L ACCOUNT	NAME	DESCRIPTION	CHECK #	AMOUNT
01-0262	NEOSHO MEMORIAL REGION	I-10.29.2025.02	101 4111.00-5902.00	Appropriation:	Annual SEK Housing C	126149	1,600.00
					VENDOR 01-0262	TOTALS	1,600.00
01-0278	PETTY CASH	I-10446	101 4111.00-3299.00	Other Profess:	Recording Fee - Fres	126151	42.00
					VENDOR 01-0278	TOTALS	42.00
01-0776	BANK OF COMMERCE	I-11-2025	101 4111.00-5906.00	Employee Chri:	Christmas & Years of	126118	11,300.00
					VENDOR 01-0776	TOTALS	11,300.00
01-3904	VERIZON WIRELESS	I-6126832175	101 4111.00-5211.00	Telephone Ser:	Cell Phones	126162	120.03
					VENDOR 01-3904	TOTALS	120.03
01-5694	T-MOBILE	I-995259911 10-2025	101 4111.00-5211.00	Telephone Ser:	Cell Phones	126159	21.57
					VENDOR 01-5694	TOTALS	21.57
				DEPARTMENT 111	CITY COMMISSION	TOTAL:	13,083.60

11/10/2025 11:00 AM

REGULAR DEPARTMENT PAYMENT REPORT

PAGE: 3

VENDOR SET: 01 CITY OF CHANUTE

BANK: AP

FUND : 101 GENERAL

DEPARTMENT: 121 MUNICIPAL COURT

INVOICE DATE RANGE: 1/01/1998 THRU 99/99/9999

PAY DATE RANGE: 11/10/2025 THRU 11/10/2025

BUDGET TO USE: CB-CURRENT BUDGET

VENDOR	NAME	ITEM #	G/L ACCOUNT	NAME	DESCRIPTION	CHECK #	AMOUNT
01-0163	HENSHALL, PENNINGTON	I-2500-10	101 4121.00-3221.00	Legal Service:	Legal Services Octob	126139	2,250.00
						VENDOR 01-0163 TOTALS	2,250.00
DEPARTMENT 121 MUNICIPAL COURT						TOTAL:	2,250.00

BANK: AP

FUND : 101 GENERAL

DEPARTMENT: 131 CITY MANAGER'S OFFICE

INVOICE DATE RANGE: 1/01/1998 THRU 99/99/9999

PAY DATE RANGE: 11/10/2025 THRU 11/10/2025

BUDGET TO USE: CB-CURRENT BUDGET

VENDOR	NAME	ITEM #	G/L ACCOUNT	NAME	DESCRIPTION	CHECK #	AMOUNT
01-0235	MC CARTY'S OFFICE MACH	I-11180-1	101 4131.00-6101.00	Office Suppli:	Envelopes	126146	42.79
					VENDOR 01-0235	TOTALS	42.79
01-3904	VERIZON WIRELESS	I-6126832175	101 4131.00-5211.00	Telephone Ser:	Cell Phones	126162	81.56
					VENDOR 01-3904	TOTALS	81.56
01-5053	GTT COMMUNICATIONS, IN	I-INV11294181	101 4131.00-5211.00	Telephone Ser:	VOIP	126137	56.67
					VENDOR 01-5053	TOTALS	56.67
				DEPARTMENT 131	CITY MANAGER'S OFFICE	TOTAL:	181.02

11/10/2025 11:00 AM

REGULAR DEPARTMENT PAYMENT REPORT

PAGE: 5

VENDOR SET: 01 CITY OF CHANUTE

BANK: AP

FUND : 101 GENERAL

DEPARTMENT: 132 GENERAL ADMIN. SERVICE

INVOICE DATE RANGE: 1/01/1998 THRU 99/99/9999

PAY DATE RANGE: 11/10/2025 THRU 11/10/2025

BUDGET TO USE: CB-CURRENT BUDGET

VENDOR	NAME	ITEM #	G/L ACCOUNT	NAME	DESCRIPTION	CHECK #	AMOUNT
01-5053	GTT COMMUNICATIONS, IN I-INV11294181		101 4132.00-5211.00	Telephone Ser: VOIP		126137	42.50
VENDOR 01-5053 TOTALS							42.50
DEPARTMENT 132 GENERAL ADMIN. SERVICE TOTAL:							42.50

PAGE : 6

BANK: AP

FUND : 101 GENERAL

DEPARTMENT: 133 HUMAN RESOURCES

INVOICE DATE RANGE: 1/01/1998 THRU 99/99/9999

PAY DATE RANGE: 11/10/2025 THRU 11/10/2025

BUDGET TO USE: CB-CURRENT BUDGET

VENDOR	NAME	ITEM #	G/L ACCOUNT	NAME	DESCRIPTION	CHECK #	AMOUNT
01-0235	MC CARTY'S OFFICE MACH	I-11180-1	101 4133.00-6101.00	Office Suppli	Binders/File Folders	126146	134.54
					VENDOR 01-0235	TOTALS	134.54
01-5053	GTT COMMUNICATIONS, IN	I-INV11294181	101 4133.00-5211.00	Telephone Ser	VOIP	126137	28.33
					VENDOR 01-5053	TOTALS	28.33
				DEPARTMENT 133	HUMAN RESOURCES	TOTAL:	162.87

11/10/2025 11:00 AM
 VENDOR SET: 01 CITY OF CHANUTE
 FUND : 101 GENERAL
 DEPARTMENT: 141 COMMUNITY DEVELOPMENT
 INVOICE DATE RANGE: 1/01/1998 THRU 99/99/9999
 PAY DATE RANGE: 11/10/2025 THRU 11/10/2025
 BUDGET TO USE: CB-CURRENT BUDGET

REGULAR DEPARTMENT PAYMENT REPORT

PAGE: 7
 BANK: AP

VENDOR	NAME	ITEM #	G/L ACCOUNT	NAME	DESCRIPTION	CHECK #	AMOUNT
01-0084	CITY OF CHANUTE	I-01-180 11012025	101 4141.00-3299.00	Other Profess: Res 2025-120	122 N 126121	10.00	
01-0084	CITY OF CHANUTE	I-01-180 11012025	101 4141.00-3299.00	Other Profess: Res 2025-118	303 N 126121	5.00	
01-0084	CITY OF CHANUTE	I-01-180 11012025	101 4141.00-3299.00	Other Profess: Res 2025-127	512 W 126121	5.00	
VENDOR 01-0084 TOTALS						20.00	
01-0086	CITY OF CHANUTE	I-01-482 11012025	101 4141.00-4106.00	Fiber : Internet - Com Dev	126123	100.00	
VENDOR 01-0086 TOTALS						100.00	
01-5053	GTT COMMUNICATIONS, IN I-INV11294181		101 4141.00-5211.00	Telephone Ser: VOIP	126137	56.67	
VENDOR 01-5053 TOTALS						56.67	
01-5331	T&V PROPERTIES	I-10312025	101 4141.00-3299.00	Other Profess: Res 2025-120	122 N 126158	390.00	
VENDOR 01-5331 TOTALS						390.00	
01-5769	PRIME TIME MOWING	I-669629	101 4141.00-4502.00	Contractual M: Mowed - 21st RR	126153	180.00	
01-5769	PRIME TIME MOWING	I-669630	101 4141.00-4502.00	Contractual M: Mowed - 14th Street	126153	90.00	
01-5769	PRIME TIME MOWING	I-669631	101 4141.00-4502.00	Contractual M: Mowed - 210 S Tennes	126153	30.00	
VENDOR 01-5769 TOTALS						300.00	
DEPARTMENT 141 COMMUNITY DEVELOPMENT TOTAL:						866.67	

PAGE: 8

BANK: AP

BUDGET TO USE: CB-CURRENT BUDGET

VENDOR	NAME	ITEM #	G/L ACCOUNT	NAME	DESCRIPTION	CHECK #	AMOUNT
01-0163	HENSHALL, PENNINGTON	I-2500-10	101 4142.00-3221.00	Legal Service:	Legal Services Octob	126139	3,840.00
01-0163	HENSHALL, PENNINGTON	I-2500-10	101 4142.00-5704.00	Meeting Expen:	APPA Conference	126139	1,978.84
					VENDOR 01-0163	TOTALS	5,818.84
				DEPARTMENT 142	LEGAL SERVICES	TOTAL:	5,818.84

11/10/2025 11:00 AM
 VENDOR SET: 01 CITY OF CHANUTE
 FUND : 101 GENERAL
 DEPARTMENT: 171 PUBLIC BUILDINGS/GROUNDS
 INVOICE DATE RANGE: 1/01/1998 THRU 99/99/9999
 PAY DATE RANGE: 11/10/2025 THRU 11/10/2025
 BUDGET TO USE: CB-CURRENT BUDGET

REGULAR DEPARTMENT PAYMENT REPORT

PAGE: 9
 BANK: AP

VENDOR	NAME	ITEM #	G/L ACCOUNT	NAME	DESCRIPTION	CHECK #	AMOUNT
01-0086	CITY OF CHANUTE	I-01-482 11012025	101 4171.01-4106.00	Fiber	: Internet - Mem Bldg	126123	400.00
01-0086	CITY OF CHANUTE	I-01-482 11012025	101 4171.08-4106.00	Fiber	: Internet - Armory	126123	200.00
				VENDOR 01-0086	TOTALS		600.00
01-0289	QUILL CORPORATION	I-46260057	101 4171.01-6536.00	Janitorial &	: Napkins/Towels/TP	126154	273.55
				VENDOR 01-0289	TOTALS		273.55
01-0715	CLEAN UNIFORM COMPANY	I-22311807	101 4171.01-6536.00	Janitorial &	: Mop Heads - Public B	126130	5.52
				VENDOR 01-0715	TOTALS		5.52
01-5053	GTT COMMUNICATIONS, IN	I-INV11294181	101 4171.01-5211.00	Telephone Ser:	VOIP	126137	14.17
				VENDOR 01-5053	TOTALS		14.17
				DEPARTMENT 171	PUBLIC BUILDINGS/GROUNDS TOTAL:		893.24

PAGE: 10
BANK: AP

VENDOR	NAME	ITEM #	G/L ACCOUNT	NAME	DESCRIPTION	CHECK #	AMOUNT
01-0086	CITY OF CHANUTE	I-01-482 11012025	101 4211.05-4106.00	Fiber	: Internet - Police	126123	100.00
					VENDOR 01-0086	TOTALS	100.00
01-5053	GTT COMMUNICATIONS, IN	I-INV11294181	101 4211.05-5211.00	Telephone Ser:	VOIP	126137	99.17
					VENDOR 01-5053	TOTALS	99.17
01-5517	TRANSUNION RISK AND AL	I-6355732-202510-1	101 4211.05-3399.00	Other Contrac:	Contract	126161	127.50
					VENDOR 01-5517	TOTALS	127.50
01-5694	T-MOBILE	I-995259911 10-2025	101 4211.05-5211.00	Telephone Ser:	Cell Phones	126159	1,047.71
					VENDOR 01-5694	TOTALS	1,047.71
				DEPARTMENT 211	POLICE	TOTAL:	1,374.38

11/10/2025 11:00 AM

REGULAR DEPARTMENT PAYMENT REPORT

PAGE: 11

VENDOR SET: 01 CITY OF CHANUTE

BANK: AP

FUND : 101 GENERAL

DEPARTMENT: 216 DISPATCH

INVOICE DATE RANGE: 1/01/1998 THRU 99/99/9999

PAY DATE RANGE: 11/10/2025 THRU 11/10/2025

BUDGET TO USE: CB-CURRENT BUDGET

VENDOR	NAME	ITEM #	G/L ACCOUNT	NAME	DESCRIPTION	CHECK #	AMOUNT
01-5053	GTT COMMUNICATIONS, IN I-INV11294181		101 4216.00-5211.00	Telephone Ser: VOIP		126137	141.67
					VENDOR 01-5053	TOTALS	141.67
01-5517	TRANSUNION RISK AND AL I-6355732-202510-1		101 4216.00-3399.00	Other Contrac: Contract		126161	127.50
					VENDOR 01-5517	TOTALS	127.50
			DEPARTMENT 216	DISPATCH		TOTAL:	269.17

PAGE: 12
BANK: AP

VENDOR	NAME	ITEM #	G/L ACCOUNT	NAME	DESCRIPTION	CHECK #	AMOUNT
01-3904	VERIZON WIRELESS	I-6126832175	101 4221.02-5211.00	Telephone Ser:	Cell Phones	126162	40.01
					VENDOR 01-3904	TOTALS	40.01
01-5053	GTT COMMUNICATIONS, IN	I-INV11294181	101 4221.02-5211.00	Telephone Ser:	VOIP	126137	28.33
					VENDOR 01-5053	TOTALS	28.33
				DEPARTMENT 221	FIRE	TOTAL:	68.34

11/10/2025 11:00 AM

REGULAR DEPARTMENT PAYMENT REPORT

PAGE: 13

VENDOR SET: 01 CITY OF CHANUTE

BANK: AP

FUND : 101 GENERAL

DEPARTMENT: 231 ANIMAL CONTROL

INVOICE DATE RANGE: 1/01/1998 THRU 99/99/9999

PAY DATE RANGE: 11/10/2025 THRU 11/10/2025

BUDGET TO USE: CB-CURRENT BUDGET

VENDOR	NAME	ITEM #	G/L ACCOUNT	NAME	DESCRIPTION	CHECK #	AMOUNT
01-0032	ANIMAL MEDICAL CENTER	I-1107996	101 4231.00-3233.00	Veterinarian	: ACO Euthanasia Dogs	126116	75.87
				VENDOR 01-0032	TOTALS		75.87
01-0050	BREINER'S FEED	I-80833	101 4231.00-6503.00	Animal Feed a:	Cat Litter	126120	81.90
				VENDOR 01-0050	TOTALS		81.90
01-0084	CITY OF CHANUTE	I-01-004 11012025	101 4231.00-4107.00	Landfill Fees:	ACO Landfill Fees	126121	20.17
				VENDOR 01-0084	TOTALS		20.17
01-0086	CITY OF CHANUTE	I-01-482 11012025	101 4231.00-4106.00	Fiber	: Internet - ACO	126123	100.00
				VENDOR 01-0086	TOTALS		100.00
01-0089	CLEAVERS FARM SUPPLY	I-2511-751173	101 4231.00-6599.00	Miscellaneous:	Shelter Repairs	126131	88.06
				VENDOR 01-0089	TOTALS		88.06
DEPARTMENT 231 ANIMAL CONTROL						TOTAL:	366.00

BANK: AP

FUND : 101 GENERAL

DEPARTMENT: 311 STREETS AND ROADS

INVOICE DATE RANGE: 1/01/1998 THRU 99/99/9999

PAY DATE RANGE: 11/10/2025 THRU 11/10/2025

BUDGET TO USE: CB-CURRENT BUDGET

VENDOR	NAME	ITEM #	G/L ACCOUNT	NAME	DESCRIPTION	CHECK #	AMOUNT
01-0086	CITY OF CHANUTE	I-01-482 11012025	101 4311.01-4106.00	Fiber	: Internet - Streets	126123	100.00
					VENDOR 01-0086	TOTALS	100.00
01-3904	VERIZON WIRELESS	I-6126832175	101 4311.01-5211.00	Telephone Ser:	Cell Phones	126162	81.56
					VENDOR 01-3904	TOTALS	81.56
				DEPARTMENT 311	STREETS AND ROADS	TOTAL:	181.56

11/10/2025 11:00 AM

REGULAR DEPARTMENT PAYMENT REPORT

PAGE: 15

VENDOR SET: 01 CITY OF CHANUTE

BANK: AP

FUND : 101 GENERAL

DEPARTMENT: 321 CEMETERY

INVOICE DATE RANGE: 1/01/1998 THRU 99/99/9999

PAY DATE RANGE: 11/10/2025 THRU 11/10/2025

BUDGET TO USE: CB-CURRENT BUDGET

VENDOR	NAME	ITEM #	G/L ACCOUNT	NAME	DESCRIPTION	CHECK #	AMOUNT
01-0086	CITY OF CHANUTE	I-01-482 11012025	101 4321.00-4106.00	Fiber	: Internet - Cemetery	126123	100.00
					VENDOR 01-0086	TOTALS	100.00
01-2469	ROSCOE'S LAWN CARE LLC	I-4171	101 4321.00-3399.00	Other Contrac	: Elmwood Mowing Oct 2	126156	17,470.71
					VENDOR 01-2469	TOTALS	17,470.71
01-5681	B&L LAWN AND LANDSCAPE	I-1062	101 4321.00-3399.00	Other Contrac	: Memorial Park Mowing	126117	13,520.00
					VENDOR 01-5681	TOTALS	13,520.00
				DEPARTMENT 321	CEMETERY	TOTAL:	31,090.71

11/10/2025 11:00 AM
VENDOR SET: 01 CITY OF CHANUTE
FUND : 101 GENERAL
DEPARTMENT: 331 AIRPORT
INVOICE DATE RANGE: 1/01/1998 THRU 99/99/9999
PAY DATE RANGE: 11/10/2025 THRU 11/10/2025
BUDGET TO USE: CB-CURRENT BUDGET

REGULAR DEPARTMENT PAYMENT REPORT

VENDOR	NAME	ITEM #	G/L ACCOUNT	NAME	DESCRIPTION	CHECK #	AMOUNT
01-0086	CITY OF CHANUTE	I-01-482	11012025	101 4331.00-4106.00 Fiber	: Internet - Airport	126123	200.00
						VENDOR 01-0086 TOTALS	200.00
01-0411	HUGO'S INDUSTRIAL SUPP	I-343776		101 4331.00-6536.00 Janitorial &	: Liners	126141	85.94
						VENDOR 01-0411 TOTALS	85.94
01-3904	VERIZON WIRELESS	I-6126832175		101 4331.00-5211.00 Telephone Ser:	Cell Phones	126162	41.55
						VENDOR 01-3904 TOTALS	41.55
						DEPARTMENT 331 AIRPORT TOTAL:	327.49

11/10/2025 11:00 AM

REGULAR DEPARTMENT PAYMENT REPORT

PAGE: 17

VENDOR SET: 01 CITY OF CHANUTE

BANK: AP

FUND : 101 GENERAL

DEPARTMENT: 511 PARKS

INVOICE DATE RANGE: 1/01/1998 THRU 99/99/9999

PAY DATE RANGE: 11/10/2025 THRU 11/10/2025

BUDGET TO USE: CB-CURRENT BUDGET

VENDOR	NAME	ITEM #	G/L ACCOUNT	NAME	DESCRIPTION	CHECK #	AMOUNT
01-0086	CITY OF CHANUTE	I-01-482 11012025	101 4511.00-4106.00	Fiber	: Internet - Parks	126123	100.00
						VENDOR 01-0086 TOTALS	100.00
01-0411	HUGO'S INDUSTRIAL SUPP	I-343770	101 4511.00-6536.00	Janitorial &	: Batteries	126141	17.69
01-0411	HUGO'S INDUSTRIAL SUPP	I-343774	101 4511.00-6536.00	Janitorial &	: Trash Bags	126141	77.60
						VENDOR 01-0411 TOTALS	95.29
01-0715	CLEAN UNIFORM COMPANY	I-22311807	101 4511.00-6536.00	Janitorial &	: Mop Heads - Parks	126130	5.32
						VENDOR 01-0715 TOTALS	5.32
01-2469	ROSCOES LAWN CARE LLC	I-4171	101 4511.00-3399.00	Other Contrac:	Greenspace Mowing Oc	126156	1,650.00
						VENDOR 01-2469 TOTALS	1,650.00
01-5266	VERNA BOCKOVER	I-102625	101 4511.00-6536.00	Janitorial &	: Batteries - Reimburs	126119	14.43
01-5266	VERNA BOCKOVER	I-110125-CP	101 4511.00-4201.00	Custodial Ser:	Central Park 10/09/2	126119	918.00
						VENDOR 01-5266 TOTALS	932.43
01-5681	B&L LAWN AND LANDSCAPE	I-1062	101 4511.00-3399.00	Other Contrac:	Greenspace Mowing Oc	126117	870.00
						VENDOR 01-5681 TOTALS	870.00
DEPARTMENT 511 PARKS						TOTAL:	3,653.04

VENDOR	NAME	ITEM #	G/L ACCOUNT	NAME	DESCRIPTION	CHECK #	AMOUNT
01-0086	CITY OF CHANUTE	I-01-482 11012025	101 4516.00-4106.00	Fiber	: Internet - Golf Cour	126123	100.00
					VENDOR 01-0086	TOTALS	100.00
01-0089	CLEAVERS FARM SUPPLY	I-2510-748889	101 4516.00-6599.00	Miscellaneous:	Keys	126131	5.37
					VENDOR 01-0089	TOTALS	5.37
01-0411	HUGO'S INDUSTRIAL SUPP	I-343638	101 4516.00-6536.00	Janitorial &	: Paper Towels/Trash B	126141	222.49
					VENDOR 01-0411	TOTALS	222.49
01-2214	MARMIC FIRE & SAFETY C	I-D468098	101 4516.00-6699.00	Misc Building:	Fire Suppression Sys	126145	3,423.91
					VENDOR 01-2214	TOTALS	3,423.91
01-5053	GTT COMMUNICATIONS, IN	I-INV11294181	101 4516.00-5211.00	Telephone Ser:	VOIP	126137	14.17
					VENDOR 01-5053	TOTALS	14.17
01-5371	EASY ICE	I-1833965	101 4516.00-4403.00	Rental/Lease	: Ice Machine Lease	126133	300.98
					VENDOR 01-5371	TOTALS	300.98
				DEPARTMENT 516	GOLF COURSE	TOTAL:	4,066.92
				VENDOR SET 101	GENERAL	TOTAL:	64,796.35

11/10/2025 11:00 AM

REGULAR DEPARTMENT PAYMENT REPORT

PAGE: 19

VENDOR SET: 01 CITY OF CHANUTE

BANK: AP

FUND : 215 CITY EMPLOYEE BENEFITS

DEPARTMENT: 199 EMPLOYEE BENEFITS

INVOICE DATE RANGE: 1/01/1998 THRU 99/99/9999

PAY DATE RANGE: 11/10/2025 THRU 11/10/2025

BUDGET TO USE: CB-CURRENT BUDGET

VENDOR	NAME	ITEM #	G/L ACCOUNT	NAME	DESCRIPTION	CHECK #	AMOUNT
01-4130	INERTIA HEALTH & FITNE	I-353	215 4199.00-2107.00	Other Employee:	Fitness Memberships	126142	40.00
						VENDOR 01-4130 TOTALS	40.00
						DEPARTMENT 199 EMPLOYEE BENEFITS TOTAL:	40.00
						VENDOR SET 215 CITY EMPLOYEE BENEFITS TOTAL:	40.00

BANK: AP

FUND : 217 RECREATION COMPLEX

DEPARTMENT: 550 RECREATION COMMISSION

INVOICE DATE RANGE: 1/01/1998 THRU 99/99/9999

PAY DATE RANGE: 11/10/2025 THRU 11/10/2025

BUDGET TO USE: CB-CURRENT BUDGET

VENDOR	NAME	ITEM #	G/L ACCOUNT	NAME	DESCRIPTION	CHECK #	AMOUNT
01-0086	CITY OF CHANUTE	I-01-482 11012025	217 4550.00-4106.00	Fiber	: Internet - CRC	126123	100.00
					VENDOR 01-0086	TOTALS	100.00

DEPARTMENT 550	RECREATION COMMISSION	TOTAL:	100.00
----------------	-----------------------	--------	--------

VENDOR SET 217	RECREATION COMPLEX	TOTAL:	100.00
----------------	--------------------	--------	--------

11/10/2025 11:00 AM

REGULAR DEPARTMENT PAYMENT REPORT

PAGE: 21

VENDOR SET: 01 CITY OF CHANUTE

BANK: AP

FUND : 501 ELECTRIC UTILITY

DEPARTMENT: N/A NON-DEPARTMENTAL

INVOICE DATE RANGE: 1/01/1998 THRU 99/99/9999

PAY DATE RANGE: 11/10/2025 THRU 11/10/2025

BUDGET TO USE: CB-CURRENT BUDGET

VENDOR	NAME	ITEM #	G/L ACCOUNT	NAME	DESCRIPTION	CHECK #	AMOUNT
01-0086	CITY OF CHANUTE	I-11032025	501 3000.00-7101.00	Residential S:	Setoff Collection Fe	126124	54.06
01-0086	CITY OF CHANUTE	I-16-1630-21	501 3000.00-7101.00	Residential S:	Sec Deposit Acct	126125	28.00
01-0086	CITY OF CHANUTE	I-17-1000-14 103125	501 3000.00-7101.00	Residential S:	Sec Deposit Acct	126126	43.55
01-0086	CITY OF CHANUTE	I-17-1290-07	501 3000.00-7101.00	Residential S:	Sec Deposit Acct	126127	22.94
01-0086	CITY OF CHANUTE	I-75-1210-13	501 3000.00-7101.00	Residential S:	Sec Deposit Acct	126128	66.00
01-0086	CITY OF CHANUTE	I-82-2130-13	501 3000.00-7101.00	Residential S:	Sec Deposit Acct	126129	140.00
						VENDOR 01-0086 TOTALS	354.55
01-5814	BETTY FEHR	I-84-1370-13	501 3000.00-7101.00	Residential S:	Refund Credit Balanc	126134	358.64
						VENDOR 01-5814 TOTALS	358.64
01-5815	GREG KERNICK	I-82-2300-03	501 3000.00-7101.00	Residential S:	Refund Credit Balanc	126143	220.16
						VENDOR 01-5815 TOTALS	220.16
						DEPARTMENT NON-DEPARTMENTAL TOTAL:	933.35

PAGE: 22
BANK: AP

VENDOR	NAME	ITEM #	G/L ACCOUNT	NAME	DESCRIPTION	CHECK #	AMOUNT
01-0086	CITY OF CHANUTE	I-01-482 11012025	501 4411.01-4106.00	Fiber	: Internet - Elec Prod	126123	500.00
					VENDOR 01-0086	TOTALS	500.00
01-0163	HENSHALL, PENNINGTON	I-2500-10	501 4411.01-3221.00	Legal Service:	Legal Services - Ele	126139	1,656.00
					VENDOR 01-0163	TOTALS	1,656.00
01-0411	HUGO'S INDUSTRIAL SUPP	I-343654	501 4411.01-6536.00	Janitorial &	: Toilet Paper	126141	77.77
01-0411	HUGO'S INDUSTRIAL SUPP	I-343828	501 4411.01-6101.00	Office Suppli:	Copy Paper	126141	66.24
					VENDOR 01-0411	TOTALS	144.01
01-0715	CLEAN UNIFORM COMPANY	I-22313636	501 4411.01-6507.00	Clothing - Pr:	Uniforms - Pwr Plt	126130	111.29
					VENDOR 01-0715	TOTALS	111.29
01-2610	AIRGAS USA, LLC	I-9166077419	501 4411.01-4403.00	Rental/Lease	: CEMS Cylinder Lease	126115	679.89
					VENDOR 01-2610	TOTALS	679.89
01-3606	MICHAEL HANSEN	I-100225MH	501 4411.01-3299.00	Other Profess:	Training Reimburseme	126138	1,285.40
					VENDOR 01-3606	TOTALS	1,285.40
01-3904	VERIZON WIRELESS	I-6126832175	501 4411.01-5211.00	Telephone Ser:	Cell Phones	126162	6.36
					VENDOR 01-3904	TOTALS	6.36
01-4474	SCOTT FORD	I-100225SF	501 4411.01-3299.00	Other Profess:	Training Reimburseme	126135	1,183.44
					VENDOR 01-4474	TOTALS	1,183.44
01-4831	QUINTON HOGUE	I-100225QH	501 4411.01-3299.00	Other Profess:	Training Reimburseme	126140	1,299.58
					VENDOR 01-4831	TOTALS	1,299.58

11/10/2025 11:00 AM

REGULAR DEPARTMENT PAYMENT REPORT

PAGE: 23

VENDOR SET: 01 CITY OF CHANUTE

BANK: AP

FUND : 501 ELECTRIC UTILITY

DEPARTMENT: 411 ELECTRIC PRODUCTION

INVOICE DATE RANGE: 1/01/1998 THRU 99/99/9999

PAY DATE RANGE: 11/10/2025 THRU 11/10/2025

BUDGET TO USE: CB-CURRENT BUDGET

VENDOR	NAME	ITEM #	G/L ACCOUNT	NAME	DESCRIPTION	CHECK #	AMOUNT
01-5053	GTT COMMUNICATIONS, IN I-INV11294181		501 4411.01-5211.00	Telephone Ser: VOIP		126137	99.18
					VENDOR 01-5053	TOTALS	99.18
01-5264	CHRIS TAYLOR	I-100225CT	501 4411.01-3299.00	Other Profess: Training Reimburseme	126160		1,369.39
					VENDOR 01-5264	TOTALS	1,369.39
			DEPARTMENT 411	ELECTRIC PRODUCTION		TOTAL:	8,334.54

PAGE: 24
BANK: AP

VENDOR SET 501	ELECTRIC UTILITY	TOTAL:	11,769.02
----------------	------------------	--------	-----------

11/10/2025 11:00 AM

REGULAR DEPARTMENT PAYMENT REPORT

PAGE: 25

VENDOR SET: 01 CITY OF CHANUTE

BANK: AP

FUND : 502 WATER UTILITY

DEPARTMENT: 422 WATER TREATMENT PLANT

INVOICE DATE RANGE: 1/01/1998 THRU 99/99/9999

PAY DATE RANGE: 11/10/2025 THRU 11/10/2025

BUDGET TO USE: CB-CURRENT BUDGET

VENDOR	NAME	ITEM #	G/L ACCOUNT	NAME	DESCRIPTION	CHECK #	AMOUNT
01-0086	CITY OF CHANUTE	I-01-482 11012025	502 4422.01-4106.00	Fiber	: Internet - Wtr Plt	126123	500.00
					VENDOR 01-0086	TOTALS	500.00
01-5053	GTT COMMUNICATIONS, IN I-INV11294181		502 4422.01-5211.00	Telephone Ser: VOIP		126137	28.34
					VENDOR 01-5053	TOTALS	28.34
			DEPARTMENT 422	WATER TREATMENT PLANT	TOTAL:		528.34

PAGE: 26

BANK: AP

BUDGET TO USE: CB-CURRENT BUDGET

VENDOR	NAME	ITEM #	G/L ACCOUNT	NAME	DESCRIPTION	CHECK #	AMOUNT
01-3904	VERIZON WIRELESS	I-6126832175	502 4423.01-5211.00	Telephone Ser:	Cell Phones	126162	40.01
						VENDOR 01-3904 TOTALS	40.01
						DEPARTMENT 423 WATER TRANSMISSION/DISTR TOTAL:	40.01
						VENDOR SET 502 WATER UTILITY TOTAL:	568.35

11/10/2025 11:00 AM

REGULAR DEPARTMENT PAYMENT REPORT

PAGE: 27

VENDOR SET: 01 CITY OF CHANUTE

BANK: AP

FUND : 503 GAS UTILITY

DEPARTMENT: 434 GAS DISTRIBUTION

INVOICE DATE RANGE: 1/01/1998 THRU 99/99/9999

PAY DATE RANGE: 11/10/2025 THRU 11/10/2025

BUDGET TO USE: CB-CURRENT BUDGET

VENDOR	NAME	ITEM #	G/L ACCOUNT	NAME	DESCRIPTION	CHECK #	AMOUNT
01-0163	HENSALL, PENNINGTON	I-2500-10	503 4434.02-3221.00	Legal Service:	Legal Services - Gas	126139	24.00
				VENDOR 01-0163	TOTALS		24.00
01-3904	VERIZON WIRELESS	I-6126832175	503 4434.02-5211.00	Telephone Ser:	Cell Phones	126162	80.02
				VENDOR 01-3904	TOTALS		80.02
01-5053	GTT COMMUNICATIONS, IN	I-INV11294181	503 4434.02-5211.00	Telephone Ser:	VOIP	126137	28.34
				VENDOR 01-5053	TOTALS		28.34
DEPARTMENT 434 GAS DISTRIBUTION						TOTAL:	132.36
VENDOR SET 503 GAS UTILITY						TOTAL:	132.36

PAGE: 28

BUDGET TO USE: CB-CURRENT BUDGET

VENDOR	NAME	ITEM #	G/L ACCOUNT	NAME	DESCRIPTION	CHECK #	AMOUNT
01-0086	CITY OF CHANUTE	I-01-482 11012025	504 4442.00-4106.00	Fiber	: Internet - Refuse	126123	200.00
					VENDOR 01-0086	TOTALS	200.00
01-5053	GTT COMMUNICATIONS, IN	I-INV11294181	504 4442.00-5211.00	Telephone Ser:	VOIP	126137	14.17
					VENDOR 01-5053	TOTALS	14.17
				DEPARTMENT 442	REFUSE LANDFILL	TOTAL:	214.17
				VENDOR SET 504	REFUSE UTILITY	TOTAL:	214.17

11/10/2025 11:00 AM

REGULAR DEPARTMENT PAYMENT REPORT

PAGE: 29

VENDOR SET: 01 CITY OF CHANUTE

BANK: AP

FUND : 505 SEWER UTILITY

DEPARTMENT: 453 SEWER TREATMENT/DISPOSAL

INVOICE DATE RANGE: 1/01/1998 THRU 99/99/9999

PAY DATE RANGE: 11/10/2025 THRU 11/10/2025

BUDGET TO USE: CB-CURRENT BUDGET

VENDOR	NAME	ITEM #	G/L ACCOUNT	NAME	DESCRIPTION	CHECK #	AMOUNT
01-0086	CITY OF CHANUTE	I-01-482 11012025	505 4453.01-4106.00	Fiber	: Internet - WWTP	126123	500.00
					VENDOR 01-0086	TOTALS	500.00
01-0163	HENSHALL, PENNINGTON	I-2500-10	505 4453.01-3221.00	Legal Service:	Legal Services - Was	126139	96.00
					VENDOR 01-0163	TOTALS	96.00
01-3904	VERIZON WIRELESS	I-6126832175	505 4453.01-5211.00	Telephone Ser:	Cell Phones	126162	41.55
					VENDOR 01-3904	TOTALS	41.55
01-5053	GTT COMMUNICATIONS, IN	I-INV11294181	505 4453.01-5211.00	Telephone Ser:	VOIP	126137	28.33
					VENDOR 01-5053	TOTALS	28.33
DEPARTMENT 453 SEWER TREATMENT/DISPOSAL TOTAL:							665.88
VENDOR SET 505 SEWER UTILITY						TOTAL:	665.88

VENDOR SET: 01 CITY OF CHANUTE

BANK: AP

FUND : 506 FIBER/COMMUNICATION

DEPARTMENT: 415 FIBER COMMUNICATIONS

INVOICE DATE RANGE: 1/01/1998 THRU 99/99/9999

PAY DATE RANGE: 11/10/2025 THRU 11/10/2025

BUDGET TO USE: CB-CURRENT BUDGET

VENDOR	NAME	ITEM #	G/L ACCOUNT	NAME	DESCRIPTION	CHECK #	AMOUNT
01-0086	CITY OF CHANUTE	I-01-482 11012025	506 4415.00-4106.00	Fiber	: Internet - Fiber	126123	200.00
					VENDOR 01-0086	TOTALS	200.00
01-0715	CLEAN UNIFORM COMPANY	I-22313630	506 4415.00-6507.00	Clothing - Pr:	Uniforms - Fiber	126130	22.37
					VENDOR 01-0715	TOTALS	22.37
01-5457	GLOBALNET PRO INC	I-I19483	506 4415.00-7402.00	Communication:	2 SWITCHES	126136	4,800.00
					VENDOR 01-5457	TOTALS	4,800.00
01-5760	RAPIDSCALE, INC	I-INV00309384	506 4415.00-3208.00	Computer Serv:	Cloud Storage	126155	576.53
					VENDOR 01-5760	TOTALS	576.53
				DEPARTMENT 415	FIBER COMMUNICATIONS	TOTAL:	5,598.90
				VENDOR SET 506	FIBER/COMMUNICATION	TOTAL:	5,598.90

11/10/2025 11:00 AM

REGULAR DEPARTMENT PAYMENT REPORT

PAGE: 31

VENDOR SET: 01 CITY OF CHANUTE

BANK: AP

FUND : 525 I & I SEWER PROJ. RESERVE

DEPARTMENT: 470 I & I SEWER PROJECT

INVOICE DATE RANGE: 1/01/1998 THRU 99/99/9999

PAY DATE RANGE: 11/10/2025 THRU 11/10/2025

BUDGET TO USE: CB-CURRENT BUDGET

VENDOR	NAME	ITEM #	G/L ACCOUNT	NAME	DESCRIPTION	CHECK #	AMOUNT
01-5333	MIDWEST ENGINEERING GR	I-INV#15 WWTP	525 4470.00-3214.00	Engineering S:	Eng Services 09/14-1	126148	63,426.10
	PROJ: 550-2025-001	WASTEWATER PROJECTS		WWTP Improvements 2025			
				VENDOR 01-5333	TOTALS		63,426.10
				DEPARTMENT 470	I & I SEWER PROJECT	TOTAL:	63,426.10
				VENDOR SET 525	I & I SEWER PROJ. RESERVE	TOTAL:	63,426.10

BUDGET TO USE: CB-CURRENT BUDGET

VENDOR	NAME	ITEM #	G/L ACCOUNT	NAME	DESCRIPTION	CHECK #	AMOUNT
01-5333	MIDWEST ENGINEERING GR I-INV#32 WTP		534 4901.02-3214.00	Engineering S: Eng Services	09/14-1 126148		69,648.15
	PROJ: 520-2024-001	WATER PROJECTS		Water Treatment Plant Upgrade			
				VENDOR 01-5333	TOTALS		69,648.15
				DEPARTMENT 901	WATER PLANT PROJECT-2021 TOTAL:		69,648.15
				VENDOR SET 534	WATER PLANT PROJECT 2021 TOTAL:		69,648.15

11/10/2025 11:00 AM

REGULAR DEPARTMENT PAYMENT REPORT

PAGE: 33

VENDOR SET: 01 CITY OF CHANUTE

BANK: AP

FUND : 602 UTILITY SERVICES

DEPARTMENT: 821 UTILITY ADMIN SERVICE

INVOICE DATE RANGE: 1/01/1998 THRU 99/99/9999

PAY DATE RANGE: 11/10/2025 THRU 11/10/2025

BUDGET TO USE: CB-CURRENT BUDGET

VENDOR	NAME	ITEM #	G/L ACCOUNT	NAME	DESCRIPTION	CHECK #	AMOUNT
01-0235	MC CARTY'S OFFICE MACH	I-11180-1	602 4821.00-6101.00	Office Suppli:	Dividers/Counterfeit	126146	93.43
					VENDOR 01-0235	TOTALS	93.43
01-5053	GTT COMMUNICATIONS, IN	I-INV11294181	602 4821.00-5211.00	Telephone Ser:	VOIP	126137	42.50
					VENDOR 01-5053	TOTALS	42.50
				DEPARTMENT 821	UTILITY ADMIN SERVICE	TOTAL:	135.93

PAGE: 34

VENDOR SET: 01 CITY OF CHANUTE
FUND : 602 UTILITY SERVICES
DEPARTMENT: 822 UTILITY BUSINESS OFFICE
INVOICE DATE RANGE: 1/01/1998 THRU 99/99/9999
PAY DATE RANGE: 11/10/2025 THRU 11/10/2025
BUDGET TO USE: CB-CURRENT BUDGET

11/10/2025 11:00 AM

REGULAR DEPARTMENT PAYMENT REPORT

PAGE: 35

VENDOR SET: 01 CITY OF CHANUTE

BANK: AP

FUND : 602 UTILITY SERVICES

DEPARTMENT: 823 DATA PROCESSING

INVOICE DATE RANGE: 1/01/1998 THRU 99/99/9999

PAY DATE RANGE: 11/10/2025 THRU 11/10/2025

BUDGET TO USE: CB-CURRENT BUDGET

VENDOR	NAME	ITEM #	G/L ACCOUNT	NAME	DESCRIPTION	CHECK #	AMOUNT
01-5053	GTT COMMUNICATIONS, IN	I-INV11294181	602 4823.00-5211.00	Telephone Ser: VOIP		126137	42.50
					VENDOR 01-5053	TOTALS	42.50
01-5257	LAKELAND OFFICE SYSTEM I-	IN683825	602 4823.00-4312.00	R&M:Office Eq: Copier Maint		126144	22.17
					VENDOR 01-5257	TOTALS	22.17
01-5760	RAPIDSCALE, INC	I-INV00309384	602 4823.00-3208.00	Computer Serv: Cloud Storage		126155	576.52
					VENDOR 01-5760	TOTALS	576.52
DEPARTMENT 823 DATA PROCESSING						TOTAL:	641.19

PAGE: 36

BANK: AP

DEPARTMENT: 824 METER READING

PAY DATE RANGE: 11/10/2025 THRU 11/10/2025

BUDGET TO USE: CB-CURRENT BUDGET

VENDOR	NAME	ITEM #	G/L ACCOUNT	NAME	DESCRIPTION	CHECK #	AMOUNT
01-4128	JUSTIN MCMILLAN	I-10-2025	602 4824.00-5705.00	Mileage	: Meter Reader Mileage	126147	167.30
					VENDOR 01-4128	TOTALS	167.30
01-4776	CHRISTOPHER PELKEY	I-10-2025	602 4824.00-5705.00	Mileage	: Meter Reader Mileage	126150	173.60
					VENDOR 01-4776	TOTALS	173.60
				DEPARTMENT 824	METER READING	TOTAL:	340.90

11/10/2025 11:00 AM

REGULAR DEPARTMENT PAYMENT REPORT

PAGE: 37

VENDOR SET: 01 CITY OF CHANUTE

BANK: AP

FUND : 602 UTILITY SERVICES

DEPARTMENT: 825 INFORMATION SERVICE

INVOICE DATE RANGE: 1/01/1998 THRU 99/99/9999

PAY DATE RANGE: 11/10/2025 THRU 11/10/2025

BUDGET TO USE: CB-CURRENT BUDGET

VENDOR	NAME	ITEM #	G/L ACCOUNT	NAME	DESCRIPTION	CHECK #	AMOUNT
01-5053	GTT COMMUNICATIONS, IN I-INV11294181		602 4825.00-5211.00	Telephone Ser: VOIP		126137	42.50
				VENDOR 01-5053	TOTALS		42.50
			DEPARTMENT 825	INFORMATION SERVICE	TOTAL:		42.50
			VENDOR SET 602	UTILITY SERVICES	TOTAL:		2,330.19

11/10/2025 11:00 AM
 VENDOR SET: 01 CITY OF CHANUTE
 FUND : 738 ORIZON - PROJECT BLUESTAR
 DEPARTMENT: 738 ORIZON
 INVOICE DATE RANGE: 1/01/1998 THRU 99/99/9999
 PAY DATE RANGE: 11/10/2025 THRU 11/10/2025
 BUDGET TO USE: CB-CURRENT BUDGET

REGULAR DEPARTMENT PAYMENT REPORT

PAGE: 39
 BANK: AP

VENDOR	NAME	ITEM #	G/L ACCOUNT	NAME	DESCRIPTION	CHECK #	AMOUNT
01-0086	CITY OF CHANUTE	I-01-407	11012025	738 4738.00-3399.00	Other Contrac: Connectivity & Inter	126122	415.00
	PROJ: 220-2016-012	ECONOMIC DEVELOPMENT		Orizon Fiber			
					VENDOR 01-0086	TOTALS	415.00
				DEPARTMENT 738	ORIZON	TOTAL:	415.00
				VENDOR SET 738	ORIZON - PROJECT BLUESTAR	TOTAL:	415.00

11/19/2025 9:41 AM
VENDOR SET: 01 CITY OF CHANUTE
FUND : 101 GENERAL
DEPARTMENT: N/A NON-DEPARTMENTAL
INVOICE DATE RANGE: 1/01/1998 THRU 99/99/9999
PAY DATE RANGE: 11/14/2025 THRU 11/19/2025
BUDGET TO USE: CB-CURRENT BUDGET

REGULAR DEPARTMENT PAYMENT REPORT

VENDOR	NAME	ITEM #	G/L ACCOUNT	NAME	DESCRIPTION	CHECK #	AMOUNT
01-0278	PETTY CASH	I-10449	101 21911.09.000	Building Depo:	Alliance Room - Chri	126259	50.00
01-0278	PETTY CASH	I-10450	101 21911.02.000	Dog Deposits :	Pet Deposit - Likes	126259	25.00
VENDOR 01-0278						TOTALS	75.00
			DEPARTMENT	NON-DEPARTMENTAL	TOTAL:		75.00

11/19/2025 9:41 AM

REGULAR DEPARTMENT PAYMENT REPORT

PAGE: 3

VENDOR SET: 01 CITY OF CHANUTE

BANK: AP

FUND : 101 GENERAL

DEPARTMENT: 121 MUNICIPAL COURT

INVOICE DATE RANGE: 1/01/1998 THRU 99/99/9999

PAY DATE RANGE: 11/14/2025 THRU 11/19/2025

BUDGET TO USE: CB-CURRENT BUDGET

VENDOR	NAME	ITEM #	G/L ACCOUNT	NAME	DESCRIPTION	CHECK #	AMOUNT
01-5718	HEIM LAW OFFICES, P.A. I-BAH1113792		101 4121.00-3221.00	Legal Service: Mun Ct	Legal Fees	126236	2,500.00
						VENDOR 01-5718 TOTALS	2,500.00
DEPARTMENT 121 MUNICIPAL COURT						TOTAL:	2,500.00

11/19/2025 9:41 AM
VENDOR SET: 01 CITY OF CHANUTE
FUND : 101 GENERAL
DEPARTMENT: 131 CITY MANAGER'S OFFICE
INVOICE DATE RANGE: 1/01/1998 THRU 99/99/9999
PAY DATE RANGE: 11/14/2025 THRU 11/19/2025
BUDGET TO USE: CB-CURRENT BUDGET

REGULAR DEPARTMENT PAYMENT REPORT

VENDOR	NAME	ITEM #	G/L ACCOUNT	NAME	DESCRIPTION	CHECK #	AMOUNT
01-0235	MC CARTY'S OFFICE MACH	I-11273-1	101 4131.00-6101.00	Office Suppli:	Calendars/Clips	126250	27.91
VENDOR 01-0235 TOTALS							27.91
01-0257	NAVRAT'S INC.	I-255944-00	101 4131.00-6101.00	Office Suppli:	Copy Paper	126254	49.50
VENDOR 01-0257 TOTALS							49.50
01-5216	COPY PRODUCTS INC	I-569610	101 4131.00-4312.00	R&M:Office Eq:	CM Copier Maint	126219	339.89
VENDOR 01-5216 TOTALS							339.89
DEPARTMENT 131 CITY MANAGER'S OFFICE TOTAL:							417.30

11/19/2025 9:41 AM
 VENDOR SET: 01 CITY OF CHANUTE
 FUND : 101 GENERAL
 DEPARTMENT: 133 HUMAN RESOURCES
 INVOICE DATE RANGE: 1/01/1998 THRU 99/99/9999
 PAY DATE RANGE: 11/14/2025 THRU 11/19/2025
 BUDGET TO USE: CB-CURRENT BUDGET

REGULAR DEPARTMENT PAYMENT REPORT

PAGE: 5
 BANK: AP

VENDOR	NAME	ITEM #	G/L ACCOUNT	NAME	DESCRIPTION	CHECK #	AMOUNT
01-0235	MC CARTY'S OFFICE MACH	I-11273-1	101 4133.00-6101.00	Office Suppli:	Calendars/Clips	126250	27.90
				VENDOR 01-0235	TOTALS		27.90
01-0257	NAVRAT'S INC.	I-255944-00	101 4133.00-6101.00	Office Suppli:	Copy Paper	126254	49.50
				VENDOR 01-0257	TOTALS		49.50
01-5216	COPY PRODUCTS INC	I-569610	101 4133.00-4312.00	R&M:Office Eq:	CM Copier Maint	126219	339.90
				VENDOR 01-5216	TOTALS		339.90
			DEPARTMENT 133	HUMAN RESOURCES	TOTAL:		417.30

11/19/2025 9:41 AM
VENDOR SET: 01 CITY OF CHANUTE
FUND : 101 GENERAL
DEPARTMENT: 141 COMMUNITY DEVELOPMENT
INVOICE DATE RANGE: 1/01/1998 THRU 99/99/9999
PAY DATE RANGE: 11/14/2025 THRU 11/19/2025
BUDGET TO USE: CB-CURRENT BUDGET

REGULAR DEPARTMENT PAYMENT REPORT

VENDOR	NAME	ITEM #	G/L ACCOUNT	NAME	DESCRIPTION	CHECK #	AMOUNT
01-2355	K-W OIL WELL SERVICE,	I-25-06895	101 4141.00-4503.00	Demolition Se: Demo 611 W Sycamore	126240	2,100.00	
01-2355	K-W OIL WELL SERVICE,	I-25-06896	101 4141.00-4503.00	Demolition Se: Res 2025-122 329 W	126240	11,499.00	
01-2355	K-W OIL WELL SERVICE,	I-25-06897	101 4141.00-4503.00	Demolition Se: Res 2025-99 502 W 5	126240	2,200.00	
VENDOR 01-2355						TOTALS	15,799.00
01-4072	AGRICULTURAL ENGINEERI	I-25-116782	101 4141.00-3214.00	Engineering S: Survey Work	126165	2,562.50	
VENDOR 01-4072						TOTALS	2,562.50
01-4774	CARD SERVICES - UMB	I-110225-Mitchell	101 4141.00-5803.00	Dues & Member: Adobe	126174	24.42	
VENDOR 01-4774						TOTALS	24.42
01-5331	T&V PROPERTIES	I-11072025	101 4141.00-3299.00	Other Profess: Mowed & Clean Up - 1	126271	630.00	
VENDOR 01-5331						TOTALS	630.00
				DEPARTMENT 141	COMMUNITY DEVELOPMENT	TOTAL:	19,015.92

11/19/2025 9:41 AM

REGULAR DEPARTMENT PAYMENT REPORT

PAGE: 7

VENDOR SET: 01 CITY OF CHANUTE

BANK: AP

FUND : 101 GENERAL

DEPARTMENT: 171 PUBLIC BUILDINGS/GROUNDS

INVOICE DATE RANGE: 1/01/1998 THRU 99/99/9999

PAY DATE RANGE: 11/14/2025 THRU 11/19/2025

BUDGET TO USE: CB-CURRENT BUDGET

VENDOR	NAME	ITEM #	G/L ACCOUNT	NAME	DESCRIPTION	CHECK #	AMOUNT
01-0086	CITY OF CHANUTE	I-26-0160-03	110725	101 4171.02-4103.00	Natural Gas : Judicial Center - Ga	126187	20.00
01-0086	CITY OF CHANUTE	I-26-0160-03	110725	101 4171.02-4102.00	Water : Judicial Center - Wa	126187	88.48
01-0086	CITY OF CHANUTE	I-26-0160-03	110725	101 4171.02-4101.00	Electric : Judicial Center - El	126187	1,017.69
01-0086	CITY OF CHANUTE	I-26-0160-03	110725	101 4171.02-4105.00	Sewer : Judicial Center - Se	126187	48.73
01-0086	CITY OF CHANUTE	I-26-0160-03	110725	101 4171.02-4104.00	Trash : Judicial Center - Tr	126187	135.90
						VENDOR 01-0086 TOTALS	1,310.80
01-0089	CLEAVERS FARM SUPPLY	I-2510-749657		101 4171.14-6719.00	Other Supplie: Oil	126216	12.58
						VENDOR 01-0089 TOTALS	12.58
01-0143	GALT PEST CONTROL, INC	I-624766		101 4171.01-3399.00	Other Contrac: Pest Control	126230	141.00
01-0143	GALT PEST CONTROL, INC	I-624766		101 4171.08-3399.00	Other Contrac: Pest Control	126230	55.00
						VENDOR 01-0143 TOTALS	196.00
01-4375	CDL	I-W37057		101 4171.01-4313.00	R&M:Plumbing/: HVAC Repairs	126178	1,108.96
						VENDOR 01-4375 TOTALS	1,108.96
01-4774	CARD SERVICES - UMB	I-110225-Follmer		101 4171.14-6565.00	Small Tools &: Sand Paper	126174	41.59
01-4774	CARD SERVICES - UMB	I-110225-Follmer		101 4171.14-6565.00	Small Tools &: Sanding Disc/Hose	126174	52.52
						VENDOR 01-4774 TOTALS	94.11
01-5482	KOWBOY KUTTERS, LLC	I-9380		101 4171.04-4307.00	R&M:Grounds/G: Lawn Treatments	126245	65.00
01-5482	KOWBOY KUTTERS, LLC	I-9380		101 4171.04-4307.00	R&M:Grounds/G: Lawn Treatments	126245	75.00
01-5482	KOWBOY KUTTERS, LLC	I-9380		101 4171.01-4307.00	R&M:Grounds/G: Lawn Treatments	126245	65.00
01-5482	KOWBOY KUTTERS, LLC	I-9380		101 4171.02-3299.00	Other Profess: Lawn Treatments	126245	65.00
						VENDOR 01-5482 TOTALS	270.00
01-9008	CITY OF CHANUTE	I-CY7-MEM BL	110725	101 4171.01-4101.00	Electric : Mem Bldg - Electric	126197	9,880.58
01-9008	CITY OF CHANUTE	I-CY7-MEM BL	110725	101 4171.01-4102.00	Water : Mem Bldg - Water	126197	227.36
01-9008	CITY OF CHANUTE	I-CY7-MEM BL	110725	101 4171.01-4103.00	Natural Gas : Mem Bldg - Gas	126197	60.00
01-9008	CITY OF CHANUTE	I-CY7-MEM BL	110725	101 4171.01-4104.00	Trash : Mem Bldg - Trash	126197	255.53
01-9008	CITY OF CHANUTE	I-CY7-MEM BL	110725	101 4171.01-4105.00	Sewer : Mem Bldg - Sewer	126197	96.35
						VENDOR 01-9008 TOTALS	10,519.82

11/19/2025 9:41 AM
 VENDOR SET: 01 CITY OF CHANUTE
 FUND : 101 GENERAL
 DEPARTMENT: 211 POLICE
 INVOICE DATE RANGE: 1/01/1998 THRU 99/99/9999
 PAY DATE RANGE: 11/14/2025 THRU 11/19/2025
 BUDGET TO USE: CB-CURRENT BUDGET

REGULAR DEPARTMENT PAYMENT REPORT

PAGE: 9
 BANK: AP

VENDOR	NAME	ITEM #	G/L ACCOUNT	NAME	DESCRIPTION	CHECK #	AMOUNT
01-0142	GALL'S LLC	I-032987400	101 4211.05-6575.00	Uniforms	: PD #117 Uniforms	126229	452.25
						VENDOR 01-0142 TOTALS	452.25
01-0268	O'REILLY AUTOMOTIVE ST	I-0136-382451	101 4211.05-4311.00	R&M:Motor Veh:	PD #382 Headlight/Fo	126257	23.03
						VENDOR 01-0268 TOTALS	23.03
01-0325	TOP HAT CLEANERS	I-1837	101 4211.05-3304.00	Laundry / Dry:	PD Uniform Cleaning	126273	79.50
						VENDOR 01-0325 TOTALS	79.50
01-0337	UTILITY CONSULTANTS, I	I-38186	101 4211.05-3212.00	Employee Drug:	Pre Employment Testi	126278	80.00
						VENDOR 01-0337 TOTALS	80.00
01-0642	G & W FOODS, INC.	I-0021	101 4211.05-6599.00	Miscellaneous:	Cups	126228	2.49
						VENDOR 01-0642 TOTALS	2.49
01-4774	CARD SERVICES - UMB	I-110225-Mitchell	101 4211.05-6102.00	Computer Supp:	Adobe	126174	97.68
01-4774	CARD SERVICES - UMB	I-110225-Pefley	101 4211.01-5707.00	Travel Expens:	PD Meals	126174	23.81
01-4774	CARD SERVICES - UMB	I-110225-Pefley	101 4211.05-6599.00	Miscellaneous:	PD Halloween	126174	150.93
01-4774	CARD SERVICES - UMB	I-110225-Pefley	101 4211.05-6599.00	Miscellaneous:	PD K-9 Dog Food	126174	429.90
01-4774	CARD SERVICES - UMB	I-110225-Umbarger	101 4211.04-5704.00	Meeting Expen:	PD Training Motel #1	126174	130.55
						VENDOR 01-4774 TOTALS	832.87
01-5216	COPY PRODUCTS INC	I-570007	101 4211.05-4312.00	R&M:Office Eq:	PD Copier Maint	126219	224.11
						VENDOR 01-5216 TOTALS	224.11
01-9012	CITY OF CHANUTE	I-CY7-MBLDG 110725	101 4211.05-4101.00	Electric	: Range - Electric	126200	26.24
01-9012	CITY OF CHANUTE	I-CY7-MBLDG 110725	101 4211.05-4104.00	Trash	: Range - Trash	126200	49.55
						VENDOR 01-9012 TOTALS	75.79
						DEPARTMENT 211 POLICE TOTAL:	1,770.04

PAGE: 10
BANK: AP

PAGE: 11
BANK: AP

VENDOR	NAME	ITEM #	G/L ACCOUNT	NAME	DESCRIPTION	CHECK #	AMOUNT
01-0080	CHANUTE TRIBUNE	I-10312025	101 4221.01-5404.00	Legal Publica:	Ord S-582 - 2026 Fir	126181	115.00
01-0080	CHANUTE TRIBUNE	I-10312025	101 4221.01-5404.00	Legal Publica:	Ord S-583- 2026 Fire	126181	115.00
01-0080	CHANUTE TRIBUNE	I-10312025	101 4221.01-5404.00	Legal Publica:	Ord S-584- 2026 Fire	126181	115.00
					VENDOR 01-0080	TOTALS	345.00
01-4149	ED M FELD EQUIPMENT CO	I-INV17651	101 4221.02-4329.00	R&M:Other Mac:	SCBA Repair	126222	156.80
					VENDOR 01-4149	TOTALS	156.80
01-4530	PROFESSIONAL CLEANING	I-157200	101 4221.02-4329.00	R&M:Other Mac:	155 gals Soap	126261	395.00
					VENDOR 01-4530	TOTALS	395.00
01-4774	CARD SERVICES - UMB	I-110225-Mitchell	101 4221.01-5803.00	Dues & Member:	Sams Club Renewal	126174	110.00
01-4774	CARD SERVICES - UMB	I-110225-Mitchell	101 4221.02-3399.00	Other Contrac:	Cable	126174	46.79
01-4774	CARD SERVICES - UMB	I-110225-Mitchell	101 4221.01-3399.00	Other Contrac:	Adobe	126174	24.56
01-4774	CARD SERVICES - UMB	I-110225-Mitchell	101 4221.01-6101.00	Office Suppli:	Chat GPT Subscriptio	126174	20.00
01-4774	CARD SERVICES - UMB	I-110225-Mitchell	101 4221.01-3399.00	Other Contrac:	Acrobat Pro	126174	18.71
01-4774	CARD SERVICES - UMB	I-110225-Mitchell	101 4221.02-4329.00	R&M:Other Mac:	Extractor Repair	126174	107.74
01-4774	CARD SERVICES - UMB	I-110225-Small	101 4221.01-6101.00	Office Suppli:	Summary AI for Train	126174	12.83
01-4774	CARD SERVICES - UMB	I-110225-Small	101 4221.01-6101.00	Office Suppli:	Hazmat FF Training M	126174	6.95
01-4774	CARD SERVICES - UMB	I-110225-Small	101 4221.02-6536.00	Janitorial & :	Cleaning Supplies/Va	126174	164.48
01-4774	CARD SERVICES - UMB	I-110225-Small	101 4221.02-6508.00	Clothing and :	Station Boots	126174	106.34
01-4774	CARD SERVICES - UMB	I-110225-Small	101 4221.02-6513.00	Educational & :	Street Smart Exercis	126174	159.09
01-4774	CARD SERVICES - UMB	I-110225-Small	101 4221.01-6101.00	Office Suppli:	Canva Subscription	126174	15.00
01-4774	CARD SERVICES - UMB	I-110225-Small	101 4221.02-6508.00	Clothing and :	Station Boots	126174	267.78
01-4774	CARD SERVICES - UMB	I-110225-Small	101 4221.02-3399.00	Other Contrac:	Starlink	126174	34.45
01-4774	CARD SERVICES - UMB	I-110225-Small	101 4221.02-6536.00	Janitorial & :	Dryer Lint Screen	126174	23.45
01-4774	CARD SERVICES - UMB	I-110225-Small	101 4221.02-6536.00	Janitorial & :	Dishwasher Pods	126174	21.44
01-4774	CARD SERVICES - UMB	I-110225-Small	101 4221.02-6536.00	Janitorial & :	Household Supplies	126174	128.65
01-4774	CARD SERVICES - UMB	I-110225-Small	101 4221.02-6513.00	Educational & :	EMS CLE Training Cla	126174	91.15
01-4774	CARD SERVICES - UMB	I-110225-Small	101 4221.02-6508.00	Clothing and :	Station Boots	126174	267.78
01-4774	CARD SERVICES - UMB	I-110225-Small	101 4221.02-6107.00	Small Items o:	Equipment Storage Ta	126174	119.14
					VENDOR 01-4774	TOTALS	1,746.33
01-5257	LAKELAND OFFICE SYSTEM	I-IN685076	101 4221.02-3399.00	Other Contrac:	FD Copier Maint	126246	77.23
					VENDOR 01-5257	TOTALS	77.23

11/19/2025 9:41 AM

REGULAR DEPARTMENT PAYMENT REPORT

PAGE: 13

VENDOR SET: 01 CITY OF CHANUTE

BANK: AP

FUND : 101 GENERAL

DEPARTMENT: 231 ANIMAL CONTROL

INVOICE DATE RANGE: 1/01/1998 THRU 99/99/9999

PAY DATE RANGE: 11/14/2025 THRU 11/19/2025

BUDGET TO USE: CB-CURRENT BUDGET

VENDOR	NAME	ITEM #	G/L ACCOUNT	NAME	DESCRIPTION	CHECK #	AMOUNT
01-0325	TOP HAT CLEANERS	I-1836	101 4231.00-3304.00	Laundry / Dry:	ACO Uniform Cleaning	126273	96.25
						VENDOR 01-0325 TOTALS	96.25
01-4774	CARD SERVICES - UMB	I-110225-Pefley	101 4231.00-6599.00	Miscellaneous:	ACO - Retirement #62	126174	81.32
						VENDOR 01-4774 TOTALS	81.32
01-9012	CITY OF CHANUTE	I-CY7-MBLDG 110725	101 4231.00-4101.00	Electric	: ACO - Electric	126200	217.30
01-9012	CITY OF CHANUTE	I-CY7-MBLDG 110725	101 4231.00-4102.00	Water	: ACO - Water	126200	43.60
01-9012	CITY OF CHANUTE	I-CY7-MBLDG 110725	101 4231.00-4104.00	Trash	: ACO - Trash	126200	49.55
01-9012	CITY OF CHANUTE	I-CY7-MBLDG 110725	101 4231.00-4105.00	Sewer	: ACO - Sewer	126200	38.30
						VENDOR 01-9012 TOTALS	348.75
DEPARTMENT 231 ANIMAL CONTROL						TOTAL:	526.32

FUND : 101 GENERAL

DEPARTMENT: 232 CIVIL DEFENSE

INVOICE DATE RANGE: 1/01/1998 THRU 99/99/9999

PAY DATE RANGE: 11/14/2025 THRU 11/19/2025

BUDGET TO USE: CB-CURRENT BUDGET

VENDOR	NAME	ITEM #	G/L ACCOUNT	NAME	DESCRIPTION	CHECK #	AMOUNT
01-9021	CITY OF CHANUTE	I-CY7-SIRENS	110725	101 4232.00-4101.00	Electric : Sirens	126206	188.69
					VENDOR 01-9021	TOTALS	188.69
				DEPARTMENT 232	CIVIL DEFENSE	TOTAL:	188.69

11/19/2025 9:41 AM

REGULAR DEPARTMENT PAYMENT REPORT

PAGE: 15

VENDOR SET: 01 CITY OF CHANUTE

BANK: AP

FUND : 101 GENERAL

DEPARTMENT: 311 STREETS AND ROADS

INVOICE DATE RANGE: 1/01/1998 THRU 99/99/9999

PAY DATE RANGE: 11/14/2025 THRU 11/19/2025

BUDGET TO USE: CB-CURRENT BUDGET

VENDOR	NAME	ITEM #	G/L ACCOUNT	NAME	DESCRIPTION	CHECK #	AMOUNT
01-0084	CITY OF CHANUTE	I-01-053 11012025	101 4311.01-6599.00	Miscellaneous: Bulk Water	126185	28.00	
01-0084	CITY OF CHANUTE	I-01-053 11012025	101 4311.01-4107.00	Landfill Fees: Landfill Fees	126185	1,837.50	
VENDOR 01-0084 TOTALS						1,865.50	
01-0089	CLEAVERS FARM SUPPLY	I-2510-748357	101 4311.01-6705.00	Machinery and: Bolts	126216	19.46	
01-0089	CLEAVERS FARM SUPPLY	I-2510-749492	101 4311.01-6705.00	Machinery and: Paint/Terminal #586	126216	15.82	
VENDOR 01-0089 TOTALS						35.28	
01-0715	CLEAN UNIFORM COMPANY	I-22313625	101 4311.01-4409.00	Other Rentals: Uniforms - Street	126215	23.65	
01-0715	CLEAN UNIFORM COMPANY	I-22315438	101 4311.01-4409.00	Other Rentals: Uniforms - Street	126215	23.65	
VENDOR 01-0715 TOTALS						47.30	
01-4774	CARD SERVICES - UMB	I-110225-Vining	101 4311.01-6705.00	Machinery and: Jack	126174	44.03	
VENDOR 01-4774 TOTALS						44.03	
01-4987	WHITAKER AGGREGATES, I	I-66466	101 4311.01-6616.00	Rock : Rock	126282	65.77	
VENDOR 01-4987 TOTALS						65.77	
01-5651	KANEQUIP INC	I-01R100328-10	101 4311.01-4403.00	Rental/Lease : Tractor Rental Sept	126241	605.20	
VENDOR 01-5651 TOTALS						605.20	
01-9007	CITY OF CHANUTE	I-CY7-COMPLX 110725	101 4311.04-4101.00	Electric : Street Lights	126196	6,967.66	
VENDOR 01-9007 TOTALS						6,967.66	
DEPARTMENT 311 STREETS AND ROADS TOTAL:						9,630.74	

PAGE: 16
BANK: AP

11/19/2025 9:41 AM
 VENDOR SET: 01 CITY OF CHANUTE
 FUND : 101 GENERAL
 DEPARTMENT: 331 AIRPORT
 INVOICE DATE RANGE: 1/01/1998 THRU 99/99/9999
 PAY DATE RANGE: 11/14/2025 THRU 11/19/2025
 BUDGET TO USE: CB-CURRENT BUDGET

REGULAR DEPARTMENT PAYMENT REPORT

PAGE: 17
 BANK: AP

VENDOR	NAME	ITEM #	G/L ACCOUNT	NAME	DESCRIPTION	CHECK #	AMOUNT
01-0089	CLEAVERS FARM SUPPLY	I-2511-756196	101 4331.00-4302.00	R&M:Building	: Airport Shelving	126216	145.63
						VENDOR 01-0089 TOTALS	145.63
01-4001	LANG DIESEL, INC	I-P45819	101 4331.00-4329.00	R&M:Other Mac:	Wheel Nut on Lawnmow	126247	26.39
						VENDOR 01-4001 TOTALS	26.39
01-4481	CITY OF CHANUTE	I-CY6-AIRPRT 110725	101 4331.00-4101.00	Electric	: Airport - Electric	126189	365.74
01-4481	CITY OF CHANUTE	I-CY6-AIRPRT 110725	101 4331.00-4102.00	Water	: Airport - Water	126189	154.19
01-4481	CITY OF CHANUTE	I-CY6-AIRPRT 110725	101 4331.00-4103.00	Natural Gas	: Airport - Gas	126189	40.00
						VENDOR 01-4481 TOTALS	559.93
01-4774	CARD SERVICES - UMB	I-110225-Follmer	101 4331.00-3399.00	Other Contrac:	YouTube TV @ Airport	126174	90.87
01-4774	CARD SERVICES - UMB	I-110225-Follmer	101 4331.00-3399.00	Other Contrac:	KDHE/AST Permit	126174	22.50
01-4774	CARD SERVICES - UMB	I-110225-Follmer	101 4331.00-6599.00	Miscellaneous:	Airport Lunch	126174	93.38
01-4774	CARD SERVICES - UMB	I-110225-Follmer	101 4331.00-3399.00	Other Contrac:	Membership	126174	139.00
01-4774	CARD SERVICES - UMB	I-110225-Follmer	101 4331.00-4329.00	R&M:Other Mac:	Oil/Stabilizer	126174	63.61
01-4774	CARD SERVICES - UMB	I-110225-Follmer	101 4331.00-6599.00	Miscellaneous:	Straps/Ties/Wrap-It/	126174	99.58
01-4774	CARD SERVICES - UMB	I-110225-Follmer	101 4331.00-6599.00	Miscellaneous:	Clean Bite Glass	126174	52.55
01-4774	CARD SERVICES - UMB	I-110225-Follmer	101 4331.00-4329.00	R&M:Other Mac:	Bake Element	126174	47.88
01-4774	CARD SERVICES - UMB	I-110225-Follmer	101 4331.00-3399.00	Other Contrac:	YouTube TV @ Airport	126174	90.87
						VENDOR 01-4774 TOTALS	700.24
01-9006	CITY OF CHANUTE	I-CY7-AIRPRT 110725	101 4331.00-4101.00	Electric	: Airport - Electric	126195	376.20
01-9006	CITY OF CHANUTE	I-CY7-AIRPRT 110725	101 4331.00-4102.00	Water	: Airport - Water	126195	36.12
01-9006	CITY OF CHANUTE	I-CY7-AIRPRT 110725	101 4331.00-4103.00	Natural Gas	: Airport - Gas	126195	40.00
01-9006	CITY OF CHANUTE	I-CY7-AIRPRT 110725	101 4331.00-4104.00	Trash	: Airport - Trash	126195	81.09
						VENDOR 01-9006 TOTALS	533.41
DEPARTMENT 331 AIRPORT						TOTAL:	1,965.60

11/19/2025 9:41 AM
VENDOR SET: 01 CITY OF CHANUTE
FUND : 101 GENERAL
DEPARTMENT: 511 PARKS
INVOICE DATE RANGE: 1/01/1998 THRU 99/99/9999
PAY DATE RANGE: 11/14/2025 THRU 11/19/2025
BUDGET TO USE: CB-CURRENT BUDGET

REGULAR DEPARTMENT PAYMENT REPORT

VENDOR	NAME	ITEM #	G/L ACCOUNT	NAME	DESCRIPTION	CHECK #	AMOUNT
01-0084	CITY OF CHANUTE	I-01-046 110125	101 4511.00-4107.00	Landfill Fees:	Parks Landfill Fees	126185	197.13
						VENDOR 01-0084 TOTALS	197.13
01-0089	CLEAVERS FARM SUPPLY	I-2511-753548	101 4511.00-6536.00	Janitorial & :	Bolts/Fabuloso/Water	126216	21.21
						VENDOR 01-0089 TOTALS	21.21
01-4001	LANG DIESEL, INC	I-P45762	101 4511.00-6705.00	Machinery and:	Lanyard Pin	126247	25.72
						VENDOR 01-4001 TOTALS	25.72
01-4774	CARD SERVICES - UMB	I-110225-Follmer	101 4511.00-6699.00	Misc Building:	Centerifugals	126174	569.40
						VENDOR 01-4774 TOTALS	569.40
01-9003	CITY OF CHANUTE	I-CY6-Parks 110725	101 4511.00-4101.00	Electric	: Electric	126192	174.70
01-9003	CITY OF CHANUTE	I-CY6-Parks 110725	101 4511.00-4102.00	Water	: Water	126192	30.00
						VENDOR 01-9003 TOTALS	204.70
01-9009	CITY OF CHANUTE	I-CY7-Parks 110725	101 4511.00-4101.00	Electric	: Electric	126198	1,670.27
01-9009	CITY OF CHANUTE	I-CY7-Parks 110725	101 4511.00-4102.00	Water	: Water	126198	898.80
01-9009	CITY OF CHANUTE	I-CY7-Parks 110725	101 4511.00-4103.00	Natural Gas	: Gas	126198	20.00
01-9009	CITY OF CHANUTE	I-CY7-Parks 110725	101 4511.00-4104.00	Trash	: Trash	126198	113.48
01-9009	CITY OF CHANUTE	I-CY7-Parks 110725	101 4511.00-4105.00	Sewer	: Sewer	126198	190.58
01-9009	CITY OF CHANUTE	I-CY7-Parks 110725	101 4511.00-4107.00	Landfill Fees:	Landfill	126198	0.72
						VENDOR 01-9009 TOTALS	2,893.85
						DEPARTMENT 511 PARKS TOTAL:	3,912.01

11/19/2025 9:41 AM

REGULAR DEPARTMENT PAYMENT REPORT

PAGE: 19

VENDOR SET: 01 CITY OF CHANUTE

BANK: AP

FUND : 101 GENERAL

DEPARTMENT: 512 SWIMMING POOL

INVOICE DATE RANGE: 1/01/1998 THRU 99/99/9999

PAY DATE RANGE: 11/14/2025 THRU 11/19/2025

BUDGET TO USE: CB-CURRENT BUDGET

VENDOR	NAME	ITEM #	G/L ACCOUNT	NAME	DESCRIPTION	CHECK #	AMOUNT
01-9014	CITY OF CHANUTE	I-CY6-Pool 110725	101 4512.00-4101.00	Electric	: Electric	126201	343.21
VENDOR 01-9014						TOTALS	343.21
DEPARTMENT 512 SWIMMING POOL						TOTAL:	343.21

VENDOR	NAME	ITEM #	G/L ACCOUNT	NAME	DESCRIPTION	CHECK #	AMOUNT
01-4774	CARD SERVICES - UMB	I-110225-Ortiz	101 4513.00-6800.00	Baseball & So:	Awards	126174	263.99
				VENDOR 01-4774	TOTALS		263.99
01-9029	CITY OF CHANUTE	I-CY7-BALLDM 110725	101 4513.00-4101.00	Electric	: Ballfields - Electri	126211	403.32
01-9029	CITY OF CHANUTE	I-CY7-BALLDM 110725	101 4513.00-4102.00	Water	: Ballfields - Water	126211	831.80
01-9029	CITY OF CHANUTE	I-CY7-BALLDM 110725	101 4513.00-4107.00	Landfill Fees:	Ballfields - Landfil	126211	81.09
01-9029	CITY OF CHANUTE	I-CY7-BALLDM 110725	101 4513.00-4105.00	Sewer	: Ballfields - Landfil	126211	83.33
				VENDOR 01-9029	TOTALS		1,399.54
				DEPARTMENT 513	BASEBALL/SOFTBALL PARKS	TOTAL:	1,663.53

11/19/2025 9:41 AM
 VENDOR SET: 01 CITY OF CHANUTE
 FUND : 101 GENERAL
 DEPARTMENT: 516 GOLF COURSE
 INVOICE DATE RANGE: 1/01/1998 THRU 99/99/9999
 PAY DATE RANGE: 11/14/2025 THRU 11/19/2025
 BUDGET TO USE: CB-CURRENT BUDGET

REGULAR DEPARTMENT PAYMENT REPORT

PAGE: 21
 BANK: AP

VENDOR	NAME	ITEM #	G/L ACCOUNT	NAME	DESCRIPTION	CHECK #	AMOUNT
01-0089	CLEAVERS FARM SUPPLY	I-2511-751518	101 4516.00-6603.00	Cement and Co: Rebar		126216	1,111.50
	PROJ: 225-2024-001	GOLF COURSE		Golf Course Parking Lot -2024			
01-0089	CLEAVERS FARM SUPPLY	I-2511-753249	101 4516.00-6603.00	Cement and Co: Foam Sealant		126216	10.06
	PROJ: 225-2024-001	GOLF COURSE		Golf Course Parking Lot -2024			
VENDOR 01-0089 TOTALS							1,121.56
01-0143	GALT PEST CONTROL, INC	I-624767	101 4516.00-3399.00	Other Contrac: Pest Control - Golf		126230	73.00
VENDOR 01-0143 TOTALS							73.00
01-0267	O'BRIEN ROCK CO., INC.	I-142799	101 4516.00-6603.00	Cement and Co: Concrete		126256	2,780.00
	PROJ: 225-2024-001	GOLF COURSE		Golf Course Parking Lot -2024			
VENDOR 01-0267 TOTALS							2,780.00
01-0411	HUGO'S INDUSTRIAL SUPP	I-343964	101 4516.00-6536.00	Janitorial & : Toilet Paper		126237	99.97
VENDOR 01-0411 TOTALS							99.97
01-4226	JOHN DEERE FINANCIAL	C-6724883	101 4516.00-6705.00	Machinery and: Blades - Returned		126239	354.20
01-4226	JOHN DEERE FINANCIAL	I-6724883	101 4516.00-6705.00	Machinery and: Blades		126239	354.20
01-4226	JOHN DEERE FINANCIAL	I-6737009	101 4516.00-6705.00	Machinery and: Blades		126239	179.60
01-4226	JOHN DEERE FINANCIAL	I-6740293	101 4516.00-4329.00	R&M:Other Mac: Repair Reels		126239	1,460.67
VENDOR 01-4226 TOTALS							1,640.27
01-4350	R & R PRODUCTS	I-CD3091891	101 4516.00-6714.00	Tires, Tubes,: Cart Tires		126262	141.77
VENDOR 01-4350 TOTALS							141.77
01-4774	CARD SERVICES - UMB	I-110225-Follmer	101 4516.00-6699.00	Misc Building: Ramps		126174	98.53
01-4774	CARD SERVICES - UMB	I-110225-Waggoner	101 4516.00-6528.00	Food : Concessions		126174	19.98
01-4774	CARD SERVICES - UMB	I-110225-Waggoner	101 4516.00-6528.00	Food : Concessions		126174	53.50
01-4774	CARD SERVICES - UMB	I-110225-Waggoner	101 4516.00-3399.00	Other Contrac: DirectTV Oct 2025		126174	308.38
01-4774	CARD SERVICES - UMB	I-110225-Waggoner	101 4516.00-6705.00	Machinery and: Couplers		126174	32.84
01-4774	CARD SERVICES - UMB	I-110225-Waggoner	101 4516.00-6528.00	Food : Concessions		126174	39.98
01-4774	CARD SERVICES - UMB	I-110225-Waggoner	101 4516.00-6528.00	Food : Concessions		126174	23.39
01-4774	CARD SERVICES - UMB	I-110225-Waggoner	101 4516.00-6705.00	Machinery and: Quick Connect Nipple		126174	54.64
01-4774	CARD SERVICES - UMB	I-110225-Waggoner	101 4516.00-6528.00	Food : Concessions		126174	263.17

11/19/2025 9:41 AM

VENDOR SET: 01 CITY OF CHANUTE

FUND : 101 GENERAL

DEPARTMENT: 521 TREE PROGRAM

INVOICE DATE RANGE: 1/01/1998 THRU 99/99/9999

PAY DATE RANGE: 11/14/2025 THRU 11/19/2025

BUDGET TO USE: CB-CURRENT BUDGET

REGULAR DEPARTMENT PAYMENT REPORT

PAGE: 23

BANK: AP

VENDOR	NAME	ITEM #	G/L ACCOUNT	NAME	DESCRIPTION	CHECK #	AMOUNT
01-0822	TRAVELING TREES	I-901500	101 4521.00-3399.00	Other Contrac:	Trade-A-Tree/M. Koes	126275	2,450.00
01-0822	TRAVELING TREES	I-931699	101 4521.00-3399.00	Other Contrac:	Trade-A-Tree/S. McKi	126275	2,450.00
						VENDOR 01-0822 TOTALS	4,900.00
						DEPARTMENT 521 TREE PROGRAM TOTAL:	4,900.00
						VENDOR SET 101 GENERAL TOTAL:	80,660.32

VENDOR SET: 01 CITY OF CHANUTE
FUND : 120 SALES TAX .25% -CRDA/CITY
DEPARTMENT: 611 SALES TAX .25%-CRDA/CITY
INVOICE DATE RANGE: 1/01/1998 THRU 99/99/9999
PAY DATE RANGE: 11/14/2025 THRU 11/19/2025
BUDGET TO USE: CB-CURRENT BUDGET

VENDOR	NAME	ITEM #	G/L ACCOUNT	NAME	DESCRIPTION	CHECK #	AMOUNT
01-2503	GLASS DEPOT, LLC	I-3622-755748	120 4611.00-3299.00	Other Profess:	Courthouse Doors	126232	11,135.05
	PROJ: 208-2024-007	PUBLIC BLDGS/GROUNDS		Courthouse Building			
					VENDOR 01-2503	TOTALS	11,135.05
				DEPARTMENT 611	SALES TAX .25%-CRDA/CITY	TOTAL:	11,135.05
				VENDOR SET 120	SALES TAX .25% -CRDA/CITY	TOTAL:	11,135.05

11/19/2025 9:41 AM
 VENDOR SET: 01 CITY OF CHANUTE
 FUND : 215 CITY EMPLOYEE BENEFITS
 DEPARTMENT: 199 EMPLOYEE BENEFITS
 INVOICE DATE RANGE: 1/01/1998 THRU 99/99/9999
 PAY DATE RANGE: 11/14/2025 THRU 11/19/2025
 BUDGET TO USE: CB-CURRENT BUDGET

REGULAR DEPARTMENT PAYMENT REPORT

PAGE: 25
 BANK: AP

VENDOR	NAME	ITEM #	G/L ACCOUNT	NAME	DESCRIPTION	CHECK #	AMOUNT		
01-0058	CARDINAL DRUG STORE	I-790 10312025	215 4199.00-2107.00	Other Employee:	Employee Flu Immuniz	126175	94.40		
					VENDOR 01-0058	TOTALS	94.40		
01-3093	COMPLIANCE ONE	I-334249	215 4199.00-2107.00	Other Employee:	Employee Assistance	126218	242.55		
					VENDOR 01-3093	TOTALS	242.55		
						DEPARTMENT 199	EMPLOYEE BENEFITS	TOTAL:	336.95
						VENDOR SET 215	CITY EMPLOYEE BENEFITS	TOTAL:	336.95

11/19/2025 9:41 AM
VENDOR SET: 01 CITY OF CHANUTE
FUND : 217 RECREATION COMPLEX
DEPARTMENT: 550 RECREATION COMMISSION
INVOICE DATE RANGE: 1/01/1998 THRU 99/99/9999
PAY DATE RANGE: 11/14/2025 THRU 11/19/2025
BUDGET TO USE: CB-CURRENT BUDGET

REGULAR DEPARTMENT PAYMENT REPORT

VENDOR	NAME	ITEM #	G/L ACCOUNT	NAME	DESCRIPTION	CHECK #	AMOUNT
01-5512	UPLINK LLC	I-26647	217 4550.00-3399.00	Other Contrac	Rec Center Fire Alar	126277	90.00
						VENDOR 01-5512 TOTALS	90.00
01-5798	AMERICAN DREAM ROOFING	I-69	217 4550.00-6699.00	Misc Building	Maint on Rec Center	126167	3,434.10
						VENDOR 01-5798 TOTALS	3,434.10
01-9017	CITY OF CHANUTE	I-CY6-POOL2 110725	217 4550.00-4103.00	Natural Gas	: Rec - Gas	126203	60.00
01-9017	CITY OF CHANUTE	I-CY6-POOL2 110725	217 4550.00-4102.00	Water	: Rec - Water	126203	118.48
01-9017	CITY OF CHANUTE	I-CY6-POOL2 110725	217 4550.00-4101.00	Electric	: Rec - Electric	126203	1,071.53
01-9017	CITY OF CHANUTE	I-CY6-POOL2 110725	217 4550.00-4105.00	Sewer	: Rec - Sewer	126203	83.87
01-9017	CITY OF CHANUTE	I-CY6-POOL2 110725	217 4550.00-4104.00	Trash	: Rec - Trash	126203	107.36
						VENDOR 01-9017 TOTALS	1,441.24
						DEPARTMENT 550 RECREATION COMMISSION TOTAL:	4,965.34
						VENDOR SET 217 RECREATION COMPLEX TOTAL:	4,965.34

11/19/2025 9:41 AM

REGULAR DEPARTMENT PAYMENT REPORT

PAGE: 27

VENDOR SET: 01 CITY OF CHANUTE

BANK: AP

FUND : 223 TOURISM & CONVENTION

DEPARTMENT: 641 TOURISM SERVICES

INVOICE DATE RANGE: 1/01/1998 THRU 99/99/9999

PAY DATE RANGE: 11/14/2025 THRU 11/19/2025

BUDGET TO USE: CB-CURRENT BUDGET

VENDOR	NAME	ITEM #	G/L ACCOUNT	NAME	DESCRIPTION	CHECK #	AMOUNT
01-0070	CHANUTE CHAMBER	I-16537	223 4641.00-3399.00	Other Contrac:	4th Qtr Contribution	126180	12,500.00
01-0070	CHANUTE CHAMBER	I-16537	223 4641.00-3299.00	Other Profess:	Grants	126180	1,300.00
						VENDOR 01-0070 TOTALS	13,800.00
						DEPARTMENT 641 TOURISM SERVICES TOTAL:	13,800.00
						VENDOR SET 223 TOURISM & CONVENTION TOTAL:	13,800.00

PAGE: 28

BANK: AP

FUND : 311 CAPITAL IMPROVEMENT #1

DEPARTMENT: 410 ELECTRIC PROJECTS

INVOICE DATE RANGE: 1/01/1998 THRU 99/99/9999

PAY DATE RANGE: 11/14/2025 THRU 11/19/2025

BUDGET TO USE: CB-CURRENT BUDGET

VENDOR	NAME	ITEM #	G/L ACCOUNT	NAME	DESCRIPTION	CHECK #	AMOUNT
01-5817	HIGH PLAINS POWER SYST I-998		311 4410.00-7310.00	Electric Proj:	Down Payment 3 Gener	000592	375,000.00
					VENDOR 01-5817	TOTALS	375,000.00

DEPARTMENT 410	ELECTRIC PROJECTS	TOTAL:	375,000.00
----------------	-------------------	--------	------------

VENDOR SET 311	CAPITAL IMPROVEMENT #1	TOTAL:	375,000.00
----------------	------------------------	--------	------------

11/19/2025 9:41 AM
VENDOR SET: 01 CITY OF CHANUTE
FUND : 501 ELECTRIC UTILITY
DEPARTMENT: N/A NON-DEPARTMENTAL
INVOICE DATE RANGE: 1/01/1998 THRU 99/99/9999
PAY DATE RANGE: 11/14/2025 THRU 11/19/2025
BUDGET TO USE: CB-CURRENT BUDGET

REGULAR DEPARTMENT PAYMENT REPORT

VENDOR	NAME	ITEM #	G/L ACCOUNT	NAME	DESCRIPTION	CHECK #	AMOUNT
01-5818	BELINDA K MCFADDEN	I-12-1270-01	501 3000.00-7101.00	Residential S:	Level Pay Credit	126251	315.08
VENDOR 01-5818						TOTALS	315.08
DEPARTMENT				NON-DEPARTMENTAL	TOTAL:	315.08	

11/19/2025 9:41 AM

REGULAR DEPARTMENT PAYMENT REPORT

PAGE: 31

VENDOR SET: 01 CITY OF CHANUTE

BANK: AP

FUND : 501 ELECTRIC UTILITY

DEPARTMENT: 411 ELECTRIC PRODUCTION

INVOICE DATE RANGE: 1/01/1998 THRU 99/99/9999

PAY DATE RANGE: 11/14/2025 THRU 11/19/2025

BUDGET TO USE: CB-CURRENT BUDGET

VENDOR	NAME	ITEM #	G/L ACCOUNT	NAME	DESCRIPTION	CHECK #	AMOUNT
01-3660	AT&T	I-2354248013	501 4411.01-5211.00	Telephone Ser:	SEG Meter Comm - Iol	126169	171.76
01-3660	AT&T	I-2354248013	501 4411.01-5211.00	Telephone Ser:	SEG Meter Comm - Sab	126169	171.76
01-3660	AT&T	I-2354248013	501 4411.01-5211.00	Telephone Ser:	SEG Meter Comm - Cha	126169	343.49
	PROJ: 510-2016-001	ELECTRIC PROJECTS		FECA Reimbursement			
01-3660	AT&T	I-2354248013	501 4411.01-5211.00	Telephone Ser:	SEG Meter Comm - Fre	126169	171.76
01-3660	AT&T	I-2354248013	501 4411.01-5211.00	Telephone Ser:	SEG Meter Comm - Cen	126169	171.76
01-3660	AT&T	I-2354248013	501 4411.01-5211.00	Telephone Ser:	SEG Meter Comm - Arc	126169	171.76
01-3660	AT&T	I-2354248013	501 4411.01-5211.00	Telephone Ser:	SEG Meter Comm - Axt	126169	171.76
01-3660	AT&T	I-2354248013	501 4411.01-5211.00	Telephone Ser:	Westar Meter Comm -	126169	198.25
01-3660	AT&T	I-2354248013	501 4411.01-5211.00	Telephone Ser:	Westar Meter Comm -	126169	198.25
01-3660	AT&T	I-2354248013	501 4411.01-5211.00	Telephone Ser:	Westar Meter Comm -	126169	198.29
	PROJ: 510-2016-001	ELECTRIC PROJECTS		FECA Reimbursement			
01-3660	AT&T	I-2354248013	501 4411.01-5211.00	Telephone Ser:	Westar Meter Comm -	126169	198.25
01-3660	AT&T	I-2354248013	501 4411.01-5211.00	Telephone Ser:	Westar Meter Comm -	126169	198.25
01-3660	AT&T	I-2354248013	501 4411.01-5211.00	Telephone Ser:	Westar Meter Comm -	126169	198.25
01-3660	AT&T	I-2354248013	501 4411.01-5211.00	Telephone Ser:	Westar Meter Comm -	126169	198.25
						VENDOR 01-3660 TOTALS	2,761.84
01-4774	CARD SERVICES - UMB	I-110225 Hamilton	501 4411.01-6705.00	Machinery and:	Ram Meter	126174	127.08
01-4774	CARD SERVICES - UMB	I-110225 Hamilton	501 4411.01-6705.00	Machinery and:	Flow Meter	126174	114.94
01-4774	CARD SERVICES - UMB	I-110225 Westerman	501 4411.01-4313.00	R&M:Plumbing/:	A/C Repair (E-House)	126174	141.00
01-4774	CARD SERVICES - UMB	I-110225 Westerman	501 4411.01-6599.00	Miscellaneous:	Gas - Truck #579	126174	84.14
01-4774	CARD SERVICES - UMB	I-110225 Westerman	501 4411.01-5206.00	Parcel Delive:	UPS - Shipping	126174	38.38
01-4774	CARD SERVICES - UMB	I-110225 Westerman	501 4411.01-5206.00	Parcel Delive:	UPS - Shipping	126174	3.70
01-4774	CARD SERVICES - UMB	I-110225 Westerman	501 4411.01-6101.00	Office Suppli:	Computer Monitors	126174	216.81
01-4774	CARD SERVICES - UMB	I-110225 Westerman	501 4411.01-5302.00	Registration :	AST Permit - Plant 2	126174	22.50
01-4774	CARD SERVICES - UMB	I-110225 Westerman	501 4411.01-5302.00	Registration :	AST Permit - Plant 3	126174	22.50
01-4774	CARD SERVICES - UMB	I-110225 Westerman	501 4411.01-5206.00	Parcel Delive:	UPS - Shipping	126174	41.40
01-4774	CARD SERVICES - UMB	I-110225 Westerman	501 4411.01-6705.00	Machinery and:	UPS - Shipping	126174	41.40
01-4774	CARD SERVICES - UMB	I-110225 Westerman	501 4411.01-6705.00	Machinery and:	Pressure Switch	126174	145.86
01-4774	CARD SERVICES - UMB	I-110225 Westerman	501 4411.01-6599.00	Miscellaneous:	Gas - Truck #579	126174	83.23
01-4774	CARD SERVICES - UMB	I-110225 Westerman	501 4411.01-6599.00	Miscellaneous:	Gas - Truck #579	126174	86.90
01-4774	CARD SERVICES - UMB	I-110225 Westerman	501 4411.01-6536.00	Janitorial & :	Disinfectant Wipes	126174	58.06
01-4774	CARD SERVICES - UMB	I-110225-Mitchell	501 4411.01-6102.00	Computer Supp:	Adobe	126174	24.42
						VENDOR 01-4774 TOTALS	1,252.32
01-5226	SOUTHWESTERN POWER ADM	I-26-070	501 4411.03-6556.00	Purchased Pow:	Hydro-/Demand Power	000590	7,743.34
						VENDOR 01-5226 TOTALS	7,743.34
01-5257	LAKELAND OFFICE SYSTEM	I-IN683560	501 4411.01-4312.00	R&M:Office Eq:	Monthly Service Agre	126246	56.01
						VENDOR 01-5257 TOTALS	56.01

11/19/2025 9:41 AM
VENDOR SET: 01 CITY OF CHANUTE
FUND : 501 ELECTRIC UTILITY
DEPARTMENT: 411 ELECTRIC PRODUCTION
INVOICE DATE RANGE: 1/01/1998 THRU 99/99/9999
PAY DATE RANGE: 11/14/2025 THRU 11/19/2025
BUDGET TO USE: CB-CURRENT BUDGET

REGULAR DEPARTMENT PAYMENT REPORT

VENDOR	NAME	ITEM #	G/L ACCOUNT	NAME	DESCRIPTION	CHECK #	AMOUNT
01-5272	STI CEMS SERVICES	I-40116	501 4411.01-6705.00	Machinery and:	Valve, Sol 2way	126269	135.52
						VENDOR 01-5272 TOTALS	135.52
01-5523	VIM TECHNOLOGIES INCOR	I-15239	501 4411.01-3299.00	Other Profess:	Support Hrs - Error	126281	1,462.50
						VENDOR 01-5523 TOTALS	1,462.50
01-5553	KMEA - MID- STATES	I-2680-10-25	501 4411.01-6705.00	Machinery and:	PLC Upgrade #10&11 F	126244	32,233.23
						VENDOR 01-5553 TOTALS	32,233.23
01-9002	CITY OF CHANUTE	I-11-25 Pwr Plt	501 4411.01-4101.00	Electric	: Electric	126191	231.85
01-9002	CITY OF CHANUTE	I-11-25 Pwr Plt	501 4411.01-4102.00	Water	: Water	126191	2,130.96
01-9002	CITY OF CHANUTE	I-11-25 Pwr Plt	501 4411.01-4103.00	Natural Gas	: Natural Gas	126191	47.87
01-9002	CITY OF CHANUTE	I-11-25 Pwr Plt	501 4411.01-4104.00	Trash	: Trash	126191	240.98
01-9002	CITY OF CHANUTE	I-11-25 Pwr Plt	501 4411.01-4107.00	Landfill Fees:	Landfill	126191	1.89
01-9002	CITY OF CHANUTE	I-11-25 Pwr Plt	501 4411.01-4105.00	Sewer	: Sewer	126191	423.50
01-9002	CITY OF CHANUTE	I-11-25 Pwr Plt	501 4411.01-5813.00	Taxes - Sales:	Taxes - Sales	126191	12.33
						VENDOR 01-9002 TOTALS	3,089.38
01-9025	CITY OF CHANUTE	I-202511067423	501 4411.03-6558.00	Transmission :	Trans Est 11/06/25	126210	102,801.70
01-9025	CITY OF CHANUTE	I-202511137451	501 4411.03-6558.00	Transmission :	Trans Est 11/13/25	126210	102,801.70
						VENDOR 01-9025 TOTALS	205,603.40
						DEPARTMENT 411 ELECTRIC PRODUCTION TOTAL:	1,409,883.39

11/19/2025 9:41 AM
 VENDOR SET: 01 CITY OF CHANUTE
 FUND : 501 ELECTRIC UTILITY
 DEPARTMENT: 413 ELECTRIC DISTRIBUTION
 INVOICE DATE RANGE: 1/01/1998 THRU 99/99/9999
 PAY DATE RANGE: 11/14/2025 THRU 11/19/2025
 BUDGET TO USE: CB-CURRENT BUDGET

REGULAR DEPARTMENT PAYMENT REPORT

PAGE: 33
 BANK: AP

VENDOR	NAME	ITEM #	G/L ACCOUNT	NAME	DESCRIPTION	CHECK #	AMOUNT
01-0084	CITY OF CHANUTE	I-01-021	110125	501 4413.02-4107.00	Landfill Fees: Elec Dist Landfill	F 126185	384.54
					VENDOR 01-0084	TOTALS	384.54
01-0208	KANSAS ONE CALL SYSTEM	I-5100190		501 4413.02-3299.00	Other Profess: 1/3 Locates	126242	83.35
					VENDOR 01-0208	TOTALS	83.35
01-0261	NEOSHO COUNTY TREASURE	I-#592	2025	501 4413.04-7425.00	Trucks : Tax/Tags #592	126255	14,372.96
					VENDOR 01-0261	TOTALS	14,372.96
01-0715	CLEAN UNIFORM COMPANY	I-22315443		501 4413.02-6507.00	Clothing - Pr: Uniforms - Elec Dist	126215	66.82
01-0715	CLEAN UNIFORM COMPANY	I-22315444		501 4413.04-6507.00	Clothing - Pr: Uniforms - Elec Mete	126215	44.49
					VENDOR 01-0715	TOTALS	111.31
01-3905	FOLEY EQUIPMENT CO.	C-C10527014		501 4413.02-4403.00	Rental/Lease : Credit - Charged Twi	126227	10,529.70
01-3905	FOLEY EQUIPMENT CO.	I-C10527015		501 4413.02-4403.00	Rental/Lease : Loader/Mulcher Renta	126227	10,529.70
					VENDOR 01-3905	TOTALS	0.00
01-4774	CARD SERVICES - UMB	I-110225-Cody		501 4413.02-6514.00	Electrical Su: Marking Flags	126174	281.18
01-4774	CARD SERVICES - UMB	I-110225-Cody		501 4413.04-6705.00	Machinery and: Floor Mats - #592	126174	171.15
					VENDOR 01-4774	TOTALS	452.33
01-5034	SUNBELT SOLOMON SERVIC	I-414296		501 4413.02-6574.00	Transformers : 25 KVA 1-Ph Transfor	126270	17,400.00
					VENDOR 01-5034	TOTALS	17,400.00
01-5283	AMAZON CAPITAL SERVICE	I-1K3Q-L3JD-9LTR		501 4413.04-6539.00	Lamps : LED Christmas Light	126166	212.00
01-5283	AMAZON CAPITAL SERVICE	I-1QVJ-7944-CF6C		501 4413.02-4304.00	R&M:Communica: Privacy Screen/Switc	126166	653.99
					VENDOR 01-5283	TOTALS	865.99
DEPARTMENT 413 ELECTRIC DISTRIBUTION						TOTAL:	33,670.48
VENDOR SET 501 ELECTRIC UTILITY						TOTAL:	1,443,868.95

PAGE: 34

BANK: AP

FUND : 502 WATER UTILITY

DEPARTMENT: 421 WATER SOURCE OF SUPPLY

INVOICE DATE RANGE: 1/01/1998 THRU 99/99/9999

PAY DATE RANGE: 11/14/2025 THRU 11/19/2025

BUDGET TO USE: CB-CURRENT BUDGET

VENDOR	NAME	ITEM #	G/L ACCOUNT	NAME	DESCRIPTION	CHECK #	AMOUNT
01-9004	CITY OF CHANUTE	I-CY6-WTR 110725	502 4421.01-4101.00	Electric	: East River Bridge -	126193	1,573.55
					VENDOR 01-9004	TOTALS	1,573.55

DEPARTMENT 421	WATER SOURCE OF SUPPLY	TOTAL:	1,573.55
----------------	------------------------	--------	----------

11/19/2025 9:41 AM
 VENDOR SET: 01 CITY OF CHANUTE
 FUND : 502 WATER UTILITY
 DEPARTMENT: 422 WATER TREATMENT PLANT
 INVOICE DATE RANGE: 1/01/1998 THRU 99/99/9999
 PAY DATE RANGE: 11/14/2025 THRU 11/19/2025
 BUDGET TO USE: CB-CURRENT BUDGET

REGULAR DEPARTMENT PAYMENT REPORT

PAGE: 35
 BANK: AP

VENDOR	NAME	ITEM #	G/L ACCOUNT	NAME	DESCRIPTION	CHECK #	AMOUNT
01-0084	CITY OF CHANUTE	I-01-206	11012025	502 4422.01-4107.00	Landfill Fees: Landfill Fees	126185	5.00
					VENDOR 01-0084	TOTALS	5.00
01-0089	CLEAVERS FARM SUPPLY	I-2511-753840		502 4422.01-6536.00	Janitorial & : Nozzle/Bags	126216	28.77
					VENDOR 01-0089	TOTALS	28.77
01-0173	IBT INC.	I-30210172		502 4422.01-6705.00	Machinery and: Bearings	126238	297.21
					VENDOR 01-0173	TOTALS	297.21
01-0411	HUGO'S INDUSTRIAL SUPP	I-341391		502 4422.01-6536.00	Janitorial & : TP/Towels	126237	380.65
					VENDOR 01-0411	TOTALS	380.65
01-0715	CLEAN UNIFORM COMPANY	I-22313633		502 4422.01-4409.00	Other Rentals: Uniforms - WTP	126215	42.16
01-0715	CLEAN UNIFORM COMPANY	I-22315446		502 4422.01-4409.00	Other Rentals: Uniforms - WTP	126215	42.16
					VENDOR 01-0715	TOTALS	84.32
01-4774	CARD SERVICES - UMB	I-110225-Litzel		502 4422.01-5702.00	Freight Charg: Shipping	126174	15.85
01-4774	CARD SERVICES - UMB	I-110225-Mitchell		502 4422.01-7403.00	Computer Equi: Adobe	126174	24.42
					VENDOR 01-4774	TOTALS	40.27
01-9004	CITY OF CHANUTE	I-CY6-WTR	110725	502 4422.01-4101.00	Electric : Water Plant - Electr	126193	4,648.56
01-9004	CITY OF CHANUTE	I-CY6-WTR	110725	502 4422.01-4103.00	Natural Gas : Water Plant - Gas	126193	26.87
01-9004	CITY OF CHANUTE	I-CY6-WTR	110725	502 4422.01-4104.00	Trash : Water Plant - Trash	126193	80.28
01-9004	CITY OF CHANUTE	I-CY6-WTR	110725	502 4422.01-4107.00	Landfill Fees: Water Plant - Landfi	126193	0.81
					VENDOR 01-9004	TOTALS	4,756.52
01-9010	CITY OF CHANUTE	I-CY7-WTR	110725	502 4422.01-4101.00	Electric : Water Towers - Elect	126199	207.72
01-9010	CITY OF CHANUTE	I-CY7-WTR	110725	502 4422.01-4103.00	Natural Gas : Water Towers - Gas	126199	204.23
					VENDOR 01-9010	TOTALS	411.95

DEPARTMENT 422 WATER TREATMENT PLANT TOTAL: 6,004.69

PAGE: 36
BANK: AP

VENDOR	NAME	ITEM #	G/L ACCOUNT	NAME	DESCRIPTION	CHECK #	AMOUNT
01-0089	CLEAVERS FARM SUPPLY	I-2511-751366	502 4423.01-6599.00	Miscellaneous:	Keys	126216	3.58
					VENDOR 01-0089 TOTALS		3.58
01-0131	FASTENAL COMPANY	I-KSCHA4575	502 4423.01-6578.00	Water Supplie:	Screws/Nuts	126224	83.70
					VENDOR 01-0131 TOTALS		83.70
01-0208	KANSAS ONE CALL SYSTEM	I-S100190	502 4423.01-3299.00	Other Profess:	1/3 Locates	126242	83.34
					VENDOR 01-0208 TOTALS		83.34
01-0657	LOCKE SUPPLY COMPANY	I-56911578-00	502 4423.01-6565.00	Small Tools &:	Cutter	126249	34.79
					VENDOR 01-0657 TOTALS		34.79
01-0715	CLEAN UNIFORM COMPANY	I-22313627	502 4423.01-4409.00	Other Rentals:	Uniforms - Water	126215	26.45
01-0715	CLEAN UNIFORM COMPANY	I-22315440	502 4423.01-4409.00	Other Rentals:	Uniforms - Water	126215	26.45
					VENDOR 01-0715 TOTALS		52.90
01-0834	RAVIN PRINTING	I-60558	502 4423.01-3299.00	Other Profess:	Lead and Copper Mail	126263	1,244.15
01-0834	RAVIN PRINTING	I-60559	502 4423.01-3299.00	Other Profess:	Lead and Copper Mail	126263	1,645.00
					VENDOR 01-0834 TOTALS		2,889.15
01-3287	CORE & MAIN LP	C-Y014436	502 4423.01-6578.00	Water Supplie:	Credit	126220	1,200.69-
01-3287	CORE & MAIN LP	I-X686279	502 4423.01-6578.00	Water Supplie:	Fire hydrant repair	126220	2,832.40
					VENDOR 01-3287 TOTALS		1,631.71
				DEPARTMENT 423	WATER TRANSMISSION/DISTR	TOTAL:	4,779.17
				VENDOR SET 502	WATER UTILITY	TOTAL:	12,357.41

11/19/2025 9:41 AM

REGULAR DEPARTMENT PAYMENT REPORT

PAGE: 37

VENDOR SET: 01 CITY OF CHANUTE

BANK: AP

FUND : 503 GAS UTILITY

DEPARTMENT: N/A NON-DEPARTMENTAL

INVOICE DATE RANGE: 1/01/1998 THRU 99/99/9999

PAY DATE RANGE: 11/14/2025 THRU 11/19/2025

BUDGET TO USE: CB-CURRENT BUDGET

VENDOR	NAME	ITEM #	G/L ACCOUNT	NAME	DESCRIPTION	CHECK #	AMOUNT
01-0086	CITY OF CHANUTE	I-01568141	503 3000.00-7101.00	Residential S:	1215 N Kansas Gas Cr	126186	10.30
						VENDOR 01-0086 TOTALS	10.30
				DEPARTMENT	NON-DEPARTMENTAL	TOTAL:	10.30

PAGE: 38
BANK: AP

DEPARTMENT 431	GAS SUPPLY	TOTAL:	436,158.98
----------------	------------	--------	------------

11/19/2025 9:41 AM
 VENDOR SET: 01 CITY OF CHANUTE
 FUND : 503 GAS UTILITY
 DEPARTMENT: 432 GAS STORAGE
 INVOICE DATE RANGE: 1/01/1998 THRU 99/99/9999
 PAY DATE RANGE: 11/14/2025 THRU 11/19/2025
 BUDGET TO USE: CB-CURRENT BUDGET

REGULAR DEPARTMENT PAYMENT REPORT

PAGE: 39
 BANK: AP

VENDOR	NAME	ITEM #	G/L ACCOUNT	NAME	DESCRIPTION	CHECK #	AMOUNT
01-3500	CONSTELLATION NEW ENER	I-4443626	503 4432.00-5706.00	Transportatio	Trans (Gas Dept) 41%	000588	63,124.88
01-3500	CONSTELLATION NEW ENER	I-4443626	503 4432.00-5706.00	Transportatio	Storage (Gas Dept)	000588	15,042.13
						VENDOR 01-3500 TOTALS	78,167.01
						DEPARTMENT 432 GAS STORAGE TOTAL:	78,167.01

11/19/2025 9:41 AM
VENDOR SET: 01 CITY OF CHANUTE
FUND : 503 GAS UTILITY
DEPARTMENT: 434 GAS DISTRIBUTION
INVOICE DATE RANGE: 1/01/1998 THRU 99/99/9999
PAY DATE RANGE: 11/14/2025 THRU 11/19/2025
BUDGET TO USE: CB-CURRENT BUDGET

REGULAR DEPARTMENT PAYMENT REPORT

VENDOR	NAME	ITEM #	G/L ACCOUNT	NAME	DESCRIPTION	CHECK #	AMOUNT
01-0059	CAROLINA MOLDINGS, INC	I-24001	503 4434.02-6544.00	Meters and Su:	Seals	126177	456.86
VENDOR 01-0059 TOTALS							456.86
01-0080	CHANUTE TRIBUNE	I-10312025	503 4434.02-5401.00	Advertising :	Dig Safe, Carbon, Sm	126181	240.63
VENDOR 01-0080 TOTALS							240.63
01-0084	CITY OF CHANUTE	I-01-028 11012025	503 4434.02-4107.00	Landfill Fees:	Landfill Fees	126185	10.00
01-0084	CITY OF CHANUTE	I-01-028 11012025	503 4434.02-6599.00	Miscellaneous:	Bulk Water	126185	3.50
VENDOR 01-0084 TOTALS							13.50
01-0089	CLEAVERS FARM SUPPLY	I-2510-750427	503 4434.02-4309.00	R&M:Maintenan:	Metal for Shed	126216	2,047.86
VENDOR 01-0089 TOTALS							2,047.86
01-0131	FASTENAL COMPANY	I-KSCHA124278	503 4434.02-6565.00	Small Tools &:	Cutter Wheels	126224	210.04
VENDOR 01-0131 TOTALS							210.04
01-0208	KANSAS ONE CALL SYSTEM	I-5100190	503 4434.02-3299.00	Other Profess:	1/3 Locates	126242	83.35
VENDOR 01-0208 TOTALS							83.35
01-0269	OIL PATCH PUMP & SUPPL	I-1011493	503 4434.02-6525.00	Fittings :	Reducer/Bushing	126258	40.52
01-0269	OIL PATCH PUMP & SUPPL	I-1012102	503 4434.02-6544.00	Meters and Su:	Gasket Flange	126258	3.49
VENDOR 01-0269 TOTALS							44.01
01-0715	CLEAN UNIFORM COMPANY	I-22313626	503 4434.02-6507.00	Clothing - Pr:	Uniforms - Gas	126215	118.31
01-0715	CLEAN UNIFORM COMPANY	I-22315439	503 4434.02-6507.00	Clothing - Pr:	Uniforms - Gas	126215	118.30
VENDOR 01-0715 TOTALS							236.61
01-4774	CARD SERVICES - UMB	I-110225-Mitchell	503 4434.02-6548.00	Painting Supp:	Adobe	126174	24.42
01-4774	CARD SERVICES - UMB	I-110225-Sigler	503 4434.02-6101.00	Office Suppli:	Markers	126174	22.54
01-4774	CARD SERVICES - UMB	I-110225-Sigler	503 4434.02-6548.00	Painting Supp:	Marking Paint	126174	196.80

11/19/2025 9:41 AM
 VENDOR SET: 01 CITY OF CHANUTE
 FUND : 503 GAS UTILITY
 DEPARTMENT: 434 GAS DISTRIBUTION
 INVOICE DATE RANGE: 1/01/1998 THRU 99/99/9999
 PAY DATE RANGE: 11/14/2025 THRU 11/19/2025
 BUDGET TO USE: CB-CURRENT BUDGET

REGULAR DEPARTMENT PAYMENT REPORT

PAGE: 41
 BANK: AP

VENDOR	NAME	ITEM #	G/L ACCOUNT	NAME	DESCRIPTION	CHECK #	AMOUNT
01-4774	CARD SERVICES - UMB	I-110225-Sigler	503 4434.02-5719.00	Other Travel	: Lunch - Sigler	126174	11.70
01-4774	CARD SERVICES - UMB	I-110225-Sigler	503 4434.02-4316.00	R&M:Tools	: Methane Sensor	126174	365.84
01-4774	CARD SERVICES - UMB	I-110225-Sigler	503 4434.02-7403.00	Computer Equi:	Adobe Sub	126174	38.31
				VENDOR 01-4774	TOTALS		659.61
01-5290	UTILITY SAFETY AND DES	I-IN20255844	503 4434.02-3214.00	Engineering S:	Retainer Fees	126280	225.00
				VENDOR 01-5290	TOTALS		225.00
01-9022	CITY OF CHANUTE	I-CY7-GAS 110725	503 4434.02-4101.00	Electric	: Electric for Gas loc	126207	78.70
				VENDOR 01-9022	TOTALS		78.70
				DEPARTMENT 434	GAS DISTRIBUTION	TOTAL:	4,296.17
				VENDOR SET 503	GAS UTILITY	TOTAL:	518,632.46

VENDOR	NAME	ITEM #	G/L ACCOUNT	NAME	DESCRIPTION	CHECK #	AMOUNT
01-0715	CLEAN UNIFORM COMPANY	I-22313632	504 4441.00-4409.00	Other Rentals:	Uniforms - Sanitatio	126215	35.90
01-0715	CLEAN UNIFORM COMPANY	I-22315445	504 4441.00-4409.00	Other Rentals:	Uniforms - Sanitatio	126215	35.90
						VENDOR 01-0715	TOTALS
							71.80

DEPARTMENT 441	REFUSE UTILITY DEPARTMENT	TOTAL:	71.80
----------------	---------------------------	--------	-------

11/19/2025 9:41 AM
 VENDOR SET: 01 CITY OF CHANUTE
 FUND : 504 REFUSE UTILITY
 DEPARTMENT: 442 REFUSE LANDFILL
 INVOICE DATE RANGE: 1/01/1998 THRU 99/99/9999
 PAY DATE RANGE: 11/14/2025 THRU 11/19/2025
 BUDGET TO USE: CB-CURRENT BUDGET

REGULAR DEPARTMENT PAYMENT REPORT

PAGE: 43
 BANK: AP

VENDOR	NAME	ITEM #	G/L ACCOUNT	NAME	DESCRIPTION	CHECK #	AMOUNT
01-0089	CLEAVERS FARM SUPPLY	I-2511-751462	504 4442.00-6702.00	Cleaning Mate:	Vacuum	126216	125.99
01-0089	CLEAVERS FARM SUPPLY	I-2511-752625	504 4442.00-6699.00	Misc Building:	Valve/Nipple	126216	24.82
01-0089	CLEAVERS FARM SUPPLY	I-2511-752917	504 4442.00-6599.00	Miscellaneous:	Batteries/Coupling	126216	28.78
						VENDOR 01-0089 TOTALS	179.59
01-0411	HUGO'S INDUSTRIAL SUPP	I-340560	504 4442.00-6702.00	Cleaning Mate:	Toilet Paper	126237	99.97
01-0411	HUGO'S INDUSTRIAL SUPP	I-342247	504 4442.00-6101.00	Office Suppli:	Office Supplies	126237	214.47
						VENDOR 01-0411 TOTALS	314.44
01-0715	CLEAN UNIFORM COMPANY	I-22313632	504 4442.00-4409.00	Other Rentals:	Uniforms - Landfill	126215	10.60
01-0715	CLEAN UNIFORM COMPANY	I-22315445	504 4442.00-4409.00	Other Rentals:	Uniforms - Landfill	126215	16.16
						VENDOR 01-0715 TOTALS	26.76
01-1386	CARDINAL SCALE MFG. CO	I-so793291	504 4442.00-7403.00	Computer Equi:	Software Service Agr	126176	830.00
						VENDOR 01-1386 TOTALS	830.00
01-3905	FOLEY EQUIPMENT CO.	I-3137767	504 4442.00-6705.00	Machinery and:	Labor #76	126227	6,623.21
01-3905	FOLEY EQUIPMENT CO.	I-PS210142898	504 4442.00-6705.00	Machinery and:	Hose	126227	129.56
01-3905	FOLEY EQUIPMENT CO.	I-PS210142953	504 4442.00-6705.00	Machinery and:	Hose	126227	140.62
						VENDOR 01-3905 TOTALS	6,893.39
01-5283	AMAZON CAPITAL SERVICE	I-1LD1-KH7D-631K	504 4442.00-6101.00	Office Suppli:	Toner	126166	44.52
						VENDOR 01-5283 TOTALS	44.52
01-5570	FMS NORTH AMERICA INC	I-3414	504 4442.00-4318.00	R&M:Utility O:	Tire Recycler	126226	1,013.70
01-5570	FMS NORTH AMERICA INC	I-3415	504 4442.00-4318.00	R&M:Utility O:	Tire Recycler	126226	661.85
						VENDOR 01-5570 TOTALS	1,675.55
01-9023	CITY OF CHANUTE	I-CY7-LNDFIL 110725	504 4442.00-4102.00	Water	: Landfill - Water	126208	45.84
01-9023	CITY OF CHANUTE	I-CY7-LNDFIL 110725	504 4442.00-4105.00	Sewer	: Landfill - Sewer	126208	38.82
01-9023	CITY OF CHANUTE	I-CY7-LNDFIL 110725	504 4442.00-4101.00	Electric	: Landfill - Electric	126208	1,866.06
						VENDOR 01-9023 TOTALS	1,950.72
						DEPARTMENT 442 REFUSE LANDFILL TOTAL:	11,914.97

PAGE: 44
BANK: AP

VENDOR	NAME	ITEM #	G/L ACCOUNT	NAME	DESCRIPTION	CHECK #	AMOUNT
01-5323	BLACKSTONE ENVIROMENTA	I-13843	504 4444.00-3214.00	Engineering S:	Groundwater Monitori	126171	2,390.00
				VENDOR 01-5323	TOTALS		2,390.00
				DEPARTMENT 444	REFUSE ADMIN/GENERAL	TOTAL:	2,390.00
				VENDOR SET 504	REFUSE UTILITY	TOTAL:	14,376.77

11/19/2025 9:41 AM

REGULAR DEPARTMENT PAYMENT REPORT

PAGE: 45

VENDOR SET: 01 CITY OF CHANUTE

BANK: AP

FUND : 505 SEWER UTILITY

DEPARTMENT: 451 SEWER COLLECTION

INVOICE DATE RANGE: 1/01/1998 THRU 99/99/9999

PAY DATE RANGE: 11/14/2025 THRU 11/19/2025

BUDGET TO USE: CB-CURRENT BUDGET

VENDOR	NAME	ITEM #	G/L ACCOUNT	NAME	DESCRIPTION	CHECK #	AMOUNT
01-0715	CLEAN UNIFORM COMPANY	I-22313627	505 4451.01-4409.00	Other Rentals:	Uniforms - WWC	126215	15.78
01-0715	CLEAN UNIFORM COMPANY	I-22315440	505 4451.01-4409.00	Other Rentals:	Uniforms - WWC	126215	15.78
						VENDOR 01-0715 TOTALS	31.56
DEPARTMENT 451 SEWER COLLECTION						TOTAL:	31.56

PAGE: 46
BANK: AP

VENDOR	NAME	ITEM #	G/L ACCOUNT	NAME	DESCRIPTION	CHECK #	AMOUNT
01-9001	CITY OF CHANUTE	I-CY6-COMPLX 110725	505 4452.01-4103.00	Natural Gas	: Sewer Lifts - Gas	126190	20.00
01-9001	CITY OF CHANUTE	I-CY6-COMPLX 110725	505 4452.01-4101.00	Electric	: Sewer Lifts - Electr	126190	674.92
						VENDOR 01-9001 TOTALS	694.92

DEPARTMENT 452	SEWER PUMPING	TOTAL:	694.92
----------------	---------------	--------	--------

11/19/2025 9:41 AM
 VENDOR SET: 01 CITY OF CHANUTE
 FUND : 505 SEWER UTILITY
 DEPARTMENT: 453 SEWER TREATMENT/DISPOSAL
 INVOICE DATE RANGE: 1/01/1998 THRU 99/99/9999
 PAY DATE RANGE: 11/14/2025 THRU 11/19/2025
 BUDGET TO USE: CB-CURRENT BUDGET

REGULAR DEPARTMENT PAYMENT REPORT

PAGE: 47
 BANK: AP

VENDOR	NAME	ITEM #	G/L ACCOUNT	NAME	DESCRIPTION	CHECK #	AMOUNT
01-0411	HUGO'S INDUSTRIAL SUPP	I-342552	505 4453.01-6536.00	Janitorial & : TP/Trash Bags/Wipers	126237	281.62	
						VENDOR 01-0411 TOTALS	281.62
01-0715	CLEAN UNIFORM COMPANY	I-22313634	505 4453.01-4409.00	Other Rentals: Uniforms - WWTP	126215	50.82	
01-0715	CLEAN UNIFORM COMPANY	I-22315447	505 4453.01-4409.00	Other Rentals: Uniforms - WWTP	126215	50.82	
						VENDOR 01-0715 TOTALS	101.64
01-5746	MERIDIAN ANALYTICAL LA	I-W5004492	505 4453.01-3217.00	Laboratory Se: Lab Testing Weekly	126252	325.00	
01-5746	MERIDIAN ANALYTICAL LA	I-W5004643	505 4453.01-3217.00	Laboratory Se: Lab Testing Weekly	126252	325.00	
						VENDOR 01-5746 TOTALS	650.00
01-9005	CITY OF CHANUTE	I-CY6-WWT 110725	505 4453.01-4101.00	Electric : Waste Water - Electr	126194	7,762.33	
01-9005	CITY OF CHANUTE	I-CY6-WWT 110725	505 4453.01-4102.00	Water : Waste Water - Water	126194	385.04	
01-9005	CITY OF CHANUTE	I-CY6-WWT 110725	505 4453.01-4103.00	Natural Gas : Waste Water - Gas	126194	633.53	
01-9005	CITY OF CHANUTE	I-CY6-WWT 110725	505 4453.01-4104.00	Trash : Waste Water - Trash	126194	244.26	
01-9005	CITY OF CHANUTE	I-CY6-WWT 110725	505 4453.01-4107.00	Landfill Fees: Waste Water - Landfi	126194	1.62	
						VENDOR 01-9005 TOTALS	9,026.78
DEPARTMENT 453 SEWER TREATMENT/DISPOSAL TOTAL:							10,060.04
VENDOR SET 505 SEWER UTILITY TOTAL:							10,786.52

11/19/2025 9:41 AM
VENDOR SET: 01 CITY OF CHANUTE
FUND : 506 FIBER/COMMUNICATION
DEPARTMENT: 415 FIBER COMMUNICATIONS
INVOICE DATE RANGE: 1/01/1998 THRU 99/99/9999
PAY DATE RANGE: 11/14/2025 THRU 11/19/2025
BUDGET TO USE: CB-CURRENT BUDGET

REGULAR DEPARTMENT PAYMENT REPORT

VENDOR	NAME	ITEM #	G/L ACCOUNT	NAME	DESCRIPTION	CHECK #	AMOUNT
01-0715	CLEAN UNIFORM COMPANY	I-22315443	506 4415.00-6507.00	Clothing - Pr:	Uniforms - Fiber	126215	22.37
						VENDOR 01-0715 TOTALS	22.37
01-4468	COX BUSINESS	I-10292025	506 4415.00-5211.00	Telephone Ser:	Optical Internet	126221	3,470.00
						VENDOR 01-4468 TOTALS	3,470.00
01-4774	CARD SERVICES - UMB	I-110225-Cody	506 4415.00-6701.00	Building Main:	Heater - Fiber Shop	126174	1,964.21
01-4774	CARD SERVICES - UMB	I-110225-Stogsdill	506 4415.00-4304.00	R&M:Communica:	UPS Replacement	126174	60.23
01-4774	CARD SERVICES - UMB	I-110225-Stogsdill	506 4415.00-6599.00	Miscellaneous:	Lunch Meeting	126174	53.35
01-4774	CARD SERVICES - UMB	I-110225-Stogsdill	506 4415.00-3399.00	Other Contrac:	QR Code for Door Han	126174	119.88
01-4774	CARD SERVICES - UMB	I-110225-Stogsdill	506 4415.00-4304.00	R&M:Communica:	90S Fusion Splicer P	126174	251.85
						VENDOR 01-4774 TOTALS	2,449.52
01-5283	AMAZON CAPITAL SERVICE	I-1HQM-3VC9-397D	506 4415.00-6552.00	Pipe	: Y Couplers	126166	55.74
						VENDOR 01-5283 TOTALS	55.74
01-5661	LEVEL 3 COMMUNICATIONS	I-760066832	506 4415.00-5211.00	Telephone Ser:	Internet	126248	6,559.40
						VENDOR 01-5661 TOTALS	6,559.40
01-9020	CITY OF CHANUTE	I-CY7-FIBER 110725	506 4415.00-4101.00	Electric	: Elec for Fiber Locat	126205	298.26
						VENDOR 01-9020 TOTALS	298.26
						DEPARTMENT 415 FIBER COMMUNICATIONS TOTAL:	12,855.29
						VENDOR SET 506 FIBER/COMMUNICATION TOTAL:	12,855.29

11/19/2025 9:41 AM

REGULAR DEPARTMENT PAYMENT REPORT

PAGE: 49

VENDOR SET: 01 CITY OF CHANUTE

BANK: AP

FUND : 511 ELC/WTR/GAS BOND/INTEREST

DEPARTMENT: 713 PAYING AGENT FEE/POSTAGE

INVOICE DATE RANGE: 1/01/1998 THRU 99/99/9999

PAY DATE RANGE: 11/14/2025 THRU 11/19/2025

BUDGET TO USE: CB-CURRENT BUDGET

VENDOR	NAME	ITEM #	G/L ACCOUNT	NAME	DESCRIPTION	CHECK #	AMOUNT
01-3371	UMB BANK N.A.	I-1028596	511 4713.16-9103.00	2024-A Fees	: Paying Agent Fees	126276	500.00
01-3371	UMB BANK N.A.	I-1028601	511 4713.16-9103.00	2024-A Fees	: Paying Agent Fees	126276	318.00
						VENDOR 01-3371 TOTALS	818.00

DEPARTMENT 713 PAYING AGENT FEE/POSTAGE TOTAL: 818.00

VENDOR SET 511 ELC/WTR/GAS BOND/INTERESTTOTAL: 818.00

VENDOR	NAME	ITEM #	G/L ACCOUNT	NAME	DESCRIPTION	CHECK #	AMOUNT
01-0359	ZIMMERMAN ELECTRIC	I-47623	534 4901.02-6578.00	Water Supplie: Pump Repair #1		126283	2,401.50
	PROJ: 520-2024-001	WATER PROJECTS		Water Treatment Plant Upgrade			
01-0359	ZIMMERMAN ELECTRIC	I-47633	534 4901.02-6578.00	Water Supplie: Pump #2 Repair		126283	2,381.50
	PROJ: 520-2024-001	WATER PROJECTS		Water Treatment Plant Upgrade			
				VENDOR 01-0359	TOTALS		4,783.00
01-3287	CORE & MAIN LP	I-X563644	534 4901.02-6578.00	Water Supplie: Gate Valve		126220	11,425.40
	PROJ: 520-2024-001	WATER PROJECTS		Water Treatment Plant Upgrade			
				VENDOR 01-3287	TOTALS		11,425.40
				DEPARTMENT 901	WATER PLANT PROJECT-2021 TOTAL:		16,208.40
				VENDOR SET 534	WATER PLANT PROJECT 2021 TOTAL:		16,208.40

11/19/2025 9:41 AM

REGULAR DEPARTMENT PAYMENT REPORT

PAGE: 51

VENDOR SET: 01 CITY OF CHANUTE

BANK: AP

FUND : 601 VEHICLE SERVICES

DEPARTMENT: 811 VEHICLE SERVICES SHOP

INVOICE DATE RANGE: 1/01/1998 THRU 99/99/9999

PAY DATE RANGE: 11/14/2025 THRU 11/19/2025

BUDGET TO USE: CB-CURRENT BUDGET

VENDOR	NAME	ITEM #	G/L ACCOUNT	NAME	DESCRIPTION	CHECK #	AMOUNT
01-0089	CLEAVERS FARM SUPPLY	I-2510-737902	601 4811.00-6705.00	Machinery and:	Plug/Cord #820	126216	100.98
01-0089	CLEAVERS FARM SUPPLY	I-2510-738471	601 4811.00-6705.00	Machinery and:	Wire/Box/Light #820	126216	49.78
01-0089	CLEAVERS FARM SUPPLY	I-2510-742572	601 4811.00-6705.00	Machinery and:	Bushings #522	126216	12.39
01-0089	CLEAVERS FARM SUPPLY	I-2511-755950	601 4811.00-4329.00	R&M:Other Mac:	Bolts/Elbow	126216	21.89
						VENDOR 01-0089 TOTALS	185.04
01-0268	O'REILLY AUTOMOTIVE ST	C-0136-381323	601 4811.00-6707.00	Motor Vehicle:	Return #553	126257	100.17
01-0268	O'REILLY AUTOMOTIVE ST	I-0136-375042	601 4811.00-6707.00	Motor Vehicle:	Filters	126257	13.23
01-0268	O'REILLY AUTOMOTIVE ST	I-0136-375795	601 4811.00-6707.00	Motor Vehicle:	Inj #392	126257	72.19
01-0268	O'REILLY AUTOMOTIVE ST	I-0136-375828	601 4811.00-6707.00	Motor Vehicle:	Fan Motor #372	126257	32.06
01-0268	O'REILLY AUTOMOTIVE ST	I-0136-375960	601 4811.00-6707.00	Motor Vehicle:	Fan Assy/Motor #372	126257	350.51
01-0268	O'REILLY AUTOMOTIVE ST	I-0136-375993	601 4811.00-6707.00	Motor Vehicle:	Pres. Switch #195	126257	44.62
01-0268	O'REILLY AUTOMOTIVE ST	I-0136-376869	601 4811.00-6705.00	Machinery and:	Connector #820	126257	33.99
01-0268	O'REILLY AUTOMOTIVE ST	I-0136-376940	601 4811.00-6705.00	Machinery and:	Connector #820	126257	57.99
01-0268	O'REILLY AUTOMOTIVE ST	I-0136-377823	601 4811.00-6107.00	Small Items o:	Eraser Wheel	126257	36.08
01-0268	O'REILLY AUTOMOTIVE ST	I-0136-380284	601 4811.00-6707.00	Motor Vehicle:	Starter #357	126257	256.62
01-0268	O'REILLY AUTOMOTIVE ST	I-0136-381152 11-25	601 4811.00-6707.00	Motor Vehicle:	Water Pump #553	126257	222.19
						VENDOR 01-0268 TOTALS	1,019.31
01-0338	UTILITY PETTY CASH	I-1719	601 4811.00-5708.00	Vehicle Licen:	Tag/Title #591	126279	28.75
						VENDOR 01-0338 TOTALS	28.75
01-0447	SHIELDS MOTOR CO., INC	I-144073	601 4811.00-6707.00	Motor Vehicle:	Reservoir #518	126267	122.69
						VENDOR 01-0447 TOTALS	122.69
01-0495	GRAINGER	C-9703059437	601 4811.00-4329.00	R&M:Other Mac:	Return	126234	5,511.59
01-0495	GRAINGER	I-9692345078	601 4811.00-4329.00	R&M:Other Mac:	Pins	126234	30.66
01-0495	GRAINGER	I-9692345094	601 4811.00-4329.00	R&M:Other Mac:	Compressor Kit	126234	298.92
01-0495	GRAINGER	I-9692667398	601 4811.00-4329.00	R&M:Other Mac:	Compressor	126234	5,670.59
01-0495	GRAINGER	I-9694386286	601 4811.00-4329.00	R&M:Other Mac:	Pin	126234	19.07
						VENDOR 01-0495 TOTALS	507.65
01-0715	CLEAN UNIFORM COMPANY	I-22313629	601 4811.00-4409.00	Other Rentals:	Uniforms - Veh Servi	126215	8.13
01-0715	CLEAN UNIFORM COMPANY	I-22315439	601 4811.00-4409.00	Other Rentals:	Shop Towels	126215	21.81
01-0715	CLEAN UNIFORM COMPANY	I-22315442	601 4811.00-4409.00	Other Rentals:	Uniforms - Veh Servi	126215	8.13
						VENDOR 01-0715 TOTALS	38.07

PAGE: 52
BANK: AP

VENDOR	NAME	ITEM #	G/L ACCOUNT	NAME	DESCRIPTION	CHECK #	AMOUNT
01-2196	CHANDLER OIL, LLC	I-136308	601 4811.00-6203.00	Gasoline	: UNL - St, Elec, PP	126179	174.72
01-2196	CHANDLER OIL, LLC	I-136375	601 4811.00-6704.00	Lubricants (G:	5w20	126179	1,435.15
					VENDOR 01-2196	TOTALS	1,609.87
01-2684	BUMPER TO BUMPER	I-1679885	601 4811.00-6572.00	Tools	: Drill Bit	126173	36.76
01-2684	BUMPER TO BUMPER	I-1680779	601 4811.00-6107.00	Small Items o:	Chuck/Nipple	126173	27.15
01-2684	BUMPER TO BUMPER	I-1681054	601 4811.00-6704.00	Lubricants (G:	Oil	126173	51.81
					VENDOR 01-2684	TOTALS	115.72
01-3021	MFA OIL COMPANY	I-13350740	601 4811.00-6201.00	Diesel Fuel	: 800 gals DSL @ Compl	126253	2,371.08
01-3021	MFA OIL COMPANY	I-13350778	601 4811.00-6201.00	Diesel Fuel	: 838 gals DSL @ Compl	126253	2,484.29
					VENDOR 01-3021	TOTALS	4,855.37
01-3905	FOLEY EQUIPMENT CO.	I-PS210142013	601 4811.00-6705.00	Machinery and:	Seal/Adap/Bushing #5	126227	33.31
01-3905	FOLEY EQUIPMENT CO.	I-PS210142776	601 4811.00-4329.00	R&M:Other Mac:	Hose/Coupling	126227	136.24
					VENDOR 01-3905	TOTALS	169.55
01-4005	TRAVELERS	I-6041M7121 11-2025	601 4811.00-5104.00	General Liabi:	Auto Policy	126274	223.00
					VENDOR 01-4005	TOTALS	223.00
01-4226	JOHN DEERE FINANCIAL	I-6728336	601 4811.00-6705.00	Machinery and:	Tie Rod	126239	51.79
					VENDOR 01-4226	TOTALS	51.79
01-4774	CARD SERVICES - UMB	I-110225-Kovacic	601 4811.00-5707.00	Travel Expens:	KC Lunch	126174	82.65
01-4774	CARD SERVICES - UMB	I-110225-Kovacic	601 4811.00-7403.00	Computer Equi:	Software Sub	126174	289.54
					VENDOR 01-4774	TOTALS	372.19
01-5735	EMPORIA KENWORTH	I-04P67152	601 4811.00-6705.00	Machinery and:	Valve	126223	239.02
					VENDOR 01-5735	TOTALS	239.02
				DEPARTMENT 811	VEHICLE SERVICES SHOP	TOTAL:	9,538.02
				VENDOR SET 601	VEHICLESERVICES	TOTAL:	9,538.02

11/19/2025 9:41 AM
 VENDOR SET: 01 CITY OF CHANUTE
 FUND : 602 UTILITY SERVICES
 DEPARTMENT: 821 UTILITY ADMIN SERVICE
 INVOICE DATE RANGE: 1/01/1998 THRU 99/99/9999
 PAY DATE RANGE: 11/14/2025 THRU 11/19/2025
 BUDGET TO USE: CB-CURRENT BUDGET

REGULAR DEPARTMENT PAYMENT REPORT

PAGE: 53
 BANK: AP

VENDOR	NAME	ITEM #	G/L ACCOUNT	NAME	DESCRIPTION	CHECK #	AMOUNT
01-0080	CHANUTE TRIBUNE	I-10312025	602 4821.00-5404.00	Legal Publica:	Qrtly Report Bonds &	126181	241.00
				VENDOR 01-0080	TOTALS		241.00
01-0235	MC CARTY'S OFFICE MACH	I-11285-1	602 4821.00-6107.00	Small Items o:	Adding Machine - Cle	126250	139.35
				VENDOR 01-0235	TOTALS		139.35
01-3630	AT&T	I-11-2025	602 4821.00-5211.00	Telephone Ser:	Phone Directory List	126168	28.00
				VENDOR 01-3630	TOTALS		28.00
01-4762	PITNEY BOWES GLOBAL FI	I-3321566861	602 4821.00-4403.00	Rental/Lease :	Postage Machine	126260	224.19
				VENDOR 01-4762	TOTALS		224.19
01-4774	CARD SERVICES - UMB	I-110225-Mitchell	602 4821.00-7403.00	Computer Equi:	Adobe	126174	73.26
				VENDOR 01-4774	TOTALS		73.26
01-5283	AMAZON CAPITAL SERVICE	I-1LD6-Y4MD-9VVC	602 4821.00-6102.00	Computer Supp:	Toner Cartridges	126166	232.87
01-5283	AMAZON CAPITAL SERVICE	I-1XVL-3GN9-LLVK	602 4821.00-6102.00	Computer Supp:	Scanner Parts	126166	15.99
				VENDOR 01-5283	TOTALS		248.86
01-5809	REDAX EQUIPMENT SOLUTI	I-Bus397-C416-INV1	602 4821.00-4305.00	R&M:Computer :	Maint - Folder & Shr	126264	1,494.50
				VENDOR 01-5809	TOTALS		1,494.50
DEPARTMENT 821 UTILITY ADMIN SERVICE						TOTAL:	2,449.16

VENDOR	NAME	ITEM #	G/L ACCOUNT	NAME	DESCRIPTION	CHECK #	AMOUNT
01-0278	PETTY CASH	I-10448	602 4822.00-5208.00	Postage	: Postage - 4th Ward	126259	494.72
					VENDOR 01-0278	TOTALS	494.72
01-3668	DEB HANSEN	I-03947	602 4822.00-6101.00	Office Suppli:	Bowls/Dog Treats	126235	14.73
					VENDOR 01-3668	TOTALS	14.73
01-4762	PITNEY BOWES GLOBAL FI	I-3321566861	602 4822.00-4403.00	Rental/Lease	: Postage Machine	126260	224.19
					VENDOR 01-4762	TOTALS	224.19
				DEPARTMENT 822	UTILITY BUSINESS OFFICE	TOTAL:	733.64

11/19/2025 9:41 AM
 VENDOR SET: 01 CITY OF CHANUTE
 FUND : 602 UTILITY SERVICES
 DEPARTMENT: 823 DATA PROCESSING
 INVOICE DATE RANGE: 1/01/1998 THRU 99/99/9999
 PAY DATE RANGE: 11/14/2025 THRU 11/19/2025
 BUDGET TO USE: CB-CURRENT BUDGET

REGULAR DEPARTMENT PAYMENT REPORT

PAGE: 55
 BANK: AP

VENDOR	NAME	ITEM #	G/L ACCOUNT	NAME	DESCRIPTION	CHECK #	AMOUNT
01-0088	CLEAVERS FARM & HOME	I-2510-748055	602 4823.00-6699.00	Misc Building:	Clamp	126217	7.84
						VENDOR 01-0088 TOTALS	7.84
01-4774	CARD SERVICES - UMB	I-110225-Mitchell	602 4823.00-3208.00	Computer Serv:	Adobe	126174	73.26
01-4774	CARD SERVICES - UMB	I-110225-Rojas	602 4823.00-3208.00	Computer Serv:	Ticketing	126174	403.15
01-4774	CARD SERVICES - UMB	I-110225-Rojas	602 4823.00-7426.00	Video Equipme:	Camera	126174	76.65
01-4774	CARD SERVICES - UMB	I-110225-Rojas	602 4823.00-7426.00	Video Equipme:	Camera Mount	126174	63.80
01-4774	CARD SERVICES - UMB	I-110225-Rojas	602 4823.00-7403.00	Computer Equi:	Apple Photo Proof	126174	5.46
01-4774	CARD SERVICES - UMB	I-110225-Rojas	602 4823.00-7426.00	Video Equipme:	Pendant Kit	126174	74.61
01-4774	CARD SERVICES - UMB	I-110225-Rojas	602 4823.00-6403.00	Subscriptions:	Subscription Jamf	126174	68.00
01-4774	CARD SERVICES - UMB	I-110225-Rojas	602 4823.00-7403.00	Computer Equi:	Subscription ChatGPT	126174	20.00
01-4774	CARD SERVICES - UMB	I-110225-Rojas	602 4823.00-4305.00	R&M:Computer :	PD Laptop Hard Drive	126174	72.27
01-4774	CARD SERVICES - UMB	I-110225-Rojas	602 4823.00-6102.00	Computer Supp:	Phone Case	126174	19.55
01-4774	CARD SERVICES - UMB	I-110225-Rojas	602 4823.00-5304.00	Training	: Subscription IT Pro	126174	118.00
						VENDOR 01-4774 TOTALS	994.75
01-5257	LAKELAND OFFICE SYSTEM	I-IN685762	602 4823.00-4312.00	R&M:Office Eq:	Copier Maint	126246	132.39
						VENDOR 01-5257 TOTALS	132.39
01-5283	AMAZON CAPITAL SERVICE	I-11K4-XJG3-4JMX	602 4823.00-7414.00	Office Equipm:	Mouse	126166	36.39
01-5283	AMAZON CAPITAL SERVICE	I-11W7-CMQC-WDCP	602 4823.00-6102.00	Computer Supp:	Screen Protectors	126166	8.96
01-5283	AMAZON CAPITAL SERVICE	I-14PL-RFCX-4CQV	602 4823.00-7414.00	Office Equipm:	Rechargeable Battery	126166	18.30
01-5283	AMAZON CAPITAL SERVICE	I-1G3W-JGMX-6W33	602 4823.00-6102.00	Computer Supp:	Adapter/Panel for El	126166	42.98
						VENDOR 01-5283 TOTALS	106.63
01-5819	GOVERNMENT FRAMEWORKS.	I-7073197	602 4823.00-3208.00	Computer Serv:	Laserfiche	126233	10,673.31
						VENDOR 01-5819 TOTALS	10,673.31
						DEPARTMENT 823 DATA PROCESSING TOTAL:	11,914.92
						VENDOR SET 602 UTILITY SERVICES TOTAL:	15,097.72

BANK: AP

VENDOR	NAME	ITEM #	G/L	ACCOUNT	NAME	DESCRIPTION	CHECK #	AMOUNT
01-0089	CLEAVERS FARM SUPPLY	I-2511-752506	603	4831.00-4309.00	R&M:Maintenan	Compressor Parts	126216	77.95
						VENDOR 01-0089	TOTALS	77.95
01-0715	CLEAN UNIFORM COMPANY	I-22315439	603	4831.00-6536.00	Janitorial & :	Mops	126215	7.21
						VENDOR 01-0715	TOTALS	7.21
01-4375	CDL	I-W37001	603	4831.00-4313.00	R&M:Plumbing/:	Repaired Heater	126178	513.12
01-4375	CDL	I-W37003	603	4831.00-4313.00	R&M:Plumbing/:	Fall PM - HVAC Syste	126178	489.43
						VENDOR 01-4375	TOTALS	1,002.55
01-4774	CARD SERVICES - UMB	I-110225-Cody	603	4831.00-6536.00	Janitorial & :	Urinal Screens	126174	66.52
01-4774	CARD SERVICES - UMB	I-110225-Cody	603	4831.00-6536.00	Janitorial & :	Toilet Paper	126174	84.94
						VENDOR 01-4774	TOTALS	151.46
01-9024	CITY OF CHANUTE	I-CY7-CMPLX2 110725	603	4831.00-4103.00	Natural Gas :	Complex - Gas	126209	121.19
01-9024	CITY OF CHANUTE	I-CY7-CMPLX2 110725	603	4831.00-4102.00	Water :	Complex - Water	126209	222.60
01-9024	CITY OF CHANUTE	I-CY7-CMPLX2 110725	603	4831.00-4101.00	Electric :	Complex - Electric	126209	1,458.18
01-9024	CITY OF CHANUTE	I-CY7-CMPLX2 110725	603	4831.00-4105.00	Sewer :	Complex - Sewer	126209	101.09
01-9024	CITY OF CHANUTE	I-CY7-CMPLX2 110725	603	4831.00-4104.00	Trash :	Complex - Trash	126209	374.96
01-9024	CITY OF CHANUTE	I-CY7-CMPLX2 110725	603	4831.00-4107.00	Landfill Fees:	Complex - Landfill	126209	3.24
						VENDOR 01-9024	TOTALS	2,281.26
					DEPARTMENT 831	PUBLIC WORKS/COMPLEX	TOTAL:	3,520.43
					VENDOR SET 603	PUBLIC WORKS & COMPLEX	TOTAL:	3,520.43

11/19/2025 9:41 AM

REGULAR DEPARTMENT PAYMENT REPORT

PAGE: 57

VENDOR SET: 01 CITY OF CHANUTE

BANK: AP

FUND : 712 HEALTH INSURANCE

DEPARTMENT: 710 DEBT SERVICE

INVOICE DATE RANGE: 1/01/1998 THRU 99/99/9999

PAY DATE RANGE: 11/14/2025 THRU 11/19/2025

BUDGET TO USE: CB-CURRENT BUDGET

VENDOR	NAME	ITEM #	G/L ACCOUNT	NAME	DESCRIPTION	CHECK #	AMOUNT
01-4015	BLUE CROSS AND BLUE	I-10-2025	712 4710.00-3299.00	Other Profess:	Quarterly Report	126172	100.00
						VENDOR 01-4015 TOTALS	100.00
DEPARTMENT 710 DEBT SERVICE						TOTAL:	100.00
VENDOR SET 712 HEALTH INSURANCE						TOTAL:	100.00

PAGE: 58

BUDGET TO USE: CB-CURRENT BUDGET

VENDOR	NAME	ITEM #	G/L ACCOUNT	NAME	DESCRIPTION	CHECK #	AMOUNT
01-4503	SOUTHWEST POWER POOL,	I-TRN-20251031-CHAN	730 4411.03-6558.00	Transmission-	Transmission - Iola	000589	163,965.85
01-4503	SOUTHWEST POWER POOL,	I-TRN-20251031-CHAN	730 4411.03-6558.01	Transmission-	Transmission - Sabe	000589	74,504.03
01-4503	SOUTHWEST POWER POOL,	I-TRN-20251031-CHAN	730 4411.03-6558.05	Transmission-	Transmission - Chanu	000589	413,333.55
01-4503	SOUTHWEST POWER POOL,	I-TRN-20251031-CHAN	730 4411.03-6558.02	Transmission-	Transmission - Fredo	000589	45,799.32
01-4503	SOUTHWEST POWER POOL,	I-TRN-20251031-CHAN	730 4411.03-6558.03	Transmission-	Transmission - Centr	000589	6,624.16
01-4503	SOUTHWEST POWER POOL,	I-TRN-20251031-CHAN	730 4411.03-6558.04	Transmission-	Transmission - Arcad	000589	2,350.51
01-4503	SOUTHWEST POWER POOL,	I-TRN-20251031-CHAN	730 4411.03-6558.06	Transmission-	Transmission - Axtel	000589	5,698.21
					VENDOR 01-4503	TOTALS	712,275.63
01-4673	CITY OF IOLA	I-10312025	730 4411.03-3307.00	Interest on S:	SPP Secutiey Deposit	126213	1,987.73
					VENDOR 01-4673	TOTALS	1,987.73
01-4760	CITY OF ARCADIA	I-10312025	730 4411.03-3307.04	Interest on S:	SPP Security Deposit	126182	9.47
					VENDOR 01-4760	TOTALS	9.47
01-4761	CITY OF FREDONIA	I-10312025	730 4411.03-3307.02	Interest on S:	SPP Secutiey Deposit	126212	681.51
					VENDOR 01-4761	TOTALS	681.51
01-4770	CITY OF SABETHA	I-10312025	730 4411.03-3307.01	Interest on S:	SPP Secutiey Deposit	126214	851.88
					VENDOR 01-4770	TOTALS	851.88
01-4771	CITY OF CENTRALIA	I-10312025	730 4411.03-3307.03	Interest on S:	SPP Security Deposit	126184	56.79
					VENDOR 01-4771	TOTALS	56.79
01-5179	CITY OF AXTELL	I-10312025	730 4411.03-3307.05	Interest on S:	SPP Security Deposit	126183	56.79
					VENDOR 01-5179	TOTALS	56.79
DEPARTMENT 411					ELECTRIC PRODUCTION	TOTAL:	715,919.80
VENDOR SET 730					SOUTHWIND ENERGY GROUP	TOTAL:	715,919.80

11/19/2025 9:41 AM

REGULAR DEPARTMENT PAYMENT REPORT

PAGE: 59

VENDOR SET: 01 CITY OF CHANUTE

BANK: AP

FUND : 736 GRANT PROJECTS

DEPARTMENT: 100 FEDERAL GRANTS

INVOICE DATE RANGE: 1/01/1998 THRU 99/99/9999

PAY DATE RANGE: 11/14/2025 THRU 11/19/2025

BUDGET TO USE: CB-CURRENT BUDGET

VENDOR	NAME	ITEM #	G/L ACCOUNT	NAME	DESCRIPTION	CHECK #	AMOUNT
01-5754	SEKMH - ASHLY CLINIC L	I-RHC20240012538	736 4100.00-5808.00	Refunds	: Erate/Internet	126266	778.05
	PROJ: 600-2011-002	FEDERAL GRANTS		E-Rate/Internet Schools			
					VENDOR 01-5754	TOTALS	778.05
					DEPARTMENT 100	FEDERAL GRANTS	TOTAL: 778.05

11/19/2025 9:41 AM
VENDOR SET: 01 CITY OF CHANUTE
FUND : 736 GRANT PROJECTS
DEPARTMENT: 200 STATE GRANTS
INVOICE DATE RANGE: 1/01/1998 THRU 99/99/9999
PAY DATE RANGE: 11/14/2025 THRU 11/19/2025
BUDGET TO USE: CB-CURRENT BUDGET

REGULAR DEPARTMENT PAYMENT REPORT

VENDOR	NAME	ITEM #	G/L ACCOUNT	NAME	DESCRIPTION	CHECK #	AMOUNT
01-5071	GARVER	I-2402221-7	736 4200.00-3299.00	Other Profess:	South Taxiway A Reha	126231	4,986.28
	PROJ: 216-2025-001	AIRPORT		South Taxiway A Rehab			
VENDOR 01-5071						TOTALS	4,986.28
DEPARTMENT 200						STATE GRANTS	TOTAL: 4,986.28
VENDOR SET 736						GRANT PROJECTS	TOTAL: 5,764.33

11/19/2025 9:41 AM

REGULAR DEPARTMENT PAYMENT REPORT

PAGE: 61

VENDOR SET: 01 CITY OF CHANUTE

BANK: AP

FUND : 755 DONATIONS/CONTRIBUTIONS

DEPARTMENT: 221 FIRE

INVOICE DATE RANGE: 1/01/1998 THRU 99/99/9999

PAY DATE RANGE: 11/14/2025 THRU 11/19/2025

BUDGET TO USE: CE-CURRENT BUDGET

VENDOR	NAME	ITEM #	G/L ACCOUNT	NAME	DESCRIPTION	CHECK #	AMOUNT
01-4774	CARD SERVICES - UMB	I-110225-Mitchell	755 4221.00-6599.00	Miscellaneous: First Due Conference	126174	1,141.72	
01-4774	CARD SERVICES - UMB	I-110225-Mitchell	755 4221.00-6599.00	Miscellaneous: Hotel	126174	575.18	
01-4774	CARD SERVICES - UMB	I-110225-Small	755 4221.00-6599.00	Miscellaneous: First Due Conference	126174	1,101.72	
01-4774	CARD SERVICES - UMB	I-110225-Small	755 4221.00-6599.00	Miscellaneous: Sparky Repairs	126174	219.72	
VENDOR 01-4774 TOTALS						3,038.34	
DEPARTMENT 221 FIRE						TOTAL: 3,038.34	
VENDOR SET 755 DONATIONS/CONTRIBUTIONS						TOTAL: 3,038.34	

11/19/2025 9:41 AM
VENDOR SET: 01 CITY OF CHANUTE
FUND : 799 UNENCUMBERED CASH INVEST
DEPARTMENT: N/A NON-DEPARTMENTAL
INVOICE DATE RANGE: 1/01/1998 THRU 99/99/9999
PAY DATE RANGE: 11/14/2025 THRU 11/19/2025
BUDGET TO USE: CB-CURRENT BUDGET

REGULAR DEPARTMENT PAYMENT REPORT

VENDOR	NAME	ITEM #	G/L ACCOUNT	NAME	DESCRIPTION	CHECK #	AMOUNT
01-0086	CITY OF CHANUTE	I-519332102020205	799 3000.00-6101.00	Interest On I:	Security Deposit Int	126188	12,847.02
VENDOR 01-0086						TOTALS	12,847.02
DEPARTMENT				NON-DEPARTMENTAL	TOTAL:	12,847.02	
VENDOR SET 799				UNENCUMBERED CASH INVEST	TOTAL:	12,847.02	
REPORT GRAND TOTAL:						3,281,627.12	