

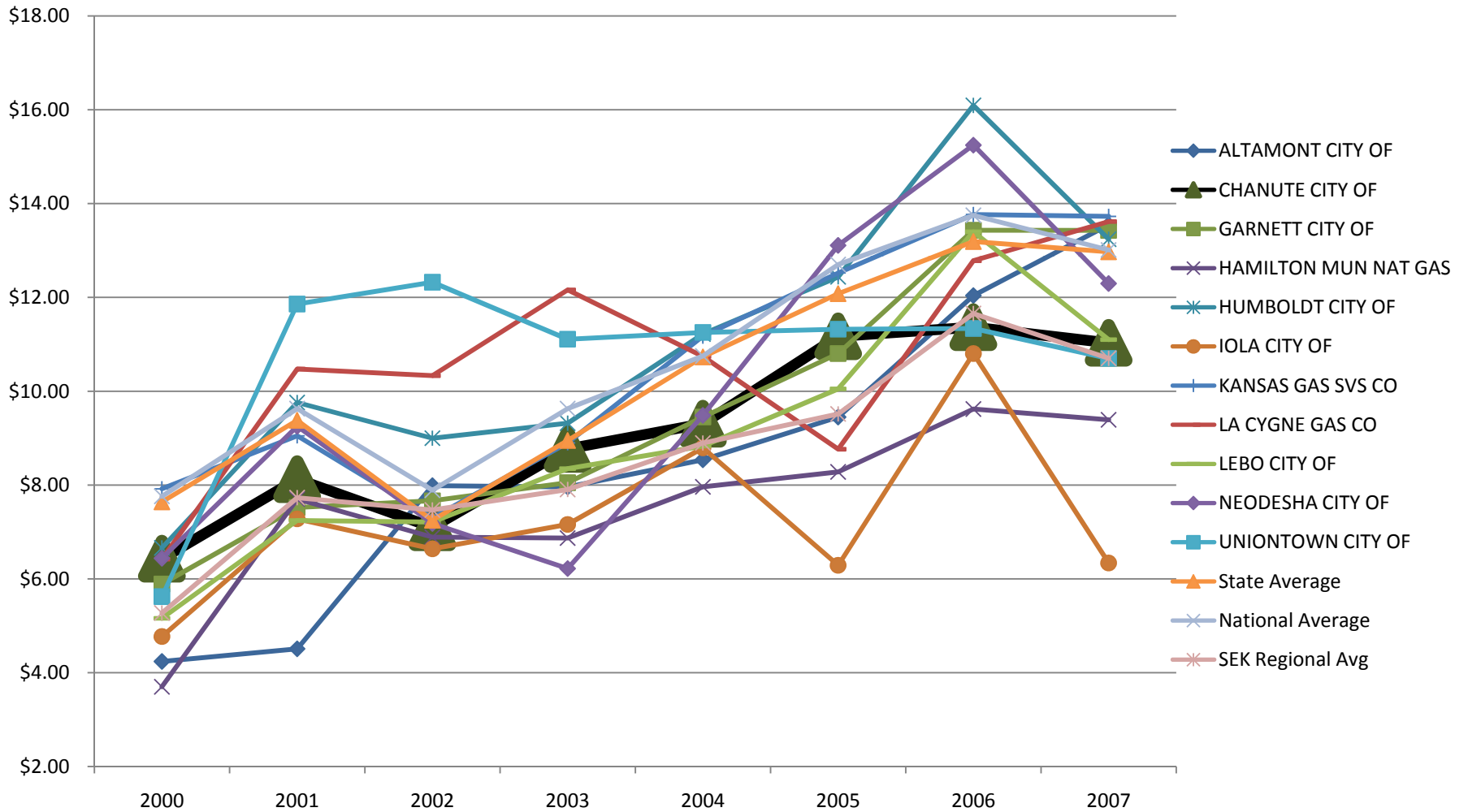
Natural Gas Rate Comparison/History (Residential Only)

This information comes from the Department of Energy – Energy Information Administration based upon the annual reporting that each utility is required to do. The data typically comes in 11 months after the end of a year.

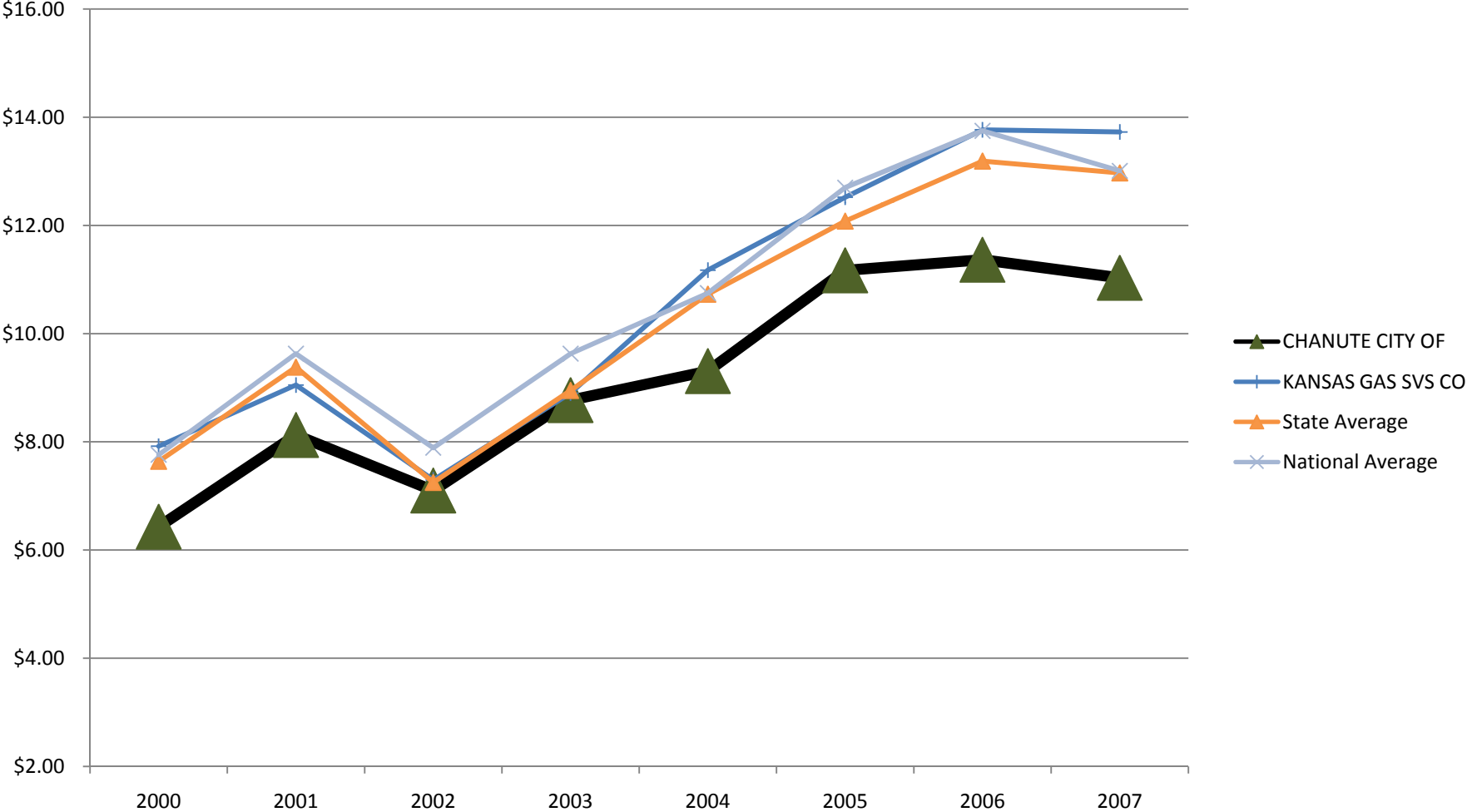
Table w/Price Data

	Year	Year	Year	Year	Year	Year	Year	Year	Year	Year	Year	Connected
	2000	2001	2002	2003	2004	2005	2006	2007	2008	2009		Customers
ALTAMONT CITY OF	\$ 4.24	\$ 4.51	\$ 7.99	\$ 7.96	\$ 8.54	\$ 9.45	\$ 12.04	\$ 13.55				496
CHANUTE CITY OF	\$ 6.43	\$ 8.13	\$ 7.10	\$ 8.77	\$ 9.31	\$ 11.17	\$ 11.37	\$ 11.03				3,920
GARNETT CITY OF	\$ 5.89	\$ 7.52	\$ 7.66	\$ 8.05	\$ 9.45	\$ 10.80	\$ 13.43	\$ 13.43				1,442
HAMILTON MUN NAT GAS	\$ 3.70	\$ 7.70	\$ 6.89	\$ 6.87	\$ 7.96	\$ 8.28	\$ 9.62	\$ 9.39				122
HUMBOLDT CITY OF	\$ 6.66	\$ 9.76	\$ 9.00	\$ 9.32	\$ 11.22	\$ 12.44	\$ 16.09	\$ 13.24				756
IOLA CITY OF	\$ 4.77	\$ 7.28	\$ 6.64	\$ 7.16	\$ 8.79	\$ 6.29	\$ 10.80	\$ 6.34				2,429
KANSAS GAS SVS CO	\$ 7.92	\$ 9.05	\$ 7.30	\$ 8.90	\$ 11.17	\$ 12.52	\$ 13.77	\$ 13.73				582,604
LA CYGNE GAS CO	\$ 6.42	\$ 10.47	\$ 10.33	\$ 12.16	\$ 10.74	\$ 8.76	\$ 12.78	\$ 13.62				436
LEBO CITY OF	\$ 5.16	\$ 7.24	\$ 7.21	\$ 8.35	\$ 8.83	\$ 10.05	\$ 13.40	\$ 11.10				306
NEODESHA CITY OF	\$ 6.44	\$ 9.25	\$ 7.18	\$ 6.22	\$ 9.49	\$ 13.11	\$ 15.25	\$ 12.30				1,174
UNIONTOWN CITY OF	\$ 5.62	\$ 11.86	\$ 12.32	\$ 11.11	\$ 11.25	\$ 11.32	\$ 11.34	\$ 10.70				169
State Average	\$ 7.64	\$ 9.38	\$ 7.25	\$ 8.95	\$ 10.73	\$ 12.08	\$ 13.19	\$ 12.97	\$ 7.73			
National Average	\$ 7.76	\$ 9.63	\$ 7.89	\$ 9.63	\$ 10.75	\$ 12.70	\$ 13.75	\$ 13.01	\$ 9.79			
SEK Regional Avg	\$ 5.27	\$ 7.73	\$ 7.47	\$ 7.91	\$ 8.90	\$ 9.44	\$ 11.66	\$ 10.70	\$ -			

All



Chanute vs State, Regional & National Average



Municipals Only

